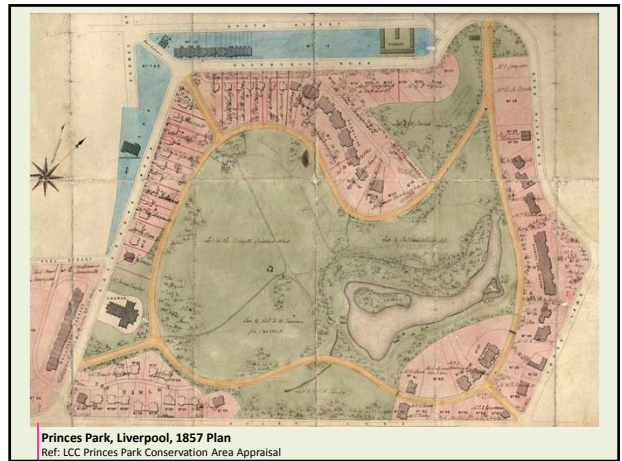




Prince's Park, Grade II\* (1842)  
Liverpool, April 2014



Princes Park, Liverpool, 1857 Plan  
Ref: LCC Princes Park Conservation Area Appraisal



Birkenhead Park, Grade I (1847)  
The Wirral, Merseyside, October 2017



Williamson Park, Grade II (1909)  
Lancaster, April 2016



Queen's Park, Grade II (1846)  
Manchester, March 2015



Stanley Park, Grade II\* (1926)  
Blackpool, April 2016



### Impact on public sector funding after the financial crash

**Local Government Association**

**Funding outlook for councils from 2010/11 to 2019/20:**

Chart 4 Social care and waste spending within the overall funding envelope

www.local.gov.uk

**Funding outlook for councils**  
Local Government Association, June 2012



### The Surveys

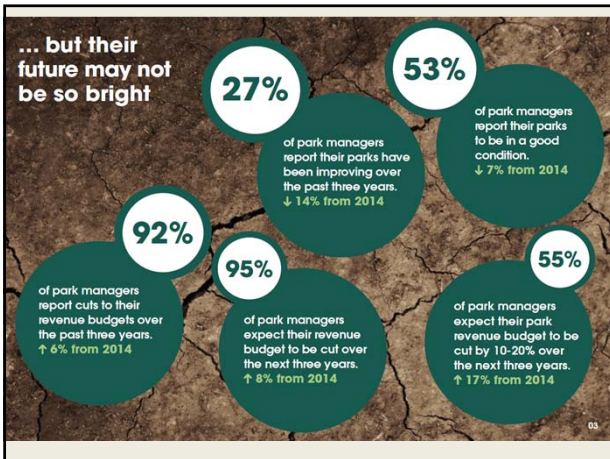
Park Managers 2014

Park Managers 2016

Public Opinions

- Park Managers 193/418 – 46% (35m people)
- Friends Groups 441 responses (436 in 2014)
- Public Opinion Survey 2,130 adults (16+)

<https://www.hlf.org.uk/state-uk-public-parks-2016>  
<https://www.hlf.org.uk/state-uk-public-parks-2014>



### The Main Findings

**1** People use their parks regularly and visitor numbers are increasing

**2** Park maintenance budgets continue to fall

**8** Communities are doing more for their parks

1. People using their parks more regularly
2. Park maintenance budgets continue to fall
3. Staff and skills are being lost
4. Quality of parks is expected to decline
5. Increasing national inequality
6. Management becoming much more varied
7. Sources of external income are on the rise
8. Communities are doing more
9. Park trusts are performing better
10. Council commitment makes a difference

### Regular and Increasing Use of Parks

**1** People use their parks regularly and visitor numbers are increasing

How frequently, if at all, do you typically use, visit, or pass through your local park? (n=2,130)	All Public %	Age 15-17	Age 18-24	Age 25-34	Age 35-44	Age 45-54	Age 55-64	Age 65+
Almost every day	11%	12%	13%	14%	11%	11%	11%	8%
At least once a week	24%	44%	27%	32%	26%	19%	19%	19%
About once a month	22%	18%	29%	25%	21%	20%	21%	17%
Within the last 6 months	12%	13%	12%	10%	12%	12%	12%	12%
Within the last year	7%	6%	6%	4%	6%	8%	7%	10%
Longer ago	10%	11%	6%	4%	7%	12%	13%	16%
Never	12%	7%	4%	6%	11%	14%	15%	16%
Don't know	3%	3%	4%	4%	3%	3%	2%	2%

**Table 4.5** Frequency of total parks visits and the distribution across different age groups

How frequently, if at all, do you typically use, visit, or pass through your local park? (n=2,130)	All Public %	Children aged Under 5	Children aged 5-10	Children aged 11-15	Urban	Sub-Urban	Rural
Almost every day	11%	17%	20%	12%	12%	10%	10%
At least once a week	24%	36%	32%	30%	25%	24%	22%
About once a month	22%	35%	29%	23%	24%	21%	19%
Within the last 6 months	12%	2%	6%	13%	13%	11%	10%
Within the last year	7%	1%	2%	7%	7%	6%	6%
Longer ago	10%	2%	3%	6%	7%	12%	12%
Never	12%	3%	4%	7%	9%	12%	17%
Don't know	3%	4%	2%	1%	3%	2%	4%

Notes: \* This is the proportion of households with children in particular age groups



Waterloo Park  
Norwich, April 2016

### Management is becoming more varied

Over the current and next three years (2017-19) are you considering disposing of / transferring the management or ownership of any green space? (n=103)

	Sold entire site	Sold part of site	Transfer to community group	Transfer to voluntary / sector	Transfer to a trust	Other	Total
Public parks and gardens	5	12	24	14	13	11	79
Outdoor sports facilities	3	5	52	20	12	6	98
Amenity green space	18	20	26	12	9	14	99
Natural/semi-natural green space	12	7	28	18	12	10	87
Provision for children and young people	2	1	17	6	6	8	40
Other type of space	4	3	7	3	2	4	23

Notes: Numbers of authorities stating they have disposed of or transferred spaces.

Table 7 Local authority disposal or transfer of management of different types of green space that's being considered in the current and next three years (2017, 2018 and 2019)



Battersea Park, woodland garden  
Thrive / London, March 2013

### Sources of external income are rising

Ways to supplement the funding of parks (n=2,176)

	Strongly support	Somewhat support	Neither or oppose	Somewhat oppose	Strongly oppose	NET support
Greater funding from the National Lottery	39%	40%	15%	1%	1%	79%
More sponsorship of parks by businesses (e.g. funding of planting areas, features and facilities)	30%	45%	17%	2%	1%	75%
More funding from planning and local development (e.g. developer contributions from new housing)	32%	42%	16%	2%	2%	74%
Greater fundraising by local communities and park user groups	19%	46%	27%	3%	1%	65%
More commercial use of parks (e.g. ticketed events, fairs and shows)	18%	41%	25%	8%	3%	59%
Increasing charges for using park facilities (e.g. tennis courts or car parks)	4%	16%	23%	29%	24%	20%

Notes: Public opinions on options to supplement funding for parks. N.B. excludes those answering 'don't know' (July 2016)

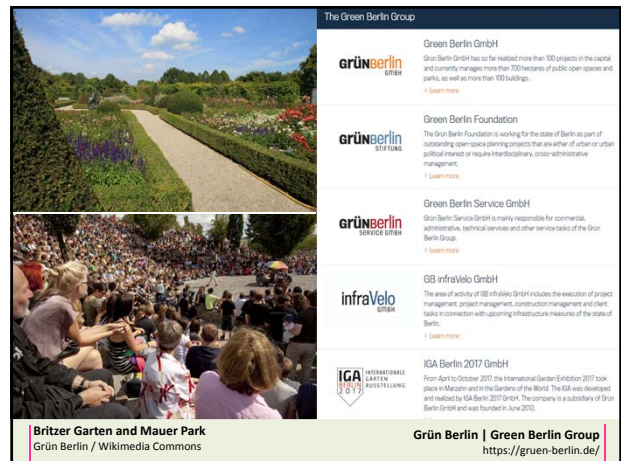
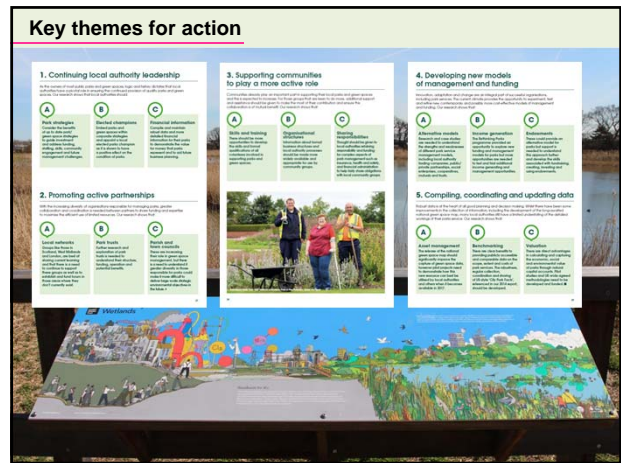
Table 8 Public opinions on options to supplement funding for parks. N.B. excludes those answering 'don't know' (July 2016)

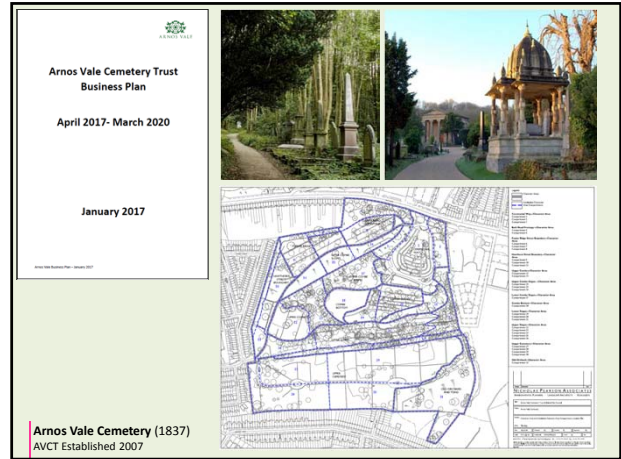


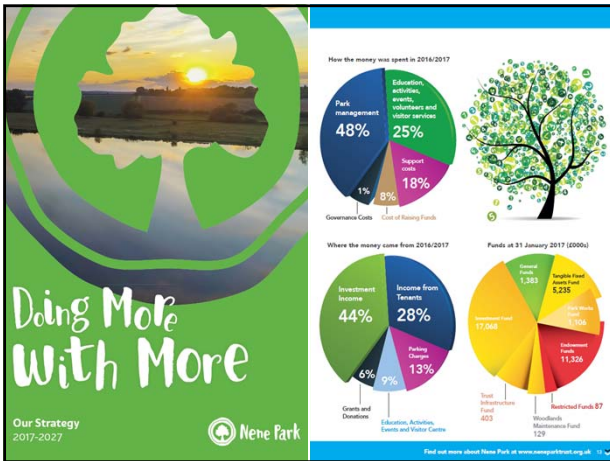
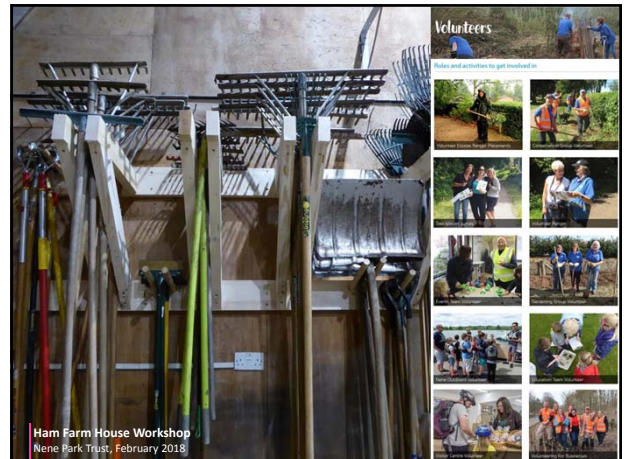
Handyside Park, Kings Cross  
London, September 2017

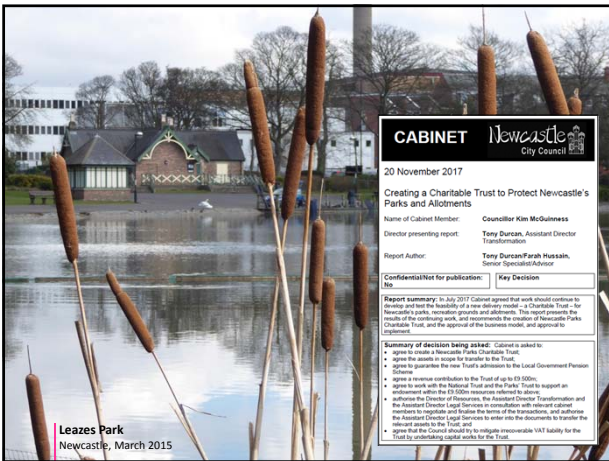
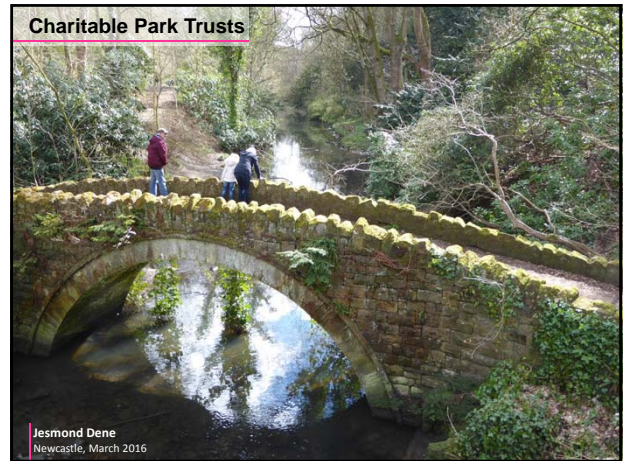


Canalside Steps, Regent's Canal  
Kings Cross, September 2017









**CABINET** Newcastle City Council  
20 November 2017  
Creating a Charitable Trust to Protect Newcastle's Parks and Allotments

Name of Cabinet Member: Councillor Kim McQuinn  
Director presenting report: Tony Durcan, Assistant Director Transformation  
Report Author: Tony Durcan/Parah Hussain, Senior Specialist Advisor

Confidential/Not for publication:  Key Decision

Support summary: In July 2017 Cabinet agreed that work should continue to develop and test the feasibility of a new delivery model – a Charitable Trust – for Newcastle's parks, recreation grounds and allotments. This report presents the results of the ongoing work, and recommends the creation of Newcastle Parks Charitable Trust, and the approval of the business model, and approval to Charitable Trusts.

Summary of decisions being asked: Cabinet is asked to:

- agree to create a Newcastle Parks Charitable Trust;
- agree the assets to be transferred to the Trust;
- agree to guarantee the new Trust's admission to the Local Government Pension Scheme;
- agree a revenue contribution to the Trust of up to £500k;
- agree to work with the National Trust and the Park Trust to support an environment within the £500k revenue model above;
- authorize the Director of Resources, the Assistant Director Transformation and the Assistant Director Legal Services to negotiate with relevant organizations to register and transfer the assets of the trust, and authorize the Assistant Director Legal Services to enter into the documents to transfer the relevant assets to the Trust; and
- agree that the Council should try to mitigate irretrievable VAT liability for the Trust by obtaining special status for the Trust.

