

# Annual Report 2025



## Gothenburg Global Biodiversity Centre

Faculty of Science  
and Technology

University of Gothenburg

Authors: Kate Evans, Jenny Klingberg  
& Anna-Lisa Wrangé

Contributors

Christine Bacon, Marie Stenseke,  
William Tejler, Mikael Östblom

2  
0  
2  
5



GÖTEBORGS UNIVERSITET



# Table of contents

Director’s welcome	1
Chair’s reflections	2
Executive summary	3
Enhancing interdisciplinary biodiversity research	4
Collaborative projects	6-11
Internal events	12-14
Public events	15-21
Examples of members activities	22-24
Awards	25-26
GGBC contributions to university education	27
Graduating Students	28-30
Communications	31-33
Organisation	33-36
GGBC Economic Report 2025	37
Funders & partners	38
Appendix : Publications	39-46



## Director’s welcome

Jenny Klingberg, PhD



This is my final annual report as the Director of Gothenburg Global Biodiversity Centre (GGBC), and I look back with pride on what we have accomplished together. It has been three very enjoyable years, and I have learned a lot! It is a privilege to work with the dedicated partners and members involved in GGBC, united in a belief that by working together it is possible to increase knowledge of biodiversity more successfully, reach further, and have a greater impact. GGBC continues to play a vital role as a collaborative platform, fostering research and engaging with society.



In this report, you can read about our activities in 2025. There are many highlights this year including the Commitment for Biodiversity and Ecosystem Services in the Gothenburg Region ([Bee-Go](#)), coordinated by GGBC through the [SamBio](#) project, financed by Region Västra Götaland. The Commitment is a joint initiative where actors from the business community, municipal administrations, and publicly owned companies have signed a declaration of intent to take concerted action to strengthen biodiversity and promote ecosystem services.



Another highlight is of course Sweden’s first [Swedish Biodiversity Symposium](#) hosted in Gothenburg in October. During this interdisciplinary conference, experts and stakeholders in biodiversity came together to promote positive developments in the field. The symposium was fully booked with around 400 participants discussing the theme “Transformative change – from knowledge to action”. GGBC was one of the main organisers of the event and 56 GGBC members contributed to the programme, through planning, giving talks and posters, contributing to more than 60 different programme events!

The genuine dedication, innovative initiatives, and enthusiasm for collaboration within GGBC gives me faith in the future. I hand over the role as Director, with strong confidence and trust, to Anna-Lisa Wrangé, who has been appointed as the new Director of GGBC by the Dean of the Faculty of Science and Technology, University of Gothenburg.



With this, I would like to thank all the fantastic colleagues, both within and outside the university, for your support and excellent collaboration. I look forward to our continued collaboration within Gothenburg Global Biodiversity Centre!

*Photos from top: Black-headed cardinal beetle - (Pyrochroa coccinea), Apple blossom (Malus sps.), children looking for crabs (Photo credits Kate Evans)*

## Chair's reflection

Professor Marie Stenseke



*Together for biodiversity!* That is the tagline adopted by the steering board for GGBC in 2025. The tagline signals companionship and a shared eagerness to advance our mission to enhance biodiversity and nature's contributions to people. This annual report shows that these are not just words, but a lived commitment. My engagement in GGBC comes with the joy and satisfaction of being part of such a flourishing organisation that delivers and makes a difference. I am certain these feelings are shared by my fellow GGBC colleagues.

The annual report presents an impressive range of activities and events. Few, if any, would have been possible without the competence and dedication of GGBC staff. My deepest gratitude goes to Jenny, Kate, Anna-Lisa, Mikael and Grazzia for their outstanding work! At the end of 2025, Jenny Klingberg stepped down from the role of director. With great wisdom and vision, she led the work of GGBC through three of the most vibrant years in its history, and her contributions to the organisation's development are of huge importance. While Jenny will be missed, we are very pleased to welcome Anna-Lisa Wrange as director for 2026. Anna-Lisa is well acquainted with GGBC and, likewise, Anna-Lisa's capacity is well-known and appreciated within GGBC.

Our internal work to clarify GGBC's fundamental aims and character has led us to define GGBC as a collaboration platform. SamBio, our largest project to date, now concluding after three years, has played an important role in shaping the organisation in this direction. I look forward to continuing our shared efforts in this spirit.

***Together for biodiversity!***

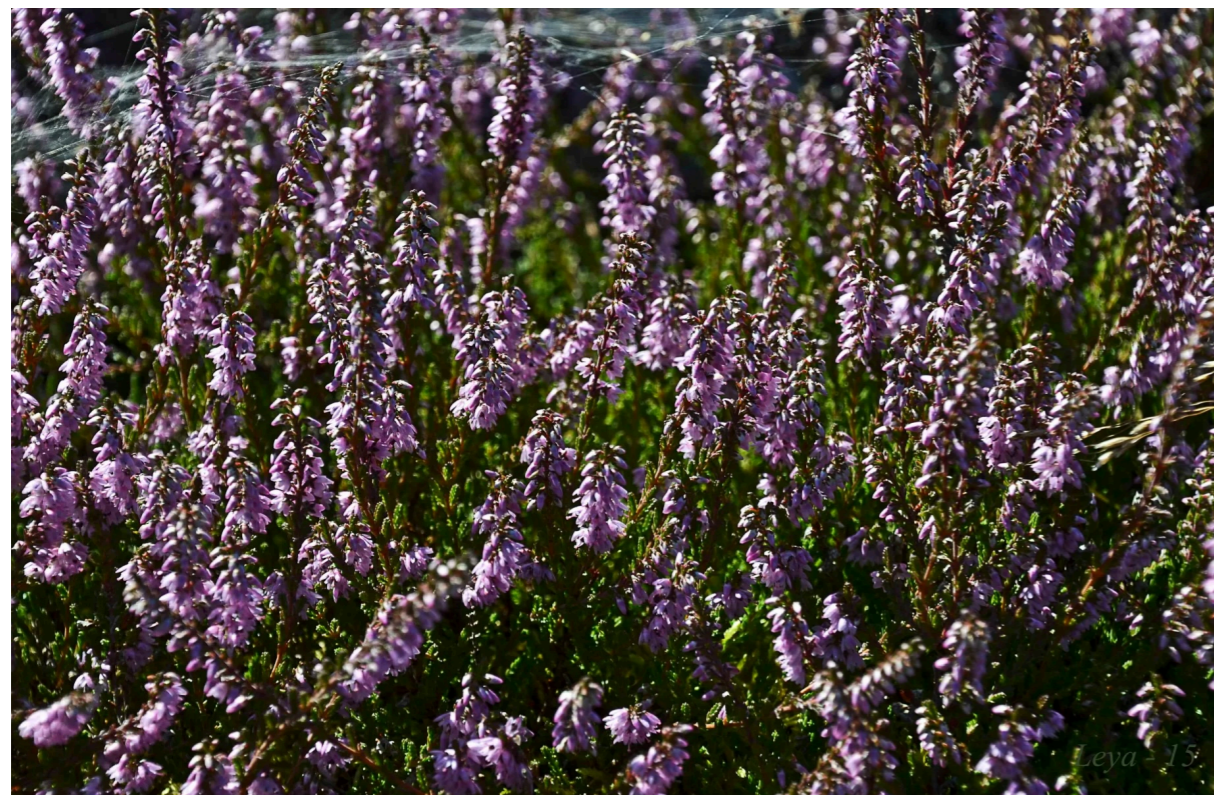


Photo: Ljung-Erica\_lagottocattleyaredit: (Photo credit Kate Evans)

## Executive summary

Coordinator, Kate Evans, PhD



The Gothenburg Global Biodiversity Centre (GGBC) is a collaborative platform hosted by the Department of Biological and Environmental Sciences at the University of Gothenburg and supported by the Faculty of Science and Technology. Its mission is to advance biodiversity research and strengthen the interface between science and society in response to the global biodiversity crisis, contributing to Agenda 2030 and the Sustainable Development Goals (SDGs) 14 and 15.

Since its launch in 2017, GGBC has grown into a network of 19 partner organisations in western Sweden, with Borås Djurpark joining in December 2025. During the year, a revised membership structure was introduced, and 35 new members joined the network.

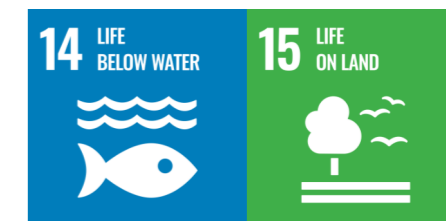
A major focus in 2025 was the completion of the SamBio project, a large-scale collaboration involving 22 organisations. The project demonstrated the value of coordinated action for biodiversity across sectors. Its school programme reached more than 23,000 pupils and 2,400 teachers. SamBio also strengthened collaboration with the business sector through the Bee-Go network, engaging companies and public actors in commitments to biodiversity.

GGBC continued to foster interdisciplinary research and knowledge exchange. Internal platforms such as Monday meetings and the Journal club stimulated dialogue across disciplines, connecting expertise in ecology, conservation, technology, and social sciences. Interdisciplinary workshops further strengthened collaboration and generated new research ideas and partnerships. Members contributed to over 140 scientific publications in 2025.

A key milestone was GGBC's role as a main organiser of the first Swedish Biodiversity Symposium, which brought together around 400 participants from academia, public authorities, business, and civil society. More than 55 GGBC members contributed to the programme, highlighting the Centre's central role in national biodiversity dialogue.

Public engagement remained a core priority and GGBC and its partners contributed to major events such as Vetenskapsfestivalen, Bioblitz, Västerhavsveckan, Frihamnsdagarna and Forskarfredag. These activities engaged diverse audiences and strengthened the connection between research and society. GGBC also contributed to international initiatives, including the EU-funded TETTRIs project, strengthening taxonomy through training, innovation, and public outreach.

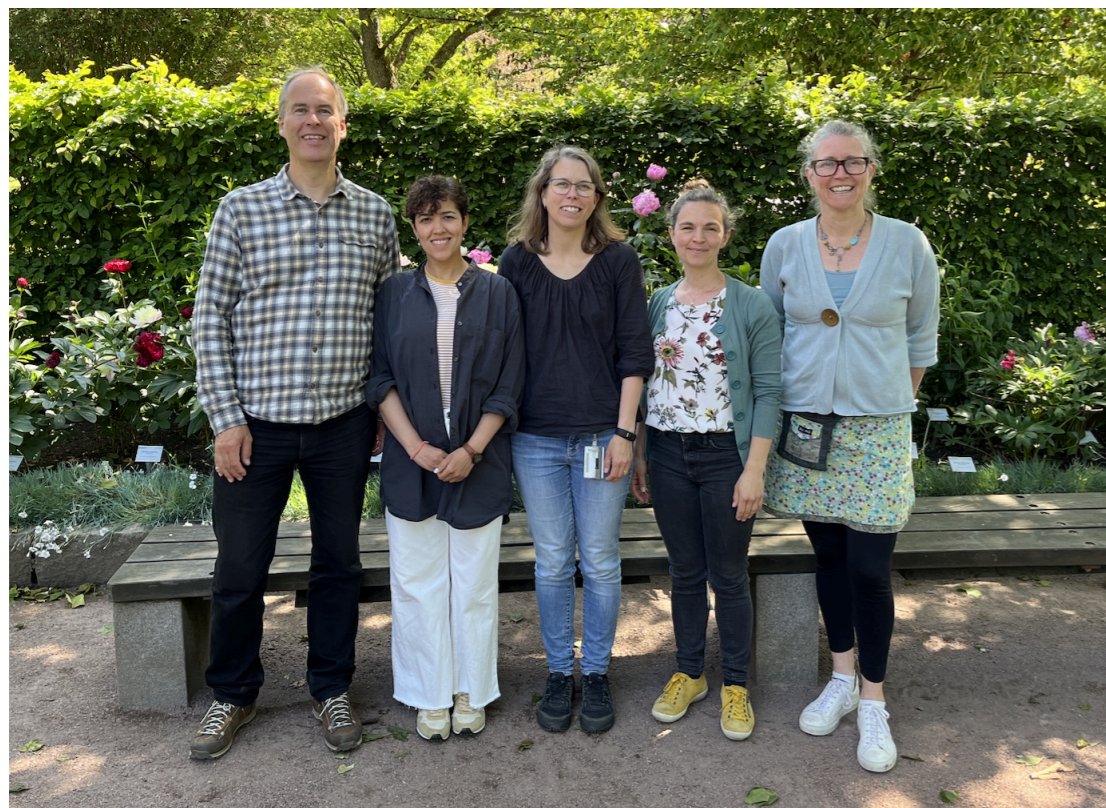
In 2025, GGBC further consolidated its role as a platform for collaboration, knowledge exchange, and societal engagement in biodiversity. The year demonstrated the impact of long-term partnerships, interdisciplinary approaches, and cross-sector collaboration. Building on these achievements, GGBC is well positioned to expand its activities and continue contributing to transformative change for biodiversity in Sweden and beyond.





The Gothenburg Global Biodiversity Centre (GGBC) brings together researchers, practitioners, and partner organisations to accelerate biodiversity knowledge and strengthen the connection between science and society.

With a global outlook and an expanding community of experts, GGBC continues to promote cutting-edge research, support evidence-based decision-making, and engage the public in understanding the vital importance of biodiversity for a sustainable future.



**Photo:** GGBC staff 2025 from right to left; Mikael Östblom, Grazzia Matamoros, Jenny Klingberg, Anna-Lisa Wrangle, Kate Evans

## Enhancing interdisciplinary biodiversity research



### Marie Stenseke, Chair Steering Board

During 2025 we continued our workshop series on interdisciplinary research with a full-day workshop in March, where we hosted nine participants working in two groups. The four beginners (those unable to join our initial workshop in 2024) played the interdisciplinary game, and the discussions during the game stimulated self-reflection and their understanding of the multifaceted differences between various scientific disciplines. The five participants who also attended the first event shared articles from their own discipline that mirrored how biodiversity is approached in advance. The participants were expected to read these before the workshop. During the workshop they discussed these papers and reflected on their similarities and differences of approaches. By the end of the day, there was a summing-up conversation about new insights and the prospects detected for improving interdisciplinary interactions. Below are some of the comments on how interdisciplinarity could be enhanced:

*“Work thematically – e.g. on forests, food production, urban green, water, post-human perspectives”*

*“Share pedagogical learning experiences”*

*“Provide tools that facilitates the start-up of interdisciplinary collaborations”*

*“Create meeting places, such as afterwork, activities”*

*“Recognise and address institutional barriers”*

*“Be aware of ‘constellation fatigue’, that researchers may be involved in too many committees and groups, and adding another one has to be managed.”*

On the 1st of December, we arranged a half-day workshop on interdisciplinary research on biodiversity. 35 participants, coming from all over the University of Gothenburg - scholars in philosophy, design, conservation, education, economics, information technology, biology, marine sciences, human geography, anthropology, geosciences, business administration, as well as from IVL Swedish Environmental Research Institute, Chalmers University of Technology, Gothenburg Botanical Garden, Halmstad University and the Maritime Museum and Aquarium.

During the workshop eight cross-disciplinary groups were formed around the themes urban nature, nature restoration, forests, measuring and valuing biodiversity, biodiversity and conservation, food security and sustainable food production, tourism and biodiversity, biodiversity in soils. Most of the time was spent on intense discussions. The discussions resulted in concrete plans for joint applications, plans for new meetings, problem framings, etc.

We aim to arrange another cross-faculty workshop during the spring term of 2026. The aim would be to follow up on the discussions and/or expand discussions on new themes, inviting both previous and new participants to join.

The reflections at the end of each activity firmly indicate that attendance deepened the participant’s understanding of and capacity for interdisciplinary research. There was a good mixture of disciplines at the workshops, which was positive for the outcome and the individual lessons learnt since the interactions between participants from different disciplines were central to the success of the workshop.

# COLLABORATIVE PROJECTS

## SamBio: Strengthening biodiversity through collaboration

**Anna-Lisa Wrangle, PhD & Mikael Östblom**



Over the past three years, 22 organisations across western Sweden, including all GGBC partners, have collaborated in the SamBio project (Samverkan för biologisk mångfald) to increase knowledge, engagement, and action for biodiversity. The project focused on engaging children through schools and teachers, and the business sector across Västra Götaland. It also aimed to strengthen and broaden collaborations among organisations working with biodiversity in the region. As the final year of the SamBio project, 2025 was filled with exciting activities and co-created outputs!

### A school programme reaching wide and far

The SamBio school programme on biodiversity run for two years and has reached more than 23,000 pupils and over 2,400 teachers through 985 lessons and 11 teacher training events. Representing a major achievement within the GGBC network. Teacher training activities included hands-on inspiration sessions for teacher education students at Universeum in March, a training event in Trollhättan in May on “Learning about nature through using all senses”, and a teacher evening at the Gothenburg Natural History Museum in October where 13 organisations, including four outside of SamBio (Naturskolan Lund, Karlstad University, Sportfiskarna, and BiodivOcean) came together to share experiences and inspire educators. In addition, an inspirational booklet on biodiversity “En sammanfattning för lärare om biologisk mångfald 2025” was revised and printed to support teachers in integrating biodiversity and outdoor education more actively into their curricula.

### Co-creation and co-hosting activities

Several SamBio partners developed new educational materials on biodiversity and shared them across the network. Examples include Väst kuststiftelsen’s lessons on marine litter and its impacts on biodiversity, and Navet Science Center’s hands-on material for monitoring biodiversity in different forest types together with school classes. The escape box concept on marine ecosystems, “The COD(e)”, was finalised during 2025. It was featured in the Vetenskapsfestivalen in April and is now available as a bookable school activity at several GGBC partner organisations, including Universeum, Maritime Museum and Aquarium and Havets Hus. Partners also visited one another to co-host lessons and activities, allowing them to reach schools beyond their usual geographical areas. For example, the Department of Marine Sciences at Tjärnö collaborated with Innovatum Science Center in Munkedal to inspire pupils to learn about marine biodiversity. Balthazar Science Center, the Gothenburg Botanical Garden, and the Gothenburg Natural History Museum, similarly exchanged lesson concepts and jointly delivered activities. Two rounds of The Nature Challenge competition were held in collaboration with [Naturuppdraget.se](https://naturuppdraget.se). Teachers and school classes completed nature-based challenges focused on observing, experiencing, and caring for nature, earning points by reporting their activities. The winning classes were awarded a free school trip to Nordens Ark in June and Innovatum Science Center in October. The initiative aimed to inspire teachers to explore nature together with pupils and create meaningful learning experiences beyond the classroom.



## Engaging businesses for biodiversity

For the business sector, SamBio continued to coordinate and develop the business network Bee-Go during 2025. [Bee-Go](#) (Commitment for Biodiversity and Ecosystem services in the Gothenburg region) is a joint initiative in which companies, municipal administrations, and publicly owned companies have signed a declaration of intent to take concerted action to strengthen biodiversity and promote ecosystem services. Through SamBio, GGBC has supported this collaboration by coordinating activities and establishing a scientific advisory board composed of GGBC researchers to review and guide the work.



**Photo:** Teacher event about biodiversity at the natural history museum, where nine partners from the SamBio project participated. (Photo credit Anna-Lisa Wrangle)



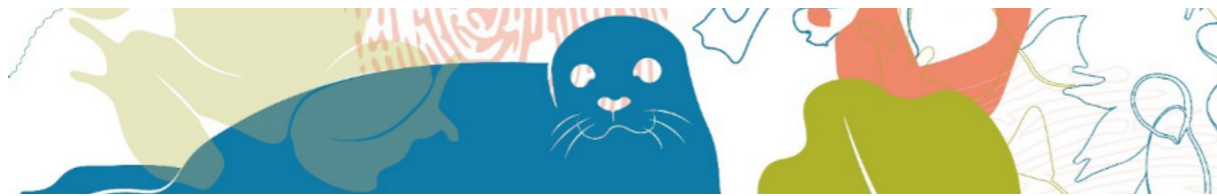
Scan QR code to learn about SamBio project



**Photo:** Christin Appelqvist and Anna-Lisa Wrangle running Escape box lessons for school classes at Tjärnö Marine Laboratory (Photo credit Martin Larsvik)

**Photo:** Bee-Go event in May 2025. (Photo credit Isaac Lundmark)





In 2025, SamBio also organised several events for businesses in Västra Götaland, including a full-day meeting at Nordens Ark in March on managing invasive species, and a full-day programme at Tjärnö Marine Laboratory in April focusing on biodiversity in Swedish waters and how companies can reduce their environmental impact. Two additional biodiversity events were co-organised together with other business networks, CSR Västsverige (in September) and Biosfärområdet Vänerskärsgården–Kinnekulle (in November) where SamBio led workshops using the Biodiversity Collage method, which was translated into Swedish during the project. At Frihamnsdagarna in August, SamBio hosted a seminar in Håpets Katedral on the progress and development of the Bee-Go network.

A practical guide on biodiversity for Swedish companies was also finalised in 2025. The guide, [Biologisk mångfald: En guide för svenska företag](#), was developed through workshops with several SamBio partners in collaboration with Vildriket and Azote. It was launched at an event during Almedalen in June, distributed widely across the region, and recorded as a webinar now available online.

#### Public engagement through events and exhibitions

Through SamBio, partners worked together to organise a range of public events, including the Vetenskapsfestivalen in April, the Bioblitz in Angered in May, and Västerhavsveckan in August. The project also played an active role at the Swedish Biodiversity Symposium in October, where SamBio organised two sessions with invited speakers: one on pedagogy and the importance of place-based learning for understanding biodiversity, and another highlighting how business initiatives and collaborative efforts can strengthen biodiversity.

Two public exhibitions were developed during the project. The first showcases the Herbarium GB and demonstrates the many ways herbarium collections can be used in science to understand the world around us. This exhibition will be displayed at Floras Rike in the Gothenburg Botanical Garden during summer 2026.



**Photos:** L) Swedish Biodiversity Collage workshop arranged for business networks in collaboration with Biosfärområde Vänerskärsgården–Kinnekulle, in Lidköping. (Photo credit Anna-Lisa Wränge).

R) Guide developed in the SamBio project about biodiversity for businesses.



The second exhibition focuses on seals and their importance for biodiversity in marine environments. It will be available in Slottsskogen, inside the Gothenburg Natural History Museum, and at Havets Hus in Lysekil. This exhibition was developed in collaboration with the seal research team at the Department of Biological and Environmental Sciences at the University of Gothenburg.

Knowledge exchange within the SamBio network continued through study visits to different partner organisations. In June, an excursion to Stora Amundön brought the entire project together, strengthening collaborations and generating ideas for future initiatives. The SamBio project concluded with a final meeting in December, where experiences and lessons learned from the collaboration were shared.

#### Lessons learned from the project

The SamBio project clearly demonstrated how much can be achieved for biodiversity through collaboration. A dedicated coordinating function proved essential for driving initiatives forward, capturing new ideas, and ensuring effective follow-up throughout different processes. The project benefitted greatly from the GGBC network—a group of engaged, knowledgeable, generous, creative, and open-minded individuals representing a wide range of expertise, including research, education, and nature conservation, as well as extensive resources, networks, and contacts.

The four science centres, not currently part of GGBC, Navet, Innovatum, Balthazar, and Dalénium, also benefitted from the project by strengthening their knowledge of biodiversity. The project inspired them to further integrate biodiversity perspectives into their programmes and activities, and they are now actively planning new collaborations with GGBC partners.

Co-creation was successfully implemented throughout SamBio. Through creative brainstorming workshops and matchmaking between partners' competencies and resources, new concepts and materials were developed outcomes that would not have been possible without SamBio. The combination of scientific expertise, pedagogical experience, practical nature conservation knowledge, and access to tools, resources, and broad networks significantly enhanced both quality and impact.

Collaboration among 22 partners was complex but manageable when supported by trust, regular communication, and inclusive processes. Relatively small amounts of funding per partner had a strong leverage effect when combined with dedicated time and engagement from participating organisations. The project's broad and flexible framework allowed funding to be allocated throughout the project period to support new initiatives and ideas that emerged through dialogue among partners, helping to strengthen and establish new collaborations.

Overall, SamBio showed that well-structured, long-term collaboration can significantly strengthen biodiversity efforts and generate far greater reach and impact than individual organisations could achieve alone. We now aim to apply for funding to continue and further develop the successful collaborative initiatives that emerged through SamBio.

A big THANK YOU to all GGBC members who contributed to the project!



Photos from the SamBio project. Photo credits Anna-Lisa Wrangle



**TETTRIs**  
Kate Evans, PhD



### TETTRIs

The TETTRIs (Transforming European Taxonomy through Training, Research and Innovations) project, which has been running since 2023 and will end in May 2026, addresses the critical gap in taxonomic expertise crucial for tackling biodiversity loss and ecosystem degradation. The project is funded by the European Union and led by CETAF, the Consortium of European Taxonomic Facilities. GGBC as well as GGBC partners the Gothenburg Natural History Museum, and the Gothenburg Botanical Garden are part of the TETTRIs consortium. The key aim of this project is to transform taxonomy in Europe through:

- **Training:** Advancing taxonomist workforce, with capacity building and training programmes to facilitate the continuous upgrade of competencies and skills.
- **Research Transfer:** Engaging citizen scientists in natural sciences, as key actors in co-generating taxonomic knowledge and collecting biodiversity data.
- **Innovation:** Developing innovative methods and digital solutions to improve taxonomic knowledge, support integrative and comprehensive taxonomy, speed up species discovery and description, and making collections and knowledge available at large scale.



GGBCs contribution to this in 2025 included a presentation at the All Hands Meeting in Brussels, a presentation of the Blue Print at the Swedish Biodiversity Symposium, showcasing Taxonomy Recognition Day and instigating a Cookbook of Recipes, an integral part of the Blue Print and key to communication to other interested parties and the sustainability of the recommendations.

On [Taxonomy Recognition Day](#), an annual event celebrated on Carl Linne's birthday on the 23rd of May, we joined the global celebration of the scientists and discoveries behind the naming and classification of life on Earth. As part of the #NameItToSaveIt campaign, GGBC members shared some of their favourite species in social media. The campaign reached over 500,000 people, shining a spotlight on the importance of taxonomy in understanding and protecting biodiversity. Every name tells a story, and behind each newly described species is a vital step toward conservation and recognition.

Thank you for joining us in celebrating the incredible work of taxonomists around the world. Let's keep the momentum going, because to protect life, we must first know its name.

For more information, visit [tettris.eu/trd](http://tettris.eu/trd)

**Photos from top:** Jenny Klingberg and Kate Evans at the TETTRIs All Hands on Meeting in Brussels (Photo Credit CETAF) Kate Evans presenting at the TETTRIs Meeting (Photo credit Jenny Klingberg).

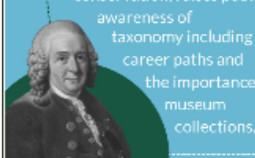
**TAXONOMY RECOGNITION DAY**

**Date:**  
23 May (every year), on Linnaeus' birthday.

**Campaign:**  
#NameItToSaveIt  
Photograph an organism, find its scientific name, and share it!

**Reach in 2025:**  
700,000+ people across five continents; dozens of museums, universities, and citizen groups.

**Why it matters:**  
Celebrates the act of naming as the first step in conservation; raises public awareness of taxonomy including career paths and the importance of museum collections.



# INTERNAL EVENTS

## GGBC annual members meeting

The 9th Annual Member meeting was hosted at the Department of Biological and Environmental Sciences, University of Gothenburg in December. Members, partners, and collaborators gathered for a light lunch before the formal programme commenced, providing an opportunity for informal discussion and exchange among representatives from the Centre's broad network.

The meeting opened with welcoming remarks from Marie Stenseke, Chair of the GGBC Steering Board, who emphasized the Centre's ongoing commitment to fostering interdisciplinary collaboration in response to accelerating global biodiversity challenges. This was followed by an update from GGBC Director Jenny Klingberg, who summarised GGBC's activities during 2025 and outlined its strategic priorities for the coming years.

The scientific programme began with a presentation by Christine Bacon from the University of Gothenburg, who examined the long-term influence of human activity on biodiversity patterns. Attention then turned to applied conservation initiatives with Linda Thelin from Slottsskogen Zoo presenting the ZooLIFE pollinator project, an international collaboration among European zoos aimed at supporting pollinators in urban environments. Marine conservation was represented by Elias Neuman of **Havets Hus** and the University of Gothenburg, who shared results from tracking captive-bred small-spotted cat sharks (*Scyliorhinus canicula*) released into the wild. Plant biodiversity and community engagement were the focus of the next contribution, presented by Helen Ekvall from the Gothenburg Botanical Garden and the University of Gothenburg. Drawing on experiences from the EXPBIO project, she outlined the importance of public involvement and educational outreach.

The last session of the meeting focused on the intersection of biodiversity and economic systems with Viktor Elliot from the University of Gothenburg discussing how biodiversity considerations are increasingly being integrated into financial decision-making, reflecting broader developments in sustainability reporting and risk assessment within the financial sector. The meeting concluded with a summary of the day's discussions, reaffirming the importance of cross-disciplinary cooperation and knowledge exchange in addressing biodiversity challenges. Participants later reconvened informally over dinner, continuing the dialogue initiated throughout the afternoon.

**Photos:** (R) Linda Thelin from Slottsskogen Zoo, presents at the Annual members meeting. (L) GGBC Chair, Marie Stenseke,, pays tribute to Director Jenny Klingberg( at the Annual Members meeting. Photo credit Kate Evans)



## Monday meetings

In 2025, a total of 21 meetings were held, with in total 322 participants, showcasing a remarkably broad and interdisciplinary range of research across biodiversity, ecology, taxonomy, conservation, technology, and environmental change. Spanning marine, terrestrial, historical, and digital perspectives, the talks highlighted how modern biodiversity science connects field observations, genomics, artificial intelligence, ecological monitoring, and societal engagement.

The seminar series also explored historical and landscape-level perspectives on biodiversity, from early modern meadow management to the use of long-term records to detect climate-driven ecological change. Several talks addressed species-specific or system-level ecology, including the habitat preferences of African savannah elephants, carnivore diets under human pressure, the importance of maerl beds, and the ecology of Nordic fungi.

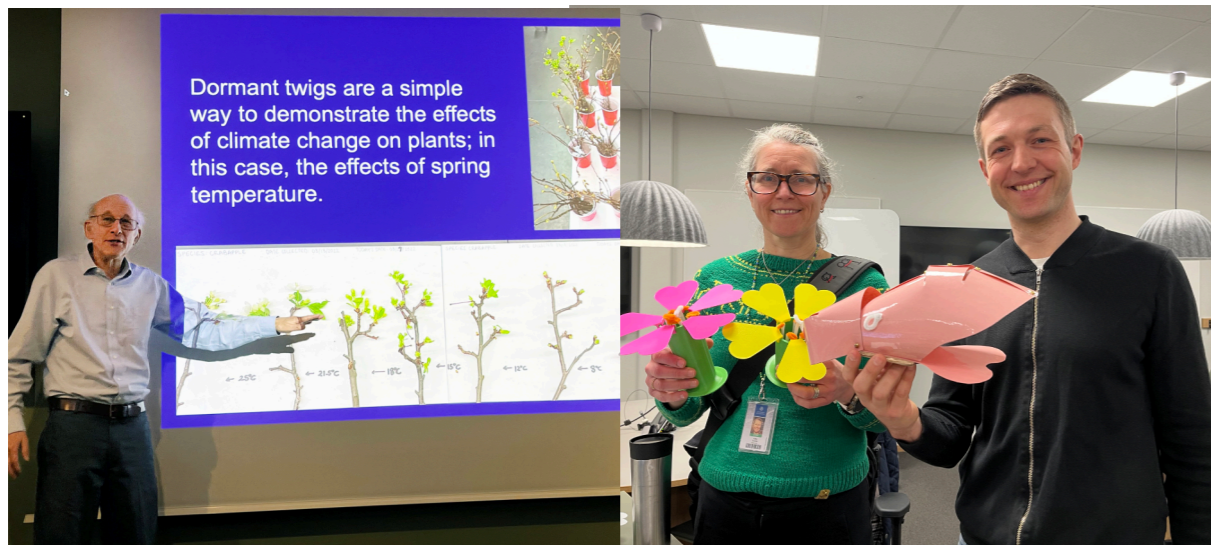
Broader questions of public engagement, co-design, and conservation action emerged through talks on youth-led biodiversity solutions, insects and action competence, and the role of public narratives in conservation. Advanced research presentations on macroevolution, pathogen virulence, and invasive planktonic protists added depth to the evolutionary and ecological dimensions of the programme.

This year we also welcomed Peter Lampert of Karlstad University, Richard Primack from Boston University and Matthew Tinsley from Stirling University; these talks were open to non GGBC members in the Department of Biological and Environmental Sciences.

Together, the 2025 seminars demonstrated a vibrant, cross-disciplinary community, linking molecular tools, ecological fieldwork, digital innovation, historical analysis, and societal engagement. The programme highlighted how diverse research approaches collectively advance our understanding of biodiversity patterns, drivers, and conservation challenges, locally, regionally, and globally.



**Photo:** GGBC members enjoy coffee and chats after a presentation. Kate Evans



**Photos:** Guest speakers, Richard Primark and Peter Lambert. (Photos by Kate Evans & Anna-Lisa Wrangé)

## Journal club

### William Tejler, PhD student



Every other week, on Tuesdays, the GGBC hosts a journal club in Natrium at the University of Gothenburg. Participants in this journal club take turns in leading the meetings and every time a leader selects a scientific paper related to biodiversity, ecology, systematics, or other related biological fields, and guides the discussion.

In 2025 we discussed a wide range of topics, including e.g.:

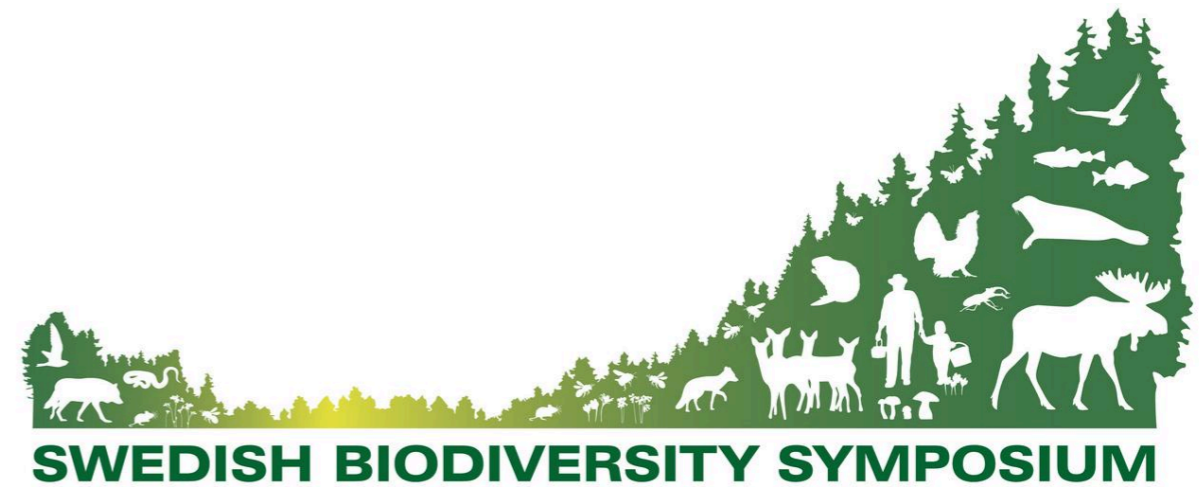
- Bush meat hunting pattern in Central Africa
- Windmills and their biodiversity implications
- The 'sixth mass extinction' controversy

Attendees are expected to read the selected paper beforehand to actively engage in the discussion. While the journal club is beneficial for everyone, PhD students can earn course credits (0.2 per meeting, up to a total of 4 credits). The meetings are open to individuals at various career stages, and everyone is welcome. Articles are announced in the [#journal-club](#) channel on the GGBC Slack page.



**Photos:** Wood sorrel, *Oxalis acetosella* (Credit Kate Evans). The scrub *Salix lanata*. (Credit Anne Bjorkman)

# PUBLIC EVENTS



In October, the Swedish Biodiversity Symposium 2025 took place – Sweden's largest interdisciplinary conference on biodiversity. The event, with the theme of Transformative change – from Knowledge to Action, brought together researchers, experts and stakeholders from across sectors to encourage positive developments in the field. GGBC was one of the main organisers of the symposium, and more than 55 GGBC members contributed to the programme, through planning, giving talks and posters, contributing to more than 60 different programme events. Around 400 participants attended the symposium to discuss how efforts to promote biodiversity can be strengthened, to present their research, gain inspiration from others, and reconnect with both old and new colleagues.

The symposium aimed to operate at the interface between research, public authorities, business and society – thereby creating new opportunities to advance biodiversity work in Sweden and beyond. The conference provided extensive opportunities for dialogue – both among researchers from different disciplines and between academia and other societal actors, including businesses, public agencies and non-profit organisations.

“Sweden has been missing a forum with such a broad perspective, where diverse stakeholders can gather to discuss how to safeguard biodiversity. The strong interest in this symposium signals a clear willingness to embrace change, and the positive, dynamic atmosphere throughout the event gives confidence in the future”, says Jenny Klingberg, director of GGBC and part of the organising committee.

In connection with the symposium, a Book of Abstracts was published, containing over 100 abstracts from the presentations delivered at the event.

Read the Book of Abstracts [here](#). The intention is for the Swedish Biodiversity Symposium to become a recurring event, with plans already under way to organise the next symposium in Uppsala, in 2027.



## Annual biodiversity lecture

As part of Vetenskapsfestivalen in Gothenburg, the Gothenburg Global Biodiversity Centre contributed to the festival's public programme through the GGBC Annual Biodiversity Lecture on the 1st of April. This year's lecture was held at the Gothenburg City Library and featured biologist, researcher and author Fredrik Moberg, known for *Den uppfinningsrika planeten* (2021) and *Korallernas planet* (2024).

Moberg's presentation explored how nature's own strategies and solutions can inspire more sustainable ways of living, highlighting examples of biomimicry and innovation grounded in ecological processes. The lecture attracted a broad audience and formed an important part of GGBC's outreach work during the festival, reinforcing the Centre's commitment to engaging the public in current biodiversity research and dialogue.

The event served as an opportunity to connect researchers, students, and members of the public with perspectives on sustainability informed by natural systems.

## Vetenskapsfestivalen

In addition to the GGBC Annual Biodiversity lecture, the Gothenburg Global Biodiversity Centre members and partners took part in the annual Vetenskapsfestivalen in many ways, contributing to a wide range of public events aimed at increasing awareness and understanding of biodiversity. The festival provided an important platform for GGBC members to engage with the public, share current research, and highlight the relevance of biodiversity across urban, marine, and cultural environments.

GGBC Director Jenny Klingberg gave a public talk together with professor Håkan Pleijel, at Department of Biological and Environmental Sciences, at University of Gothenburg at the Gothenburg City Library. Their presentation explored the role of urban greenery in improving air quality and delivering essential ecosystem services, illustrating how urban trees and greenery contribute to healthier and more resilient cities.

The Centre for Sea and Society offered a hands-on workshop during the school programme on "farming the sea," held between the 3rd until the 11th April. Participants were introduced to sustainable marine cultivation practices and the ecological importance of sea-based food production and impact of biodiversity.

The Gothenburg Natural History Museum invited the public behind the scenes, providing rare access to parts of its scientific collections. Visitors were able to meet curators and learn about the research value of the museum's extensive biodiversity archives.

The Maritime Museum and Aquarium hosted an educational session focusing on the life cycle of sea trout and the crucial role of small waterways in sustaining healthy fish populations.

Together, these activities demonstrated the breadth of GGBC's engagement during Vetenskapsfestivalen and reinforced the Centre's commitment to public outreach. By participating in events that bridge research, culture, and community learning, GGBC continues to foster a deeper understanding of biodiversity and its significance for society..

## Bioblitz

GGBC celebrated the International Day for Biological Diversity (22<sup>nd</sup> May) with a Bioblitz, a 24-hour species race where experts, enthusiasts and curious visitors gathered to find and identify as many species as possible within a specific area. During the event more than 1,000 observations were made and at least 322 confirmed species were recorded by biodiversity experts, school groups and the public.

The event was coordinated by GGBC partner Gothenburg Botanical Garden with many GGBC members and partners contributed. Throughout the programme, specialists were available to help identify birds, plants, trees, fungi, and soil and water fauna collected during guided walks and organised activities. Their expertise provided valuable insights into local biodiversity and helped participants deepen their understanding of the species found in the area.

The public event on the Sunday afternoon welcomed over 350 visitors of all ages, while 70 local school children joined on Monday morning to explore science and biodiversity through fieldwork and interactive learning. The event continued to strengthen community engagement and foster interest in nature among both young people and adults.



Photos: Bioblitz Gothenburg. (Photo credits Anna-Lisa Wrangé)

## Västerhavsveckan

Västerhavsveckan (West Coast Sea Week) took place on from the 3<sup>rd</sup> until the 11<sup>th</sup> of August 2025, offering a full programme of activities designed to highlight the unique marine environments along Sweden's west coast. The week featured coastal excursions, beach cleanups, marine science demonstrations, and educational talks for participants of all ages, all aimed at increasing understanding of—and engagement with—the region's marine ecosystems.

As part of the programme, GGBC and partners hosted an event introducing participants to marine biodiversity of Askimsviken. Educators and researchers from Slottsskogen, Gothenburg Natural History Museum, Västkoststiftelsen, Universeum, and the Department of Biological and Environmental Sciences at the University of Gothenburg guided visitors in exploring marine life along the shoreline and in the shallow waters. During the event, participants learned about characteristic species of the area and had the opportunity to discover one of the North Sea's most iconic inhabitants, the harbour seal (*Phoca vitulina*), and could chat with GGBC members Daire Carroll and Jessica Harvey-Carroll. The session provided insights into seal behaviour and biology, including diving capacity, dental structure, and population numbers. Visitors were also given guidance on how to act responsibly when encountering seals or seal pups in the wild, as well as the chance to take a light-hearted "Sealie" photo.

Meanwhile, GGBC partner Centre for Sea and Society were busy at Flytevi with an open house for people to learn all about blue allotments and sustainable ways of harvesting from the sea. Centre for Sea and society also attended the marine food market in Fjällbacka. Additionally, the public got to meet marine biologists on the beautiful Kvarsita sailboat during its tour along the west coast (including Héléne Dièval from GGBC partner Västkoststiftelsen), who encouraged the public to take care of the west coast through beach cleaning activities.



Photos: Marine biodiversity activities at Askimbadet during Västerhavsveckan, Gothenburg, during Västerhavsveckan in August. Photo credits Anna-Lis Wrangé

## Frihamnsdagarna 2025

From the 29th until the 31st August 2025, GGBC and our members participated in Frihamnsdagarna, Gothenburg's open festival focused on ideas, dialogue, and democracy. The event once again brought together organisations, researchers, policymakers, and the public to discuss pressing societal issues and explore collaborative solutions.

During the festival, SamBio hosted a session highlighting the Bee-Go– Biodiversity and Ecosystem Services in the Gothenburg Region initiative, which is coordinated through the SamBio project. Launched in spring 2025, the Bee-Go Memorandum of Understanding represents a shared commitment among major actors from both the business community and the City of Gothenburg to prioritise biodiversity. The discussion provided an overview of the initiative's ambitions and explored how organisations and companies can contribute to strengthening biodiversity locally.

Our partner, Gothenburg Botanical Garden were also busy during Frihamnsdagarna. GGBC member Henrik Sjöman, researcher and scientific curator was there discussing the importance of finding new trees that can fit in future urban environments in a world of climate change. His colleagues and GGBC members Åsa Kruger and Stina Weststrand offered the perfect after-work warm-up with a botanical quiz where the hosts of the Gothenburg Botanical Garden Podcast took a new approach to species knowledge based on the plants in our drinks.

GGBC partner Centre for Sea and Society were also at Frihamnsdagarna, to teach the public about how sustainable food can be grown in the sea with an opportunity to taste the seafood of the future. The topics of marine biodiversity and invasive species were also covered.



**Photo:** Bee-Go business event in Håpets cathedral, during Frihamnsdagarna in August. (Photo credit Anna-Lisa Wrangé)

## European researchers' night

On the 25th of September 2025, GGBC and the Gothenburg Natural History Museum jointly hosted this year's European Researchers' Night, a flagship European initiative dedicated to bringing science closer to the public. The theme for the evening (and the festival 2025), "The Soil Under Our Feet," highlighted the often-overlooked ecosystems and processes that underpin life above ground.

Six local researchers, including GGBC members Helena Wiklund, Ted von Proschwitz, Jenny Klingberg and Emily Stragepede, shared their work on topics ranging from deep sea mud plains and coastal shells to garden invertebrates, urban biodiversity, and the geoscience of soil contamination. Five public teams had the opportunity to engage directly with the researchers, asking questions and exploring the science beneath our everyday environments.

The event also featured a lively quiz based on questions submitted by the scientists themselves. While the winning teams received prizes, the evening's greatest value lay in the connections formed: students rekindled an interest in science, participants met new people with shared curiosity, and attendees of all ages—from children to retirees—took part in an inclusive and inspiring night of learning.

European Researchers' Night 2025 once again demonstrated the importance of open, accessible science communication. By creating opportunities for dialogue between researchers and the public, the event strengthened trust in science, encouraged curiosity, and highlighted that scientific discovery is not confined to laboratories - it is part of everyday life and belongs to everyone.



**Photos** of the researchers engaging with the public at European Researchers night at the Gothenburg Natural History Museum. ((Photo credits Jenny Klingberg)

# EXAMPLES OF MEMBERS ACTIVITIES

## Unga forskare

Every year, high school students compete with their high school projects in natural science in a national competition called [Unga Forskare](#). The semifinal taking place in Gothenburg has hosted various GGBC members in the jury throughout the years with representatives from multiple partners in the GGBC. This year was no different with Heather Reese from the Department of Earth Sciences along with Henrik Nilsson and Heléne Aronsson from the Department of Biological and Environmental Sciences at University of Gothenburg participating in the multifaceted jury.

## Seal observers

GGBC members Daire Carroll and Jessica Harvey-Carroll (Department of Biological and Environmental Sciences) led the University of Gothenburg workshops for those interested in learning more about seals, their importance in the marine ecosystem, and how to contribute to local research efforts. The workshops provided attendees with foundational knowledge and practical skills to become Seal Observers within their communities. Learn more about Salfie-ID [here](#).



Photo: Harbour seals (*Phoca vitulina*) on rocks. (Photo credit Daire Carroll)

## Facilitating dialogue between research, businesses and the public sector

GGBC Director Jenny Klingberg moderated a webinar organised by Reväst, highlighting the vital role that businesses and the public sector play in protecting biodiversity and advancing sustainability. The event showed practical examples of how cross-sector collaboration can strengthen biodiversity efforts across the region. This session offered valuable perspectives on how coordinated action between sectors can create meaningful, lasting impact for nature and society.

## BiodiverCity

The BiodiverCity conference, organised by StadsKupan, was held on the 20<sup>th</sup> of November 2025 at Kronhuset in Gothenburg and brought together experts, organisations, and community members to explore how cities can strengthen biodiversity and become more nature-rich. The event featured inspiring talks from many speakers including GGBC member Viktor Elliot (Department of Business Administration), alongside practical tools for creating biodiversity in urban spaces. GGBC Director Jenny Klingberg participated in a panel discussion. With networking opportunities and a live music performance, the conference combined knowledge-sharing with a focus on reimagining greener, more sustainable urban environments.

## Upptäckarklubben

Upptäckarklubben is an extracurricular science club for children, in grades 4–5, organised by the Faculty of Science and Technology at the University of Gothenburg. The club aims to stimulate children's curiosity in science and gives them the opportunity to explore natural phenomena through hands-on activities and experiments. The club is designed to complement school education by providing experiential learning and direct contact with scientists, students, and educators. Through investigations, discussions, and collaborative activities, the programme encourages children to develop curiosity, critical thinking, and an interest in science and mathematics. In May, GGBC members Karen Otto (Gothenburg Botanical Garden) and Lotta Backman (Gothenburg Natural History Museum) arranged an activity using the Escape box: "*Eken – en nyckel till mångfald*" where the children got to explore concepts of key species, biodiversity and ecosystems. Another activity was arranged by the Department of Biological and Environmental Sciences, where Kai Sattler, together with Claes Gustafsson from the Herbarium GB, showcased how to identify, collect and preserve plant specimens.



Photo: Kai Sattler during Upptäckarklubben, demonstration how to collect Herbarium specimens ((Photo credit Erik Salmonsson)

## Skagerrak sail

GGBC members Christian Nilsson and Pierre de Wit were marine scientists from Norway, Sweden, and Denmark invited to take part in an inspiring outreach voyage as part of the Skagerrak Sail, a collaborative initiative led by the University of Agder and Norway's Institute of Marine Research. The team sailed the tallship *Sørlandet* across the Skagerrak, bringing marine science to the public through engaging onshore events. During each stop, the public were invited on board to experience hands on exhibits, conversations with the scientists, giving visitors a rare glimpse into the marine environment through the experience and enthusiasm of the marine scientists. The ship's journey underscored the importance of meaningful science communication and the power of personal enthusiasm in inspiring care for the ocean.



**Photos:** (L) The tallship *Sørlandet* home of the Skagerrak Sail initiative, taking marine scientists to the public. (R) GGBC Member and Master student Christian Nilsson engage the public in his research onboard the tallship *Sørlandet*. (Photo credits: University of Gothenburg. Knut Arne Gjertsen)

## Opening of new field station

The Alto da Figueira Field Station, founded by GGBC member Alexandre Antonelli, has officially opened in a 120-hectare private reserve of Brazil's Atlantic Forest. Serving as the research base for HUB (Hidden Universe: Biodiversity), the station will host students, scientists, and partners working to advance biodiversity research, conservation, and training. HUB's mission includes documenting hidden life on Earth, protecting and restoring threatened species and ecosystems in collaboration with local communities, and sharing knowledge to connect people with nature.



## Awards

Partner **Centre for Sea and Society** was recognised as one of three winners of the Circular Gastronomy Challenge, an innovation award highlighting initiatives that advance the transition to a circular economy and a more sustainable food system. The winning concept, Blue Community Gardens, explores small-scale co-cultivation at sea, creating marine "allotments" accessible to fishermen, restaurateurs, and private individuals.

Member and Founder of GGBC, **Alexandre Antonelli** was awarded the Rosén Linnaeus Prize of Botany by the Royal Physiographic Society of Lund, one of Sweden's oldest and most prestigious academies – established in 1772 – aimed at promoting the natural sciences, medicine and technology.

Member **Harith Farooq**, who is a herpetologist and Postdoctoral Researcher now based at the Center for Macroecology, Evolution and Climate (CMEC) in Denmark, has had a newly discovered skink species officially named after him. The scientific name, *Trachylepis farooqii*, translates as "Farooq's skink" This recognition highlights his significant contributions to reptile diversity research.

Member **Daire Carroll** was awarded The King Carl XVI Gustaf Foundation's 50th Anniversary Fund for Science, Technology and the Environment. This award was founded to promote research, technological development and entrepreneurship that contribute to the sustainable use of natural resources and the preservation of biodiversity. He received the grant for his project 'Why are birth rates declining among Sweden's harbour seals?' Daire says of the event: - 'Studying ecology has taken me to some amazing places, but I never expected the royal palace to be one of them. Immensely grateful to His Majesty the King and the board of the King Carl XVI Gustaf Foundation's 50th Anniversary Fund for their support and to Karin Hårding for nominating me.'



**Photo:** Daire Carroll receiving The King Carl XVI Gustaf Foundation's 50th Anniversary Fund for Science, Technology and the Environment. (Photo credit University of Gothenburg)

GGBC member **Anne Bjorkman** received the Faculty of Science and Technology's 2025 Research Award at the University of Gothenburg for her exceptional contributions to understanding how human activities, particularly climate change, are reshaping global biodiversity and ecosystem functioning. Her work combines large-scale data syntheses with experimental studies, with a strong focus on rapidly warming Arctic and alpine ecosystems. Anne's findings support improved predictions, inform policy decisions, and contribute to conservation and public awareness of biodiversity and climate issues - impact that the award recognises as both timely and essential.



**Photos:** Anne Bjorkman winner of the Faculty of Science and Technology's 2025 Research Award at the University of Gothenburg, receiving her award. (Photo credits University of Gothenburg)

## GGBC CONTRIBUTION TO UNIVERSITY EDUCATION

**Course: Biodiversity in the 21<sup>st</sup> century**

**Christine Bacon, PhD**



Understanding what biodiversity is, why it is important, and ways of conserving and managing it efficiently is fundamental to addressing the challenges we face in the 21st century. Human life is at risk due to our current biodiversity crisis, and as guardians of the natural world, our management strategies of ecosystems and species are of critical importance. This university course introduces the basic principles of biodiversity and its conservation from the natural science perspective, as well as integrates social sciences for a transdisciplinary understanding.

This year we hosted 28 students from a range of backgrounds from bachelor students to retired professionals, those working in the field and those simply fascinated by the subject and wanting to learn more.

This course is important as it is a concrete way we reach the public and create discussion surrounding topics covered in the course. Many GGBC partner organisations participated in the course, including Nordens Ark, Slottsskogen Zoo, the Gothenburg Museum of Natural History, the Gothenburg Botanical Garden, and the Department of Biological and Environmental Sciences.



**Photo:** Child holding buttercup. (Photo credit Anna-Lisa Wrangle)

# GRADUATING STUDENTS

Many of our GGBC members have students that contribute to their research, some of which are GGBC members themselves. Here are some of the students that graduated in 2025.

## PhD students

### Minna Seppänen Panas

Department of Biological and Environmental Sciences

Title: Virtuella och verkliga platser affordanser för lärande om biologisk mångfald – ett pragmatiskt och ekologiskt perspektiv på undervisning i formella, icke-formella och informella lärsituationer. Find the thesis [here](#)

### Wilhelm Osterman

Department of Biological and Environmental Sciences

Title: Resolving pollination paradoxes: Bridging theory and empirical observations to understand pollination ecology and evolution. Find the thesis [here](#)

## Master students

### Elias Neuman

Department of Biological and Environmental Sciences (and Havets Hus)

Title: Movement and behaviour of captive-bred small-spotted catsharks (*Scyliorhinus canicula*) Released on the Swedish West Coast.

### Hanna Kyséla & Jennie Utterberg

School of Business, Economics and Law

Title: Bridging the financing gap for biodiversity in emerging and developing markets– A case study on Brazil. Find the thesis [here](#)

### Lisa Jansson

Department of Biological and Environmental Sciences

Title: Life cycle inventory analysis of animal feed: Development of feed inventory data for climate assessment of animal-based food products consumed in Sweden.

**Lynn Kleinjan** - Department of Biological and Environmental Sciences

Title: Environmental and social determinants of elephant walking speed in conflict-prone areas. Find the thesis [here](#)

### Louis Fiorina

Department of Marine sciences

Title: AI-Powered monitoring of European lobsters in West Sweden.

### Mateusz Benkowski

Department of Marine sciences

Title: Quantifying the magnitude of biodiversity as a metric of a habitat's resistance to colonization by non-indigenous species (NIS).

## Master students continued

### Paulina Izabela de Jesús Álvarez

Department of Marine sciences

Title: Studying biodiversity and distribution of benthic vegetation with deep learning methods.

### Sofia Glad

Department of Economy and Society

Title: Tvååkers mosse - A collaborative project in the development of a multifunctional landscape. Find the thesis [here](#)

### Varsha Rai Chalise

Department of Biological and Environmental Sciences (and Natural History Museum)

Title: Diet Variation of insectivorous bats in Slottsskogen, Gothenburg.

## Bachelor students

### Amanda Ohldin

Title: The composition of macroalgae in Swedish eelgrass meadows: eDNA tracking and climate-change influences. Find the thesis [here](#)

### Anton Nyström

Department of Biological and Environmental Sciences

Title: How vegetation types and human boundaries influence elephant habitat selection: A study of male *Loxodonta africana* in northeast Botswana. Find the thesis [here](#)

### Arvid Dahlquist

Department of Biological and Environmental Sciences

Title: Estimating population trends and breeding-site fidelity in the Baltic grey seal (*Halichoerus grypus balticus*). Find the thesis [here](#)

### Klara Persgård

Department of Biological and Environmental Sciences

Title: How microclimate affects litter decomposition in the Arctic region. Find the thesis [here](#)

### Mina Karlsson

Department of Biological and Environmental Sciences (& Nordens ark)

Title: The effect of fire and grazing on the establishment of herbaceous plants in restored pastures Find the thesis [here](#)

### Moa Lydahl

Department of Biological and Environmental Sciences

Title: Which shoreline vegetation contributes organic matter to coastal sediments? Carbon sinks and sources, degradability, and eDNA tracing. Find the thesis [here](#)

## Bachelor students continued

### Rasmus Lingnau Amossen

Department of Biological and Environmental Sciences

Title: Probabilistic mapping of rhodolith beds using ensemble machine learning: A case study of rhodolith distribution in Scandinavia. Find the thesis [here](#)

### Simon Hermansson

Department of Biological and Environmental Sciences

Title: Hur vill vedelevende solitärbin bo? Rekommendationer för utformning av bihotell. Find the thesis [here](#)

### Walter Gulis

Department of Biological and Environmental Sciences

Title: Testing local adaptation to microclimate in tundra plants: A common-garden experiment with temperature treatments. Find the thesis [here](#)



**Photo:** Group of male African savanna elephants (*Loxodonta africana*) in the Makgadikgadi Pans National Park, Botswana (Photo credit Kate Evans)

## COMMUNICATIONS

Now in its ninth year, the GGBC continued to be active in public engagement through the social media platform; [Facebook](#) (1193 followers, an increase of 3%), the majority of our followers are female (62%) and more than half (56%) are Swedish, with the majority of those, 26% from the Gothenburg region. We ceased to be active on the platform X/Twitter as we decided it was no longer a platform that aligned with our values and ethics. We look forward to engaging on another platform in 2026. Our newsletters were sent out monthly (except for March and July). We saw a 2% increase in our newsletter subscribers to a total of 758. Our opening rate of the newsletter was, on average, 35%.



### GGBC in the media 2025

Gothenburg Global Biodiversity Centre (GGBC) has featured in the Swedish media 10 times in 2025, taking part in the societal dialogue regarding biodiversity conservation and promotion and members. In addition, GGBC featured in two University of Gothenburg press releases.



## GGBC members in the media 2025

In addition, GGBC members continue to highlight the importance of biodiversity and the urgency to conserve it through media interviews and mentions. Here are some examples of GGBC member appearances in the media during 2025:

**Stina Weststrand** and **Åsa Kruger** continue to educate with their award-winning podcast. [Botaniska trädgårdspodden](#).

**Helena Wiklund & Thomas Dahlgren**. Djuphavens märkliga djur och en kompost för ekoxar. P1 Naturmorgon, [Sverige Radio](#)

**Kennet Lundin**. Delfin i Göteborgs hamn. P4 Göteborg, [Sverige Radio](#)

**Kennet Lundin**. Im Bauch des Blauwals. [Jetzt: Am Plus](#)

**Rhys Lemon**. Dr. Rhys Lemoine, Megafauna Rewildlife Scientist. [The Weekly Anthropocene](#)

**Linda Thelin**. Interview about Bat Masters. P4 Göteborg, [Sverige Radio](#)

**Mats Havström**. Botaniska trädgårdar hinner inte samla in alla hotade arter. Vetenskapsradion, [Sverige Radio](#)

**Stina Weststrand**. Artkunskap som tillhörde allmänbildningen försvinner. Godmorgon världen, [Sverige Radio](#)

**Ted Von Proschwitz**. Parksäckan kan bli ny mördarsnigel – experten tar hjälp av skolelever i kartläggning. [VGR Fokus](#)

**Henrik Sjöman**. Thinking in Tree Time. [Royal Botanic Gardens Kew](#)

**Stina Weststrand**. Här växer unik fröbank fram – ska bevara vilda växter. P4 Göteborg [Sverige Radio](#)

**Leon Green**. Här dyker den tropiska fisken guldmakrill upp i Lysekil: "Helt unikt". [SVT](#)

**Rhys Lemon**. Overkill! The ongoing end of the megafauna with Dr Rhys Lemoine. [The History of Being Human](#)

**Helen Ekvall**. Betornas vilda släkting – och om vår växtblindhet. P1 Naturmorgon, [Sverige Radio](#)

**Kate Evans**. Kate uppfyller ett livslångt löfte till världens elefanter. Vetenskapsradion, [Sverige Radio](#).

**Alexandre Antonelli**. Amazonas riskerar att nå klimatets tippningspunkt. Rapport, [SVT](#)

**Helen Ekvall**. När kunskapen om arter försvinner ur skolan – så försöker forskare vända trenden. Vetenskapsradion, [Sverige Radio](#)

**Helen Ekvall & Stina Weststrand**. Naturpodden: Helen Ekvall och Stina Weststrand sår kunskapsfrön. [Natursidan](#)

## GGBC in the media 2025 - Continued

**Varsha Rai Chalise & Magnus Gelang**. Forskare kartlägger fladdermössen i Slottsskogen. [Vårt Göteborg](#)

**Marie Stenseke**, Vilse i framtidens landskap – att hitta hem i en förvandlad värld, [Sveriges Radio](#)

In addition, GGBC members featured in 24 University of Gothenburg press releases.

## ORGANISATION

The Gothenburg Global Biodiversity Centre (GGBC) brings together researchers, practitioners, and partner organisations to accelerate biodiversity knowledge and strengthen the connection between science and society. Hosted by the Department of Biological and Environmental Sciences at the University of Gothenburg, the Centre unites 19 partner institutions across western Sweden in a collaborative effort to advance research, education, and outreach on biodiversity. With a global outlook and an expanding community of experts, GGBC continues to promote cutting-edge research, support evidence-based decision-making, and engage the public in understanding the vital importance of biodiversity for a sustainable future.

The GGBC was inaugurated in 2017 and is hosted by the Department of Biological and Environmental Sciences at the University of Gothenburg, with three years of funding from the Faculty of Science and Technology. GGBC was externally evaluated in 2019 and was subsequently granted its second period of funding for three years (2020-2022) from the Faculty of Science and Technology. An external evaluation of the GGBC's second funding period was received in February 2022 and faculty funding was granted for an additional 3-year period (2023-2025). This year we again secured an additional 3-year support from the Faculty of Science and Technology.

The GGBC now consists of 19 partner organisations, as we welcomed **Borås Djurpark** in December. Of our 19 partner organisations 12 are from outside of the University of Gothenburg. A full partnership involves a written agreement and an annual financial contribution to the centre. During 2023-2025 GGBC was led by Director Jenny Klingberg. The centre has a management team that meets regularly to plan and coordinate activities related to the activity plan, budget, governing documents, and mission.



## Board members

Each partner organisation is represented by a member on the steering board. GGBC has a highly active steering board which consisted of the following members in 2025:

**Marie Stenseke** (Chair of the Board), Department of Economy and Society, University of Gothenburg  
**Åsa Arrhenius**, Department of Biological and Environmental Sciences, University of Gothenburg  
**Robert Björk**, Department of Earth Sciences, University of Gothenburg  
**Paula Bäckman**, Naturbruksförvaltningen, VGR  
**Viktor Elliot**, Department of Business Administration, University of Gothenburg  
**Mats Havström**, Gothenburg Botanical Garden  
**Mats Höggren**, Nordens Ark  
**Björn Källström**, Maritime Museum and Aquarium  
**Mattias Lindholm**, Väst kuststiftelsen  
**Eskil Mattson**, IVL Swedish Environmental Research Institute  
**Matthias Obst**, Department of Marine Sciences, University of Gothenburg  
**Ulrika Engström Palme**, Division of Environmental Systems Analysis, Chalmers University of Technology  
**Marina Panova**, Centre for Sea and Society, University of Gothenburg  
**Claes Gustafsson**, Herbarium GB, University of Gothenburg  
**Håkan Sigurdsson**, Universeum  
**Helen Sköld**, Havets Hus  
**Linda Thelin**, Slottsskogen Zoo  
**Stefan Örgård**, Gothenburg Natural History Museum  
**Jenny Klingberg**, GGBC Director (adjunct steering board member)



European beech (*Fagus sylvatica*). Credit. Kate Evans

## GGBC Partner organisations 2025

University of Gothenburg  
[Centre for Sea & Society](#)  
[Department of Biological & Environmental Sciences](#)  
[Department of Business Administration](#)  
[Department of Earth Sciences](#)  
[Department of Economy & Society](#)  
[Department of Marine Sciences](#)  
[Herbarium GB](#)  
 Chalmers University of Technology  
[Department of Technology, Management & Economics](#)

[Gothenburg Botanical Gardens](#)

[Gothenburg Museum of Natural History](#)

[Havets Hus](#)

[IVL - Swedish Environmental Research Institute](#)

[Maritime Museum and Aquarium](#)

[Naturbruksförvaltningen at Region Västra Götaland](#)

[Nordens Ark](#)

[Slottsskogens Zoo](#)

[Universeum](#)

[Väst kuststiftelsen](#)

[Borås Djurpark](#) (joined in December 2025)

Several of our partners welcome visitors from the public, attracting over six million visitors each year (Table 1). Through these partner visits, schools and members of the public can directly engage with and learn about biodiversity found in Western Sweden and globally and is thus a key means by which GGBC communicates with and educates the public about biodiversity.

Partner organisation	Visitor numbers	
	2024	2025
Gothenburg Botanical Garden	608 000	620 000
Gothenburg Museum of Natural History	210 700	200 735
Havets Hus	64 000	60 597
Nordens Ark	100 000	85 000
Slottsskogen Zoo	4 300 000	4 300 000
Maritime Museum and Aquarium	269 000	228 827
Universeum	550 000	559 110
<b>TOTAL</b>	<b>&gt;6 101 700</b>	<b>&gt; 6 054 269</b>

Table 1: Number of visitors in 2024 & 2025 to GGBC partner organisations.

## GGBC employees 2025

In 2025, five people were employed with GGBC, most of them as part of a position:

- Dr Jenny Klingberg, Director (45% GGBC and 5% SamBio)
- Dr Kate Evans, GGBC Project Coordinator (60%)
- Ms Grazzia Matamoros, MSc, GGBC Project Coordinator (30%)
- Dr Anna-Lisa Wrangé, Sambio Coordinator (100%)
- Mr Mikael Östblom, Sambio Coordinator (50%)

## GGBC membership

GGBC membership is available to any person employed or studying at one of the GGBC partner organisations, who is working with biodiversity-related issues. In exceptional cases, a person not working for one of these organisations, but with close collaborations with GGBC members and partners, may also be admitted as a member.

In 2025, we undertook a substantial and comprehensive review of our membership scheme. As part of this process, we introduced three membership categories: Full, Associate, and Student, each with clearly defined benefits and expectations.

All members were contacted and invited to complete a new membership application, which includes additional questions designed to help us better understand our network and identify opportunities for future collaboration. Members who no longer wished to remain part of the GGBC were also given the opportunity to complete a cancellation form. We welcomed 35 new members in 2025.

## Honorary membership

In 2018, the GGBC created an 'honorary membership'. This membership category is awarded to those that have contributed significantly to biodiversity research or popularisation of biodiversity.

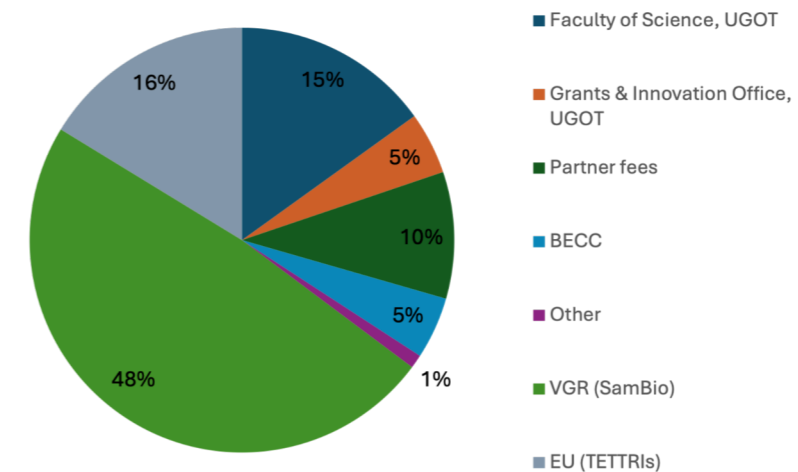
The honorary membership has been awarded to:

- 2025: Dr Fredrik Moberg
- 2024: Dr Brigitte Baptiste
- 2021: Dr Paul Jepson
- 2020: Professor Sandra Diaz
- 2020: Dr Anne Laurigauderie
- 2019: Professor Susanne Åkesson and Marc Abrahams
- 2018: Professor Edward O. Wilson
- 2018: Sir David Attenborough
- 2018: Professor Rosemary Grant
- 2018: Professor Peter Grant

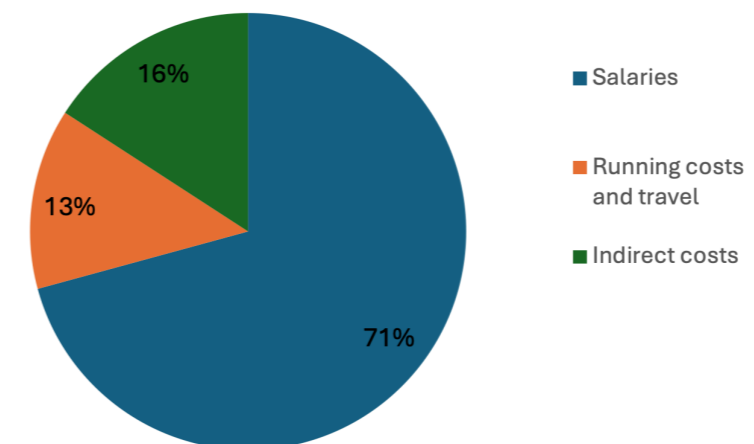
## GGBC Economic report 2025

The total costs for 2025 amounted to **3 329 825 SEK** which to the majority covered salaries for the director and project coordinators. The costs are partly covered by funding from the Faculty of Science and Technology at the University of Gothenburg and partner fees. Further funding comes from the strategic research area Biodiversity and Ecosystems services in a changing climate (BECC) supporting the work with the Swedish Biodiversity symposium and interdisciplinary workshops. Also, project funding from the Region Västra Götaland (VGR) for the SamBio project and funding for the EU project TETTRIs partly covered costs at GGBC during 2025. Finally, further collaboration with the science centre Universeum was funded through the University of Gothenburg's Grant and Innovation Office.

### Representative income 2025



### Costs 2025



## Funders & Partners

The GGBC simply would not exist without the support of our funders & partners.

Thank you.



## APPENDIX

### Papers published by members in 2025

In 2025, GGBC members produced over 140 scientific publications, 143 of which are listed below. Publications from 2017 onwards were cited over 6,000 times in 2025.

- Ahlman Y, Rasim J, Strömberg S, **Waller RG**. Female gametogenic processes of the scleractinian coral *Desmophyllum pertusum* just prior to spawning from the Tisler Reef, Norway. *Invertebrate Reproduction & Development* 2025;1-5.
- Ainsworth AM, Blades B, **Dombrowski A**, et al. Ovary smuts in seed capsules of British chickweeds. *Field Mycology* 2025;26(2):41-48.
- Alzate A, Rozzi R, .....**Hill A, CD**, et al. Evolutionary age correlates with range size across plants and animals. *Nature Communications* 2025;16(1):7894.
- Antonelli A**, Chater C, Strassburg B et al. Trade tariffs could worsen deforestation in South America. *Nature* 2025;640(8060):881-81.
- Antonelli A**, Teisher JK, Smith RJ, et al. The 2030 declaration on scientific plant and fungal collecting. *Plants, People, Planet* 2025;7(1):11-22.
- Arno J, Morel J, Rasaminirina F, .....**Silvestro D, Antonelli, Alexandre**, et al. A pipeline to compile expert-verified datasets of digitised herbarium specimens for automated plant identification to accelerate taxonomy. *Plants, People, Planet* 2025.1-15.
- Aslaksen I, Bryn A, Clemmensen K, ....**Palme, U**, et al. Afforestation on Nordic grasslands: Trade-offs and synergies for climate mitigation, biodiversity, and ecosystem services. *Global Environmental Change Advances*. 2025;4.
- Barrio IC, Vuorinen KE,.... **Björnsdóttir K**. et al. Emerging priorities in terrestrial herbivory research in the Arctic. *Arctic Science* 2025;11:1-26.
- Bauld J, Lehmann D, **Bussière LF**, et al. Rare Long-Term Data Reveal the Seasonal Dietary Plasticity of Mandrills (*Mandrillus sphinx*) in Response to Fruiting Tree Phenology. *American Journal of Primatology* 2025;87(3)
- Beckmann LM, **Waller RG**. Observation of polyp bailout after stress exposure in *Primnoa pacifica*. *Coral Reefs* 2025;44(3):1017-22.
- Blanco F, Lazagabaster IA, Sanisidro Ó ... **Silvestro D et al**. Two major ecological shifts shaped 60 million years of ungulate faunal evolution. *Nature Communications* 2025;16(1):4648.
- Brancalion PH, Hua F,....**Antonelli A**, et al. Moving biodiversity from an afterthought to a key outcome of forest restoration. *Nature Reviews Biodiversity* 2025;1(4):248-61.
- Cabral A, Bender IM, Couvreur TL, **Faurby S**. et al. Seed-dispersing vertebrates and the abiotic environment shape functional diversity of the pantropical Annonaceae. *New Phytologist* 2025;246(5):2263-79.
- Cabral A, Bender IMA,.... **Faurby, S**, et al. (2025), Seed-dispersing vertebrates and the abiotic environment shape functional diversity of the pantropical Annonaceae. *New Phytol*, 246: 2263-2279.
- Cameron RA, von **Proschwitz T**. Variation in metapopulations of the polymorphic land snail *Cepaea nemoralis* (L.) in two small towns beyond its natural range. *Folia Malacologica* 2025;33(4):258-64.
- Carroll D**, Ahola MP, Carlsson AM, et al. Declining harbour seal abundance in a previously recovering meta-population. *PLOS ONE* 2025;20(6):e0326933.

- **Carroll D**, Infantes E, Pagan EV, Harding KC. Approaching a population-level assessment of body size in pinnipeds using drones, an early warning of environmental degradation. *Remote Sensing in Ecology and Conservation* 2025;11(2):156-71. **Carroll, D., J. Harvey-Carroll**, T.Härkönen, and K. C.Harding. Harbor Seals (*Phoca vitulina*) Sighted 34 Years After Their Inclusion in a Capture-Mark-Recapture Study. *Marine Mammal Science* 2025; 42(1): e70073.
- Chagas BM, Daly M, **Waller R**, Stampar SN. Notes on the reproductive biology of Edwardsiella (Cnidaria, Actiniaria): new insights into Edwardsiella loveni. *Invertebrate Reproduction & Development* 2025;69(3):156-62.
- Chen SC, **Antonelli A**, Huang X, Wei N, Dai C, Wang QF. Large seeds as a defensive strategy against partial granivory in the Fagaceae. *Journal of Ecology* 2025;113(3):598-607.
- Christodoulou, M., Derycke, S., Beentjes, K., Hillewaert, H., Laakmann, S., **Lundin, K.**, Kam Khodami, S., Maes, S., Reiss, H., Uhlir, C., Van den Bulcke, L., Van der Hoorn, B., Backer, A., Martinez Arbizu, P. 2025. A taxonomically reliable DNA barcode reference library for North Sea macrobenthos. *Scientific Data* 2025;12:1198.
- Clegg R, Azevedo L, Martinez-Ugarteche MT...**Antonelli A**. et al. Plant biogeography of rock outcrops in South American tropical lowlands. *Frontiers of Biogeography* 2025;18:e145659.
- Colli-Silva M, Pérez-Escobar OA, Ferreira CD...**Antonelli A**. Taxonomy in the light of incongruence: An updated classification of Malvales and Malvaceae based on phylogenomic data. *Taxon* 2025;74(2):361-85.
- Cooper RB, Allen BJ, **Silvestro D**. DeepDiver—a software for deep learning estimation of palaeodiversity from fossil occurrences. *Methods in Ecology and Evolution* 2025;16(9):1923-34.
- Correa SB, Coronado-Franco KV, Jézéquel C...**Damasco G**.et al. Floodplain forests drive fruit-eating fish diversity at the Amazon Basin-scale. *Proceedings of the National Academy of Sciences* 2025;122(3)
- Crous P, Akram W, Albuquerque G...**Larsson, E**. et al. Fungal Planet description sheets: 1868–1920. *Persoonia-Molecular Phylogeny and Evolution of Fungi* 2025.
- Crous P, Catcheside D, Catcheside P...**Larsson, E**. et al. Fungal Planet description sheets: 1781–1866. *Persoonia: Molecular Phylogeny and Evolution of Fungi* 2025;54:327.
- Cruz EN, **Faurby S**, Sawaya RJ. Did the climate changes cause the extinction of the Late Pleistocene gomphotheres in South America? *Zoologia (Curitiba)* 2025;42
- da Silva AC, Colli-Silva M, **Antonelli A**, Fidanza K. Regionalization of neotropical aquatic plants. *Revista del Jardín Botánico Nacional* 2025:59-59.
- **Daraghmeh N**, Exter K, **Pagnier J**, et al. A Long-Term Ecological Research Data Set From the Marine Genetic Monitoring Program ARMS-MBON 2018–2020. *Molecular Ecology Resources* 2025;25(4)
- Darras KF, Rountree RA, Van Wilgenburg SL...**Antonelli A**. et al. Worldwide soundscapes: a synthesis of passive acoustic monitoring across realms. *Global Ecology and Biogeography* 2025;34(5)
- Davis CC, Sessa E, Paton A, **Antonelli A**, Teisher JK. Guidelines for the effective and ethical sampling of herbaria. *Nature Ecology & Evolution* 2025;9(2):196-203.
- Ding W, **Silvestro D**, Onstein RE, Wu M, Zhou Z, Xing Y. The stepwise rise of angiosperm-dominated terrestrial ecosystems. *Biological Reviews* 2025;100(5):2131-49.
- do Nascimento NF, Quaresma TF, **Batista R**, Aleixo A. Revealing hidden diversity: molecular insights into a monotypic Amazonian hummingbird species. *Journal of Ornithology* 2025;166(4):1057-70.
- Dornelas, M., Antão, L.H., Bates, A.E., Brambilla V...**Bjorkman A**. et al. BioTIME 2.0: Expanding and Improving a Database of Biodiversity Time Series. *Global Ecol Biogeogr*, 2025; 34
- Eeraerts M, **Osterman J**, Batáry P, et al. Global synthesis of apple pollination research highlights general pollen limitation and positive contributions of wild bees compared to honeybees. *Journal of Applied Ecology* 2025;62(10):2487-501.
- Eeraerts M, Siopa C, **Osterman W**, **Osterman J**, Chabert S, Verheyen K. The global contribution of wild insect and honeybee visitation to crop pollination success is asymptotic. *Global Ecology and Biogeography* 2025;34(7):e70088.
- Fälthammar de Jong G, Gallois E, Boyle JS, Grenier M, Myers-Smith IH, **Bjorkman A**. Time-lapse cameras bridge the gap between remote sensing and in situ observations of tundra phenology. *Methods in Ecology and Evolution* 2025;16(12):2919-30.
- Fälthammar de Jong, G., Gallois, E., Boyle, J. S., Grenier, M., Myers-Smith, I. H., & **Bjorkman, A.** (2025). Time-lapse cameras bridge the gap between remote sensing and in situ observations of tundra phenology. *Methods in Ecology and Evolution* 2025;16:2919–2930.
- **Faurby S**, Sandel B. Richness patterns in vertebrates are robust to the Linnean and Wallacean shortfalls. *Ecography* 2025;(7):e07467.
- Fijen TP, Eeraerts M, **Osterman J**, et al. Crop diversification for pollinator conservation. *Landscape Ecology* 2025;40(1):19.
- Fiorillo BF, Paganini Faggioni G, **Provete DB**. The utility of an index of biotic integrity for predicting terrestrial frog species diversity in a tropical forest. *Studies on Neotropical Fauna and Environment* 2025:1-10.
- Fiorillo, B. F., Paganini Faggioni, G., & **Provete, D. B.** The utility of an index of biotic integrity for predicting terrestrial frog species diversity in a tropical forest. *Studies on Neotropical Fauna and Environment* 2025:1–10.
- Gaboriau T, Tobias JA, **Silvestro D**, Salamin N. Exploring the macroevolutionary signature of asymmetric inheritance at speciation. *Systematic Biology* 2025;74(2):267-81.
- García Criado M, Barrio IC, Speed JD...**Bjorkman AD**... **Björk RG**, **Björkman M**. et al. Borealisation of Plant Communities in the Arctic Is Driven by Boreal-Tundra Species. *Ecology letters* 2025;28(9):e70209.
- García Criado M, Myers-Smith IH, **Bjorkman AD**, et al. Plant diversity dynamics over space and time in a warming Arctic. *Nature* 2025;642(8068):653-61.
- Gould E, Fraser HS, Parker TH... **Brussière, L.** et al. Same data, different analysts: variation in effect sizes due to analytical decisions in ecology and evolutionary biology. *BMC biology* 2025;23(1):35.
- Hähn GJ, Damasceno G, Alvarez-Davila E...**Bjorkman A**. et al. Global decoupling of functional and phylogenetic diversity in plant communities. *Nature Ecology & Evolution* 2025;9(2):237-48.
- **Harvey-Carroll J**, **Carroll D**, Crespo-Picazo JL, García-Párraga D, March D. Using accelerometers for tracking loggerhead and green sea turtle behaviour. *Animal Biotelemetry* 2025;13(1):20.
- **Harvey-Carroll J**, **Carroll D**, Ingram DJ, et al. Trend or coincidence? The removal of pangolin tongues threatens rehabilitation efforts. *Oryx* 2025;59(4).
- **Harvey-Carroll J**, Menéndez-Blázquez J, Crespo-Picazo JL, Sagarminaga R, March D. Unlocking sea turtle diving behaviour from low-temporal resolution time-depth recorders. *Scientific Reports* 2025;15(1):19934.
- **Harvey-Carroll J**, **Carroll D**, Trivella C-M, Connelly E. A framework for the ethical use of animal-borne devices in post-release monitoring following rehabilitation. *Wildlife Biology* 2025:e01404.
- Hibbett D, Nagy LG, **Nilsson RH**. Fungal diversity, evolution, and classification. *Current Biology* 2025;35(11):R463-R69.

- Humphreys AM, Fisher DO, Witts NA, **Silvestro D, Antonelli A.** Harnessing the benefits of herbarium specimen digitisation for inferring recent and ongoing plant extinctions. *New Phytologist* 2025.
- Inteca G, Silva I, **Farooq H.** The first record of green turtle (*Chelonia mydas*) nesting attempt in Pemba, Cabo Delgado, northern Mozambique. *Journal of the Marine Biological Association of the United Kingdom* 2025;105
- Jaramillo PA, Russo SE, Duque A, Castaño N, **Zuleta D.** Marked tree demographic variation along subtle elevation differences partially explains species' habitat associations in an Amazonian forest. *Journal of Ecology* 2025;113(10):2860-74.
- Jessop A, Steyaert M, **Daraghmeh N, Pagnier J.** et al. (2026). A review of autonomous reef monitoring structures (ARMS) for monitoring hard-bottom benthic biodiversity. *Methods in Ecology and Evolution* 2025;17: 435–455.
- Jonäll K, Baeckström Y, **Elliot V,** Arvidsson S. The biodiversity–finance nexus: a future research agenda. *Current Opinion in Environmental Sustainability.* 2025;72: 101504.
- Jucker T, Fischer FJ, Chave J... **Mattson E.** et al. The global spectrum of tree crown architecture. *Nature Communications* 2025;16(1):4876.
- Kessous IM, **Farooq H,** Testo W, et al. New insights into the classification, diversification, and evolutionary dynamics of bromeliads. *Botanical Journal of the Linnean Society* 2025;208(3):242-55.
- Kinnby A, Robert C, Havenhand ... **Bussière L, de Wit P.** The roles of plasticity and selection in rapid phenotypic changes at the Pacific oyster invasion front in Europe. *Molecular Ecology* 2025;34(23)
- Kocáková K, **Silvestro D,** Mathes GH, et al. Global extinction events and persistent age-dependency in sharks and rays over the past 145 million years. *Proceedings of the Royal Society B: Biological Sciences* 2025;292(2061).
- **Larsson K-H,** Spirin V, Ryvarden L, **Larsson E.** Reclassification of eleven corticioid basidiomycetes with nine typifications. *Fungal Systematics and Evolution* 2025;16(1):1-28.
- Leadbitter, D., Aebischer, N. J., Auchterlonie, N. A., Benton, T. G., Froehlich, H. E., Hall, S., ... **Palme, U.,** Hilborn, R. (2025). Biodiversity Consequences of Replacing Animal Protein From Capture Fisheries With Animal Protein From Agriculture. *Reviews in Fisheries Science & Aquaculture.*2025;1–13.
- **Lemoine RT,** Buitenwerf R, **Faurby S,** Svenning JC. Phylogenetic Evidence Supports the Effect of Traits on Late–Quaternary Megafauna Extinction in the Context of Human Activity. *Global Ecology and Biogeography* 2025;34(7):e70078.
- **Lemoine, R. T.,** R.Buitenwerf, S.Faurby, and J.-C.Svenning. Phylogenetic Evidence Supports the Effect of Traits on Late–Quaternary Megafauna Extinction in the Context of Human Activity. *Global Ecology and Biogeography* 2025;34(7)
- Li P-W, Lu Y-B, **Antonelli A,** et al. Sliding-window phylogenetic analyses uncover complex interplastomic recombination in the tropical Asian-American disjunct plant genus *Hedyosmum* (Chloranthaceae). *The New phytologist* 2025;246(6):2405-15.
- Linnér BO, Porsani J, Chibwe B...**Antonelli A.** et al. Digitalising biodiversity: Exploring perceptions on risks and opportunities. *Plants, People, Planet* 2025.
- Liu Q, Rogers AD, Roch C... **Waller RG.** et al. Critical knowledge gaps in the conservation and restoration of cold–water corals. *Restoration Ecology* 2025: e70286.
- Liu Z, Colombo S, Rancilhac L... **Olsson U.** et al. Weak Nuclear Divergence Despite Pronounced Mitochondrial Divergence Within a Widespread Desert-Inhabiting Palearctic Lark (Aves: Alaudidae). *Zoologica Scripta* 2025.1–16.
- Liu Z, Colombo S, Rancilhac L... **Olsson U.** et al. Weak Nuclear Divergence Despite Pronounced Mitochondrial Divergence Within a Widespread Desert-Inhabiting Palearctic Lark (Aves: Alaudidae). *Zoologica Scripta* 2025.1–16.
- MacDonald A, Ziehmer B, Kitchener A, **Gelang M,** Åblad B, Lintonsson R, von Pückler K, Schaub S., Kiefer I. Ito M. & Schwarz T. A computed tomographic study of the incisor teeth of male *Babyrousa* spp. *Journal of veterinary dentistry,* 2025,43(2).
- Mangan RM, Tinsley MC, Ferrari E, Polanczyk RA, **Bussière LF.** Crop diversity induces trade-offs in microbial biopesticide susceptibility that could delay pest resistance evolution. *PLoS pathogens* 2025;21(5)
- Mangan RM, Tinsley MC, Ferrari E, Polanczyk RA, **Bussière LF.** Crop diversity induces trade-offs in microbial biopesticide susceptibility that could delay pest resistance evolution. *PLoS Pathog* 2025; 21(5)
- Marline L, Ranaivoson NAS, Smith RJ... **Antonelli A.** et al. Advancing bryophyte research and conservation: a case study on Madagascar. *Annals of Botany* 2025;136(1):1-14.
- McGann M, Holzmann M, Bouchet VM...**Polovodova Asterman I.** et al. Analysis of a human-mediated microbioinvasion: the global spread of the benthic foraminifer *Trochammina hadai* Uchio, 1962. *Journal of Micropalaeontology* 2025;44(2):275-317.
- Melo–Ximenes AAd, **Batista R,** Corvalán LCJ. et al. First Assembly of a Draft Genome of the Critically Endangered Northern Muriqui (*Brachyteles hypoxanthus*, Primates, Atelidae) Including Non–Invasive Genotyping Strategies for the Species. *Ecology and Evolution* 2025;15(8)
- Menezes LB, Severgnini MR, Pezzuti TL, Garey MV, **Provete DB.** The tadpole of *Chiasmocleis altomontana* (Anura: Microhylidae). *PEERJ* 2025;13
- **Mesbah M,** Chatelain C, El Mokni R, Loup C. Nomenclatural revision of the *Silene canopica* complex (Caryophyllaceae) across Middle East to the Maghreb region. *Flora Mediterranea* 2025;35.
- Meurville M-P, **Silvestro D,** LeBoeuf AC. Ecological change and conflict reduction led to a social circulatory system in ants. *Communications biology* 2025;8(1):246.
- Miraldo A, Sundh J, Iwazkiewicz-Eggebrecht E.... **Björkman MP,** et al. Data of the Insect Biome Atlas: a metabarcoding survey of the terrestrial arthropods of Sweden and Madagascar. *Scientific data* 2025;12(1):835.
- Murray S. A. Thompson, Izaskun Preciado, Federico Maioli, Valerio Bartolino, **Andrea Belgrano** et al. (2025) Fish functional groups of the North Atlantic and Arctic oceans. *Earth System Science Data* 2025;17(6): 2447–2462, 2025
- Neal L, **Wiklund H,** Glover AG. Description of new species *Macellicephaloides veronikae* sp. n.(Polynoidae, Annelida) from the Amundsen Sea, Southern Ocean. *Polar Biology* 2025;48(4):107.
- **Nilsson CL, Faurby S,** Burman E, Germishuys J, Obst M. Applying Deep Learning to Quantify Drivers of Long–Term Ecological Change in a Swedish Marine Protected Area. *Ecology and Evolution* 2025;15(9):e72091.
- **Nilsson H,** Kvarnemo L, Näslund J, et al. Sveriges biologer bör bidra mer till Wikipedia. 2025.
- **Nobles EC.** The ethical foundations of biodiversity metrics. *Current Opinion in Environmental Sustainability* 2025;72:101503.
- Novo NM, Martin GM, González Ruiz LR, **Tejedor MF.** The Earliest Known Radiation of Pitheciine Primates. *American Journal of Primatology* 2025;87(5): e70040.
- Olivares I, **Faurby S,** Cámara-Leret R, Pigot AL. The likelihood of sympatric speciation and morphological divergence in plants. *Proceedings of the National Academy of Sciences* 2025;122(34):e2508958122.
- Olofsson E, ElliotV, Johansson H. Företags engagemang och kunskap om biologisk mångfald i Västra Götaland EN STUDIE AV SMÅ OCH MEDELSTORA FÖRETAGS ARBETE MED BIOLOGISK MÅNGFALD. 2025

- **Osterman WH, Hagan JG**, Whitton J, **Bjorkman AD**. The ecology of polyploid establishment and exclusion, with implications for polyploid biogeography. *New Phytologist* 2025;246(1):47-60.
- Oswald CB, Silveira FA, Cornelissen T,... **Guedes TB** et al. Biogeography and evolution of the vertebrate fauna in campo rupestre, a megadiverse Neotropical montane open ecosystem. *Biological Journal of the Linnean Society* 2025;145(3)
- **Pagnier J**, Allcock L, Cancio I, et al. A long-term ecological research dataset from the marine genetic monitoring programme ARMS-MBON 2020-2021. *Biodiversity Data Journal* 2025;13
- **Pagnier, J., Daraghme, N. & Obst, M.** Using the long-term genetic monitoring network ARMS-MBON to detect marine non-indigenous species along the European coasts. *Biological Invasions* 2025;27, 77.
- Pantoja PO, Vieira LD, de Lima NE, Sobral-Souza T, **Bacon CD**, Collevatti RG. Genome Dynamics of Adaptation and Introgression in Neotropical Palms. *Journal of Biogeography* 2025;52(2):376-91.
- Partoft H **Bussi re LF**, Massimiliano Cardinale,  sa Strand, Ane T Laugen, Estimating a length-at-age relationship for an invasive bivalve with density-determined plastic growth, *Journal of Molluscan Studies* 2025; 91(2)
- Patchett A, R tting L, R tting T, Bod  S, Hallin S, Juhanson J, Stange FC, **Bj rkman MP**, Boeckx P, Rosqvist G, and **Bj rk RG**. The role of mycorrhizal type and plant dominance in regulating nitrogen cycling in Oroarctic soils. *Biogeosciences* 2025; 22 (22): 6841-6860.
- Paton AJ, Ameka GK, **Antonelli A**, et al. Life after herbarium digitisation: Physical and digital collections, curation and use. *Plants, People, Planet* 2025.
- P rez-Granados C, Funosas D, Morant J, et al. Optimization of passive acoustic bird surveys: a global assessment of BirdNET settings. *Ibis* 2025.
- Phelps LN, Razanatsoa E, Davis DS...**Antonelli, A.** et al. Advancing transdisciplinary research on Madagascar's grassy biomes to support resilience in ecosystems and livelihoods. *Ecological Monographs* 2025;95(2)
- Phillips O, Baker T....**Damesco, G.**... et al. Floodplain forests drive fruit-eating fish diversity at the Amazon Basin-scale. *Proceedings of the National Academy of Sciences* 2025;122(3).
- Phoenix GK, Bjerke JW, **Bj rk RG**, et al. Browning events in Arctic ecosystems: Diverse causes with common consequences. *PLOS Climate* 2025;4(1)
- Pleijel H, **Klingberg J, Sj man H**, Wallin G. Leaf age affects mercury accumulation in evergreen plants. *Water, Air, & Soil Pollution* 2025;236(2):115.
- **Polovodova Asteman, I.**, Jaffr , E., Olejnik, A., Holzmann, M., McGann, M., Nordberg, K., Pavard, J.-C., R sel, D., and Schweizer, M.: Leisure boat harbours, hidden alien species, and pollution: a case study of Hinsholmskilen harbour (Gothenburg, Sweden), *J. Micropalaeontol.* 2025; 44: 119–143
- Przelomska NAS, Padilla F,  vila FA...**Antonelli, A.** et al. Plant medicine, stimulant and cultural keystone: applying a herbariomics approach to explore the adoption of the coca plant by humans. 11th Meeting of the International Society for Biomolecular Archaeology (ISBA); 2025.
- **Quatela AS**, Cangren P, de Lima Ferreira P....**Bacon CD...Oxelman B.** et al. Phylogenetic relationships and the identification of allopolyploidy in circumpolar *Silene* sect. *Physolychnis*. *American Journal of Botany* 2025;112(6)
- Quintero I, Andr oletti J, **Silvestro D**, Morlon H. Loss of macroevolutionary species fitness explains the rise and fall of clades. *Nature Ecology & Evolution* 2025:1-12.
- Rabeschini, G., **Persson, U.M.**, West, C. et al. Choosing fit-for-purpose biodiversity impact indicators for agriculture in the Brazilian Cerrado ecoregion. *Nat Commun* 2025; 16(1799)**Rafajlovi  M.** Digest: *The evolution of self-fertilization following dispersal in an androdioecious species*: Oxford University Press, 2025.
- Rentier ES, Mottl O, **Pacheco-Ria o LC**, et al. Global variability in LGM cooling amongst paleoclimate datasets affects biome reconstructions in mountains. *Frontiers of Biogeography* 2025;18
- Ribas CC, Sawakuchi AO, de Almeida RP...**Batista R.** et al. The role of rivers in the origin and future of Amazonian biodiversity. *Nature Reviews Biodiversity* 2025;1, 14–31
- Richard-Bollans A, Jan-Smith E, **Silvestro D**, Howes MJR. Beyond phylogeny: phytochemical diversity as a unique metric for biodiversity in the Gentianales. *New Phytologist* 2025;248(6):3312-21.
- **Ruijs V, Faurby S, Evans KE.** Investigating the use of olfactory cues to redirect elephant pathways in Makgadikgadi Pans, Botswana. *Pachyderm* 2025;66:43-52.
- **SamBio.** *Biologisk m ngfald: En guide f r svenska f reta.* Om aff  rsnyttan, riskerna och ansvaret f r v ra resurser. 2025. ISBN: 978-91-980433-3-4
- Sanchez-Martinez P, Dexter KG, Draper FC...**Damasco G.** et al. Phylogenetic conservatism in the relationship between functional and demographic characteristics in Amazon tree taxa. *Functional Ecology* 2025;39(1):181-98.
- Severgnini MR, Ganci CC, Souza FL, Almeida-Gomes M, Angeoletto F, **Provete DB.** Ecological dynamics of frogs in tropical cities: Uncovering bias using a systematic literature review. *Ecology of Tropical Cities, Volume II: Biodiversity, People & Places* 2025:265-90.
- **Silvestro D**, Gorla S, **Antonelli A.** Reconciling top-down conservation priorities with bottom-up local needs. *One Earth* 2025; 7(10):1858-1873
- **Silvestro D**, Gorla S, Groom B, Sterner T, **Antonelli A.** The 30 by 30 biodiversity commitment and financial disclosure: metrics matter. *Current Opinion in Environmental Sustainability* 2025;77:101587.
- **Silvestro D**, Pimiento C. Emerging uses of artificial intelligence in deep time biodiversity research. *Nature Reviews Biodiversity* 2025;1(10):671-77.
- Sim es ARG, Leliaert F, Bramley GL... **Antonelli A.** et al. Equipping the next generation of plant taxonomists: Insights and recommendations. *Trends in Plant Science* 2025.
- **Sj man H**, Hirons A, Martin KW. Species-specific evaluation of growth and environmental tolerance for ecosystem services—evaluation from a botanic tree collection. *Urban Ecosystems* 2025;28(3):114.
- **Sj man, H.**, Hirons, A. & Martin, K.W.E. Species-specific evaluation of growth and environmental tolerance for ecosystem services – evaluation from a botanic tree collection. *Urban Ecosyst* 2025; 28(114)
- Snoeks JM, Pathak-Broome A, **Hagan JG**, Vanschoenwinkel B. Large-Scale Variation in Biodiversity–Ecosystem Functioning (BEF) Relationships in Aquatic Metacommunities on Terrestrial Islands. *Global Ecology and Biogeography* 2025;34(8)
- Somervuo P, Roslin T, Fisher BL...**Antonelli, A.** et al. Human contributions to global soundscapes are less predictable than the acoustic rhythms of wildlife. *Nature Ecology & Evolution* 2025;9(9):1585-98.
- **Stensteke M.** *Policy Brief: Naturrestaureringsf rordningen – rekommendationer f r inkluderande processer.* 2025. SLU Future Food
- Stewart EC, **Wiklund H**, Neal L, et al. Impacts of an industrial deep-sea mining trial on macrofaunal biodiversity. *Nature Ecology & Evolution* 2025:1-12.
- **Stenseke M**, Olsson JA, Arvidsson S, Droste N, **Elliot V**, Gipperth L, Smith HG. (2025). Defining and operationalizing ‘nature-positive’—a question of power. *Current Opinion in Environmental Sustainability.* 2025;77: n101581.
- Sun Y, **Silvestro D**, Mathes GH, van Der Heijden MG, M ller-Sch rer H. Eco-Evolutionary Dynamics of Plant–Soil Feedbacks Explain the Spread Potential of a Plant Invader Under Climate Warming and Biocontrol Herbivory. *Global Change Biology* 2025;31(3)

- Sun, Y., **Silvestro, D.**, Mathes, G.H., van der Heijden, M.G.A. and Müller-Schärer, H., Eco-Evolutionary Dynamics of Plant–Soil Feedbacks Explain the Spread Potential of a Plant Invader Under Climate Warming and Biocontrol Herbivory. *Glob Change Biol*, 2025; 31
- Tedersoo L, Geisen S, Chang Y, **Nilsson RH**. Toward DNA-based taxonomy of prokaryotes and microeukaryotes. *Trends in Genetics* 2025.
- Truszkowski J, Maor R, Yousuf RB, et al. A probabilistic approach to estimating timber harvest location. *Ecological Applications* 2025;35(1)
- Valero DE, McKeon CR, **Bussière L**, et al. A Practical Approach to Developing and Using Online Games for Transdisciplinary Research into Complex Social-Ecological Systems. *Society & Natural Resources* 2025;38(5):516-39.
- Van Blerk J, Cramer M, West A, Musker S, **Verboom G**. The Contribution of Hydric Habitats to the Richness of the Cape Fynbos Flora. *Diversity and Distributions* 2025;31(1)
- Vidal Junior JdD, **Antonelli A**, Carbutt C, et al. Late 21st-Century Climate and Land Use Driven Loss of Plant Diversity in African Mountains. *Global Change Biology* 2025;31(9)
- **von Proschwitz T**. *Monacha cantiana* s. l. (MONTAGU 1803) found on the island of Åland, Finland, and some notes on other man spread molluscs on the island. 2025: Mitt. dash. malakozool 2025;113: 36-37
- **von Proschwitz T**. Nomenclatorial, taxonomical and zoogeographical notes on Northern European land- and freshwater molluscs: The correct spelling of *Gyraulus stromi* (WESTERLUND 1881) (Gastropoda: Hygrophila: Planorbidae). *Mitt. dash. malakozool* 2025;113: 38-39
- **von Proschwitz T**. On the micro-habitat of *Marstoniopsis insubrica* (KÜSTER 1853). *Mitt. dash. malakozool* 2025;113: 39-40
- **von Proschwitz T**. The Swedish Fauna of Freshwater Snails—An Overview of Zoogeography and Habitat Selection with Special Attention to Red-Listed Species. *Diversity* 2025;17(4):251.
- Wang S, Zhang D, Jiao X... **Olsson U**. et al. Conservation genomics of two endangered buntings reveal genetic diversity before and after severe population declines. *BMC biology* 2025;23(1):287.
- Wang X, **Bjorkman AD**, Li X, et al. Shifts in plant reproductive phenology induced by multiple global change factors depend on phenological niche and pollination mode. *Journal of Plant Ecology* 2025;18(3):rtaf048.
- Woudstra GE, **Evans KE**, Moe SR. What Do Male Elephants Eat When Females Are Not Around? *African Journal of Ecology* 2025;63(3)
- Wrisberg O, Petoe P, de Lima Ferreira P, **Bacon CD**, et al. A densely sampled nuclear phylogenomic analysis of the coryphoid palms (Arecaceae: Coryphoideae). *Taxon* 2025;74(6):1372-92.
- Wyckhuys KA, Abram PK, Barrios E, Cancino J, Collatz J, Fancelli M, Klein A-M, Lindell CA, **Osterman J**, Pinto M. Orchard systems offer low-hanging fruit for low-carbon, biodiversity-friendly farming. *BioScience* 2025:biae140.
- Xiaoyi Wang, **Anne D Bjorkman**, Xin Li, Mengdi Luan, Mengqian Wang, Xuebin Yan, Ying Wang, Xianhui Zhou, Miaojun Ma, Hui Guo, Shifts in plant reproductive phenology induced by multiple global change factors depend on phenological niche and pollination mode, *Journal of Plant Ecology* 2025;18(3)
- Zylinska, J., Wulia, T., Wolthers L, Pedersen, P O, Overgaard, M, **Nielsen, P.**, Mangalanayagam N, Klasto C. 2025. *Field guide to bugs & metamorphosis: glitching photography*. Art & Theory Publishing, 267 p. ISBN: 978919887058



GÖTEBORGS UNIVERSITET