



# Gillberg Neuropsychiatry Centre Newsletter



News article

## Professor Christopher Gillberg to give prestigious Per Dubb Lecture

The GNC is thrilled and honoured to announce that Professor Christopher Gillberg will deliver the prestigious Per Dubb Lecture in December 2025.

[English](#) | [Swedish](#)

### A note from the GNC's Communications Officer

Welcome to our 2nd GNC newsletter!

On behalf of myself and all the researchers at the GNC, we hope you had a very relaxing and peaceful summer.

Once again, we are pleased to share the latest developments from our ongoing research into ESSENCE and neuropsychiatric disorders.

In this issue, you'll find more updates on recently published studies highlighting significant progress in the field, information on new and ongoing research projects, funding, media coverage, blog features, and news regarding our screening instruments.

I would like to take this opportunity to thank you for your continued interest and support in our work.

Best wishes,  
Anna Spyrou  
Communications Officer

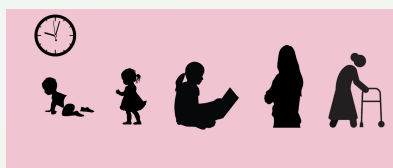


News article

## New ALF-funded research project to explore the lifelong journey of autism

GNC researcher and psychologist Caroline Mårland will spend two years researching long-term outcomes for individuals with autism, supported by an ALF position and annual project funding.

[English](#) | [Swedish](#)



## New theses published

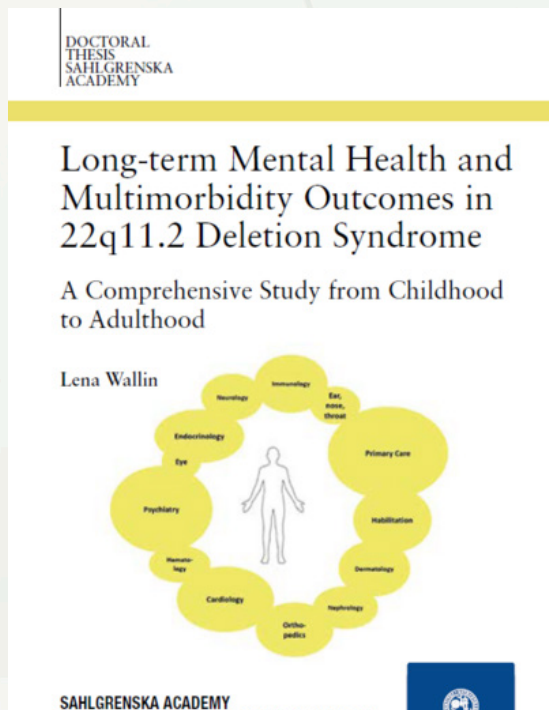


News article

### New thesis provides insights on long-term mental health and multimorbidity outcomes in 22q11.2 Deletion Syndrome (22q11.2DS)

In April 2025, Lena Wallin successfully defended her thesis on the rare disorder, 22q11.2DS. Read more about her groundbreaking findings.

[English](#) | [Swedish](#)



News article

### Groundbreaking Swedish study reveals 30-year outcomes for adolescents with anorexia nervosa

In May 2025, Sandra Rydberg Dobrescu also successfully defended her thesis on anorexia nervosa.

Read more about this landmark study.

[English](#)





## Gillberg's blog



Blog entry

### Polymicrogyria (PMG)



Polymicrogyria (PMG) is a relatively common brain malformation linked to developmental and neurological disorders, including epilepsy and autism, often caused by prenatal factors like infections, with growing evidence suggesting a need for early diagnosis, awareness, and potential preventive treatments. Professor Gillberg dedicates his blog to 10-year old Hera.

[English](#) | [Swedish](#)

Blog entry

### 22q11.2 Deletion Syndrome



What is 22q11.2DS? Professor Gillberg gives an overview of this genetic disorder causing developmental, physical, and mental health issues, requiring multidisciplinary care.

[English](#) | [Swedish](#)

## Screening tools/diagnostic aids news

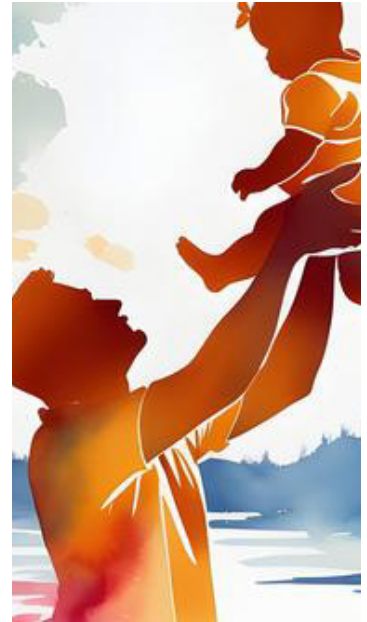
News article



### New diagnostic tool, ESSENCE-D aims to revolutionise the assessment of neurodevelopmental conditions

New diagnostic aid, ESSENCE-D aims to streamline early diagnosis of multiple neurodevelopmental disorders, improving care quality, access, and outcomes.

[English](#) | [Swedish](#)

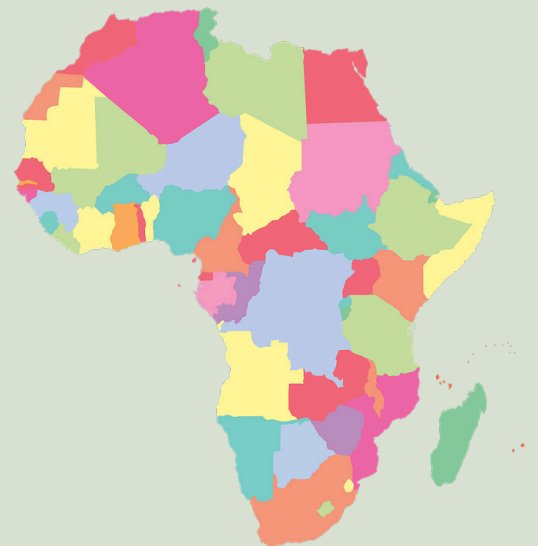


News article

### Feasibility of neurodevelopmental disorder screening for pre-school children in rural South Africa

A new study shows that community-based screening using ESSENCE-Q is a promising way to identify neurodevelopmental disorders early in rural South Africa, despite resource and trauma-related challenges.

[English](#) | [Swedish](#)





## Researcher in focus

### Karin Melin

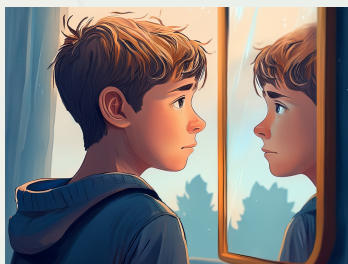


## New researcher joins the GNC!

Learn more about Karin Melin's career path and her extensive research interests.

[English](#) | [Swedish](#)

## Karin Melin secures major research grant for early detection of Body Dysmorphic Disorder in adolescents



Karin Melin has secured a major research grant for a project at the Gillberg Neuropsychiatry Centre aimed at improving early detection and understanding of Body Dysmorphic Disorder in adolescents by examining prevalence, risk factors, and family influences.

[English](#) | [Swedish](#)

## Recent publications 2025

1

The role of treatment expectations in predicting treatment outcomes: examining clinical and demographic influences  
[Nordic Journal of Psychiatry](#)

2

A General Factor of Psychopathology Predicts Treatment and Long-Term Outcomes in Children and Adolescents With Obsessive-Compulsive Disorder  
[Journal of the American Academy of Child & Adolescent Psychiatry](#)

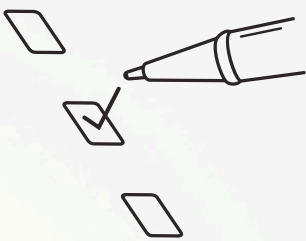
3

Psychotic vulnerability in pediatric obsessive-compulsive disorder: associations with clinical features and treatment outcome in two clinical samples  
[European Child & Adolescent Psychiatry](#)

4













Physical activity and sedentary behaviour amongst children with obesity - exploring cross-sectional associations between child and parent  
[Journal of Activity, Sedentary and Sleep Behaviors](#)

# Screening instruments available



Due to popular demand, the GNC has made the following screening questionnaires and languages available on our website. We are continuously working to add more languages. Our mission is to increase the global accessibility of our screening questionnaires by translating them into as many languages as possible.

We strive to translate all of our screening questionnaires into as many languages as possible so our instruments can be used globally in both research and clinical settings. If you wish to use our questionnaires but notice it is not available in the language you require, and wish to work with us on this project, please Anna Spyrou [anna.spyrou@gnc.gu.se](mailto:anna.spyrou@gnc.gu.se)

<u>ASSQ</u>	<u>ASSQ-REV</u>	<u>ESSENCE-Q CHILD</u>	<u>ESSENCE-Q ADULT</u>	<u>ASSERT</u>
				
				
				
				



## GNC researchers in the media



### **Ny modell hittar barn med autism tidigare**

Emilia Carlsson, Gudrun Nygren

Aftonbladet

### **Alkoholskador hos barn kan vara vanligare än tidigare trott**

Valdemar Landgren

Sveriges Radio



### **Ny skolutredning presenterad – så kan den nya läroplanen bli**

Christopher Gillberg

Special Nest



### **Inför hjälpklasser för elever med svag teoretisk begåvning**

Ida Lindblad, Elisabeth Fernell, Christopher Gillberg

Göteborgs-Posten

## New publications

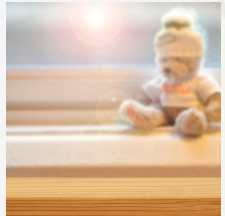


### Overview of scientific articles recently published by GNC researchers



Physical activity and sedentary behaviour amongst children with obesity - exploring cross-sectional associations between child and parent.

Journal of Activity, Sedentary and Sleep Behaviors



Infant mental health services for birth and foster families of maltreated pre-school children in foster care (BeST?): a cluster-randomized phase 3 clinical effectiveness trial.

Nature Medicine



Neurodevelopmental problems in pre-school children in rural Western Cape, South Africa: is community screening feasible?

BMC Psychiatry



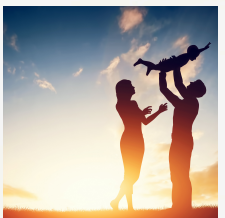
Persistence of the developmental language disorder diagnosis, neurodevelopmental trajectories and attendance at offered interventions.

Acta Paediatrica



Neurodevelopmental and psychiatric conditions in 600 Swedish children with the avoidant/restrictive food intake disorder phenotype.

Journal of Child Psychology and Psychiatry



Introducing a self-managed early communication resource for parents - A mixed methods feasibility study of the Swedish "ComAlong online".

Disability and Rehabilitation: Assistive Technology



**Left visual field bias during face perception aligns with individual differences in reading skills and is absent in dyslexia.**

British Journal of Educational Psychology



**The Cognitive Profile in Adolescents With Anorexia Nervosa and the Relationship With Autism and ADHD: A Pilot Study.**

European Eating Disorders Review



**Special Educational Needs Coordinators' knowledge and understanding of perception in preschool children with autism: A focus group study.**

Journal of Research in Special Educational Needs



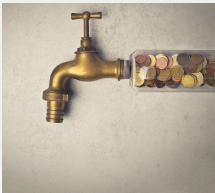
**Life Outcomes in Young Adults With Early Language Difficulties: A County-Based Register Study.**

Acta Paediatrica



**Adverse childhood experiences in children with neurodevelopmental disorders and their parents.**

Nordic Journal of Psychiatry



**Economic evaluation of a complex intervention to improve the mental health of maltreated children in foster care (BeST? Services trial).**

Journal of Public Health

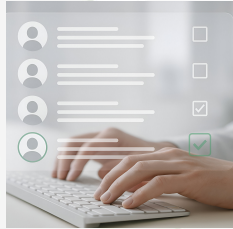


**A Cross-National Reliability Study of Catatonia in Individuals with Neurodevelopmental Disorders.**

Journal of Autism and Developmental Disorders







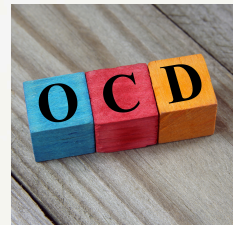
### The development of the ESSENCE Diagnostic aid (ESSENCE-D)

Child & Youth Services



### Developmental language disorder: similarities and differences between 6-year-old mono- and multilingual children.

Logopedics Phoniatrics Vocology



### Psychotic vulnerability in pediatric obsessive-compulsive disorder: associations with clinical features and treatment outcome in two clinical samples

European Child & Adolescent Psychiatry





## In memory of



Suzanne Steffenburg

It is with a heavy heart and great sadness we announce the passing of our dear colleague Suzanne Steffenburg.  
[English](#) | [Swedish](#)



Gunnar Fransson

It is with a heavy heart and great sadness we announce the passing of our dear colleague Gunnar Fransson.  
[English](#) | [Swedish](#)



Gun Andersson

It is with a heavy heart and great sadness we announce the passing of our dear colleague Gun Andersson.  
[English](#) | [Swedish](#)



## Research Seminars 2025/2026

20th August 2025

Presenter: Kerstin Erdal

English/Digital only

Title: "Contextualising data: Examples from a qualitative and a multigroup-multilevel analysis"



24th September 2025

Presenter: Mikael Granlund

English/BNK lecture hall and digital

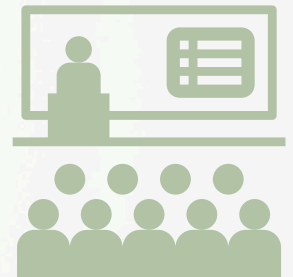
Title: "Pathfinder - A brief screening tool for detecting intellectual disability"

22nd October 2025

Presenter: Karin Melin

English/Digital only (due to lack of rooms)

Title: To be confirmed



19th November 2025

Presenter: Sara Landberg (TBC)

English

No information due to parental leave

17th December 2025

Presenter: Ben Truter

English/Digital only

Title: "ESSENCE in a structurally disadvantage rural community in South Africa"

21st January 2026

Presenter: Maria Davidsson

Swedish/Digital

Title: "Family stress, adverse childhood experiences and conflict strategies in ADHD and autism"

18th February 2026

Presenters: Valdemar Landgren/Johan Nyrenius

English/BNK lecture hall and digital

Title: "The Catatonia Helsingborg – Overlap and Outcomes Transdiagnostic Study (CAHOOTS)"

18th March 2026

Presenter: Phil Wilson

English/Digital

Title: "What role for primary care in improving neurodevelopmental outcomes at 30 months"

