



PUBLIC OPINION IN SWEDEN TRUST IN PUBLIC AGENCIES AND DEMOCRACY

JOHAN MARTINSSON
ASSOCIATE PROFESSOR IN POLITICAL SCIENCE
DIRECTOR OF THE SOM INSTITUTE

Before we start

- Who am I?
- What is the SOM Institute?

Content

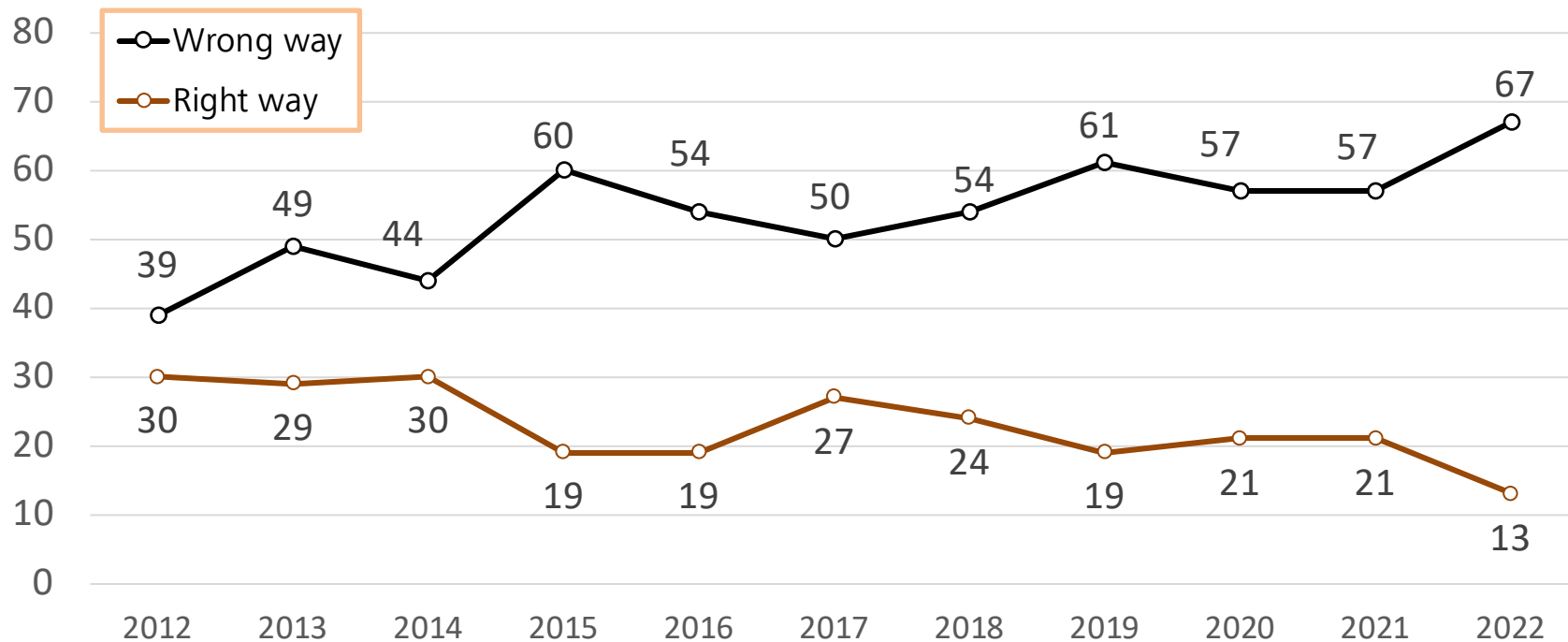
- General trends and indicators
- A quick international comparison
- Views on the economy
- Opinions on EU, NATO and migration
- The public's political agenda



GENERAL TRENDS IN PUBLIC OPINION

“Generally speaking, would you say that the development in Sweden is heading in the right or in the wrong direction?”

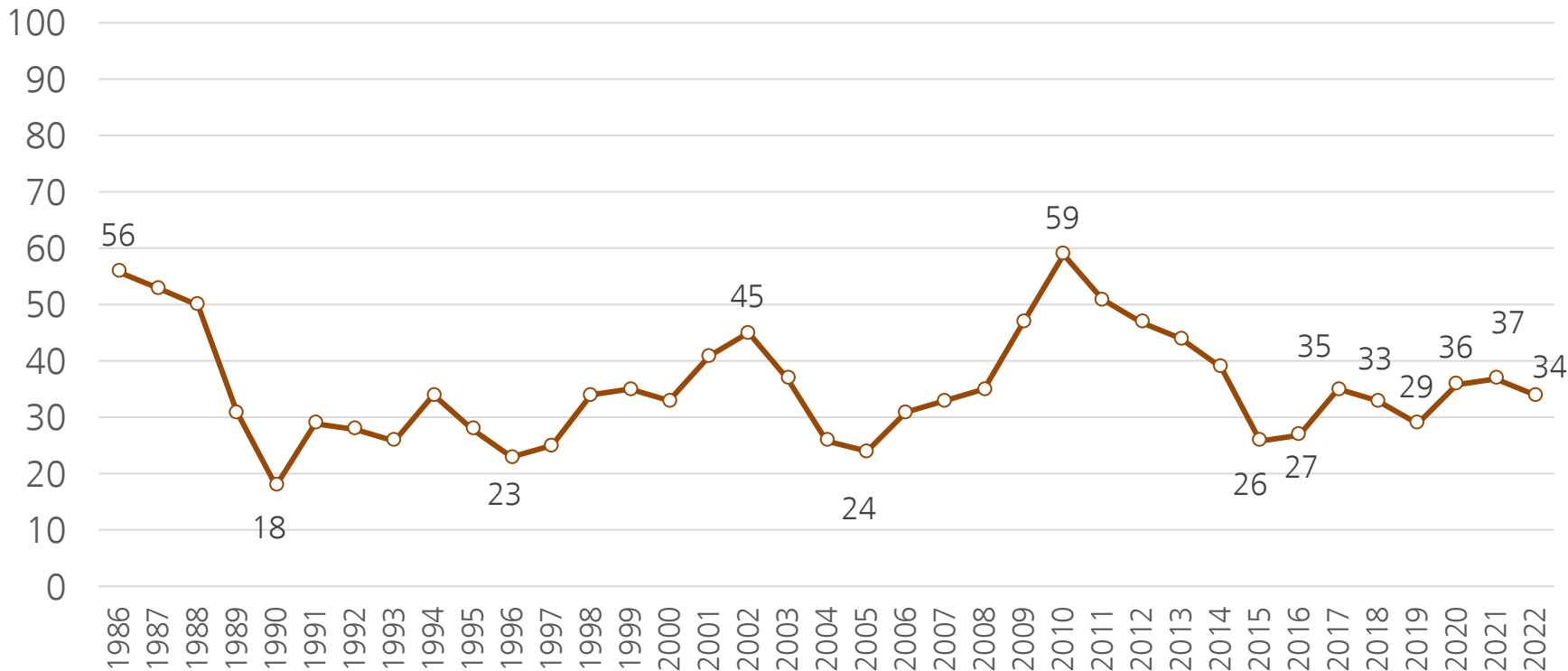
View on the general development in Sweden (percent)



Source: The National SOM surveys 2012–2022

The governments job performance

Share very / fairly good (percent)

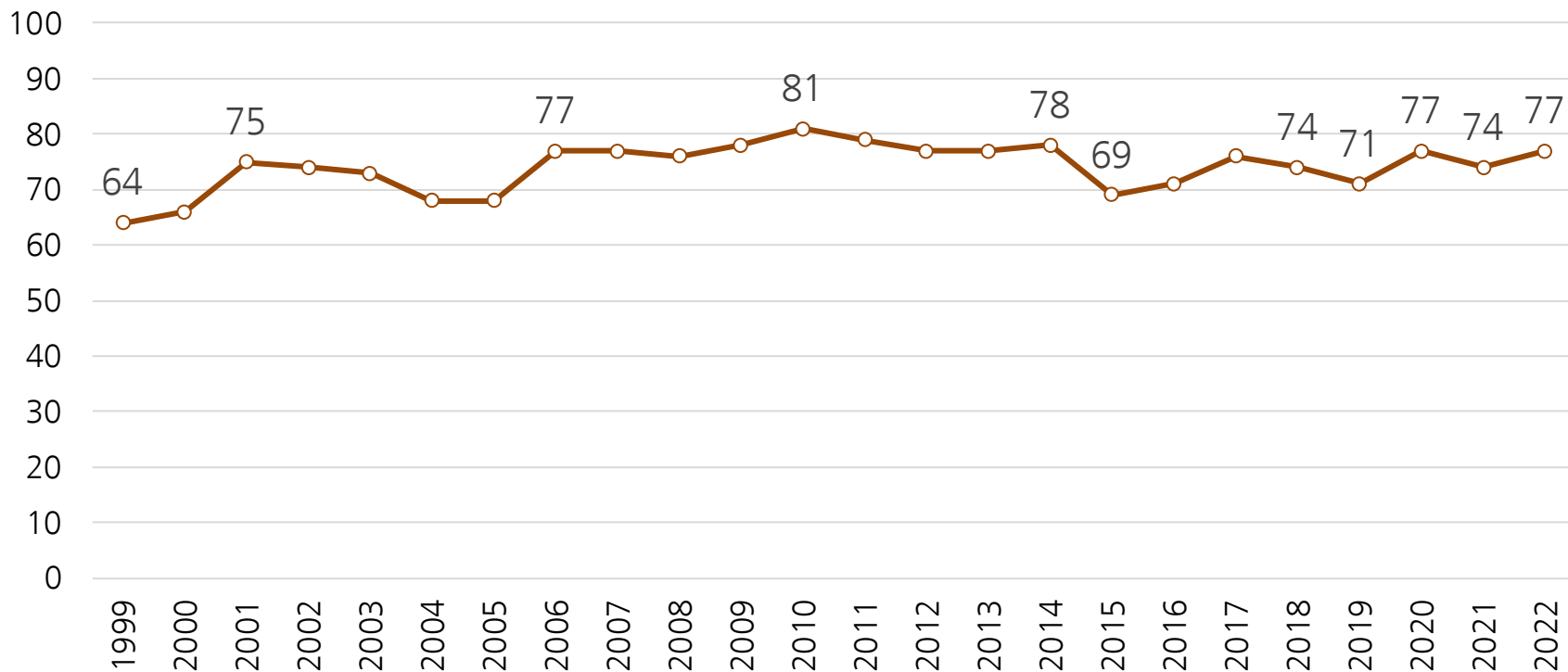


Source: The national SOM surveys 1986-2022

“Generally speaking, how satisfied are you with how the Swedish democracy is working?”

Satisfaction with democracy in Sweden (percent)

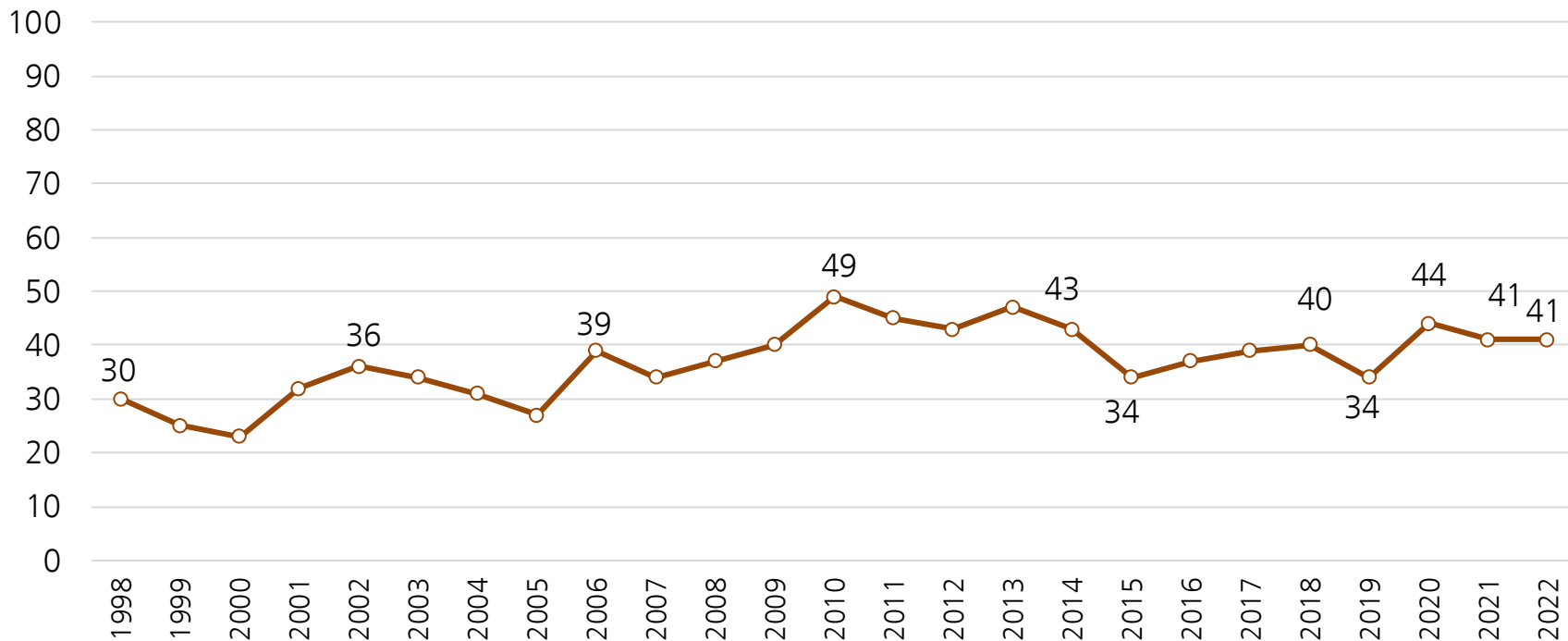
Share very/fairly satisfied



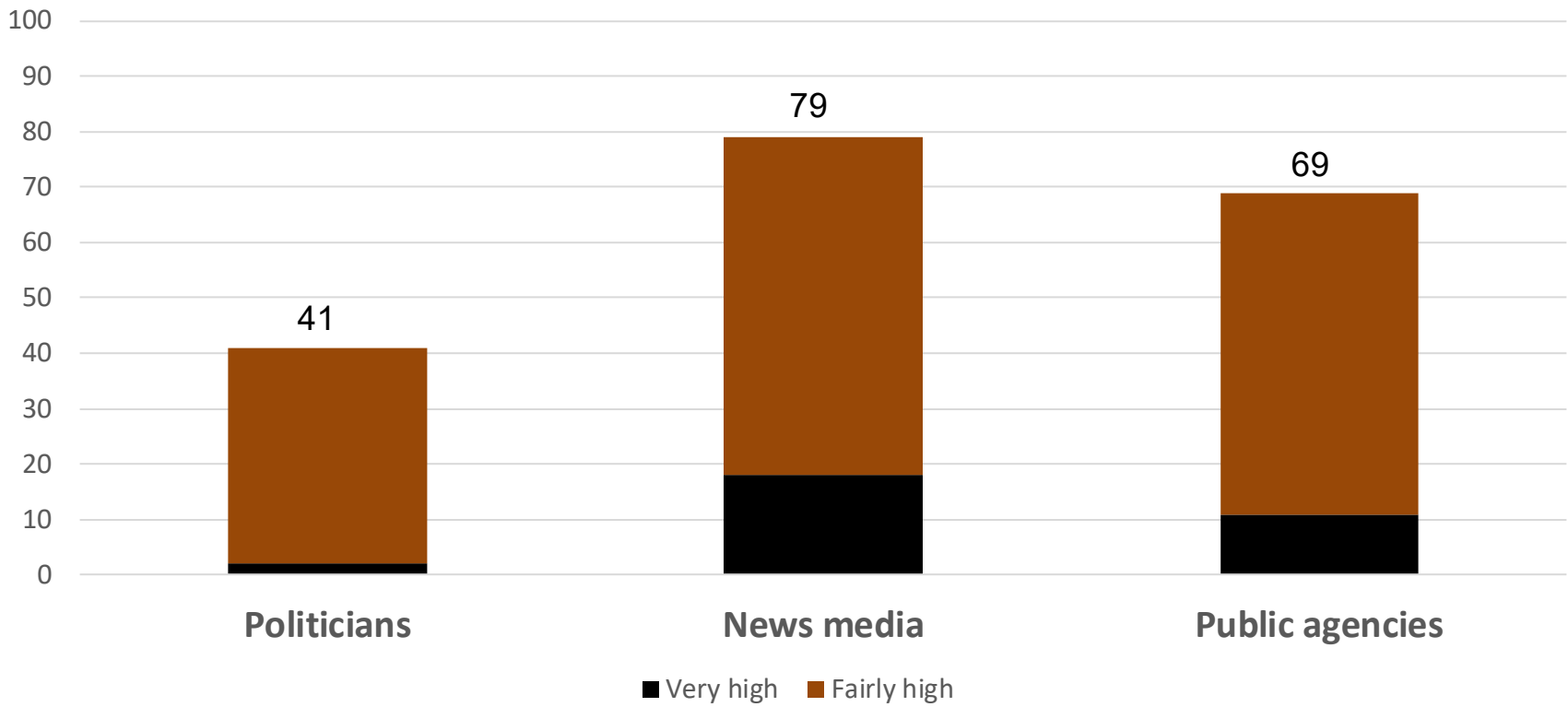
"Generally speaking, how much trust do you have in swedish politicians?"

Trust in swedish politicians

Share very / fairly high trust (percent)



Trust in politicians, public agencies, and news media 2022



Source: The national SOM surveys 2022



Summary of general trends and indicators

- ✓ Satisfaction with democracy and trust in politicians relatively high and stable
- ✓ Very high levels of pessimism about the Swedish development



BRIEF INTERNATIONAL COMPARISON



An overview of satisfaction with democracy globally and over time can for example be found in this report

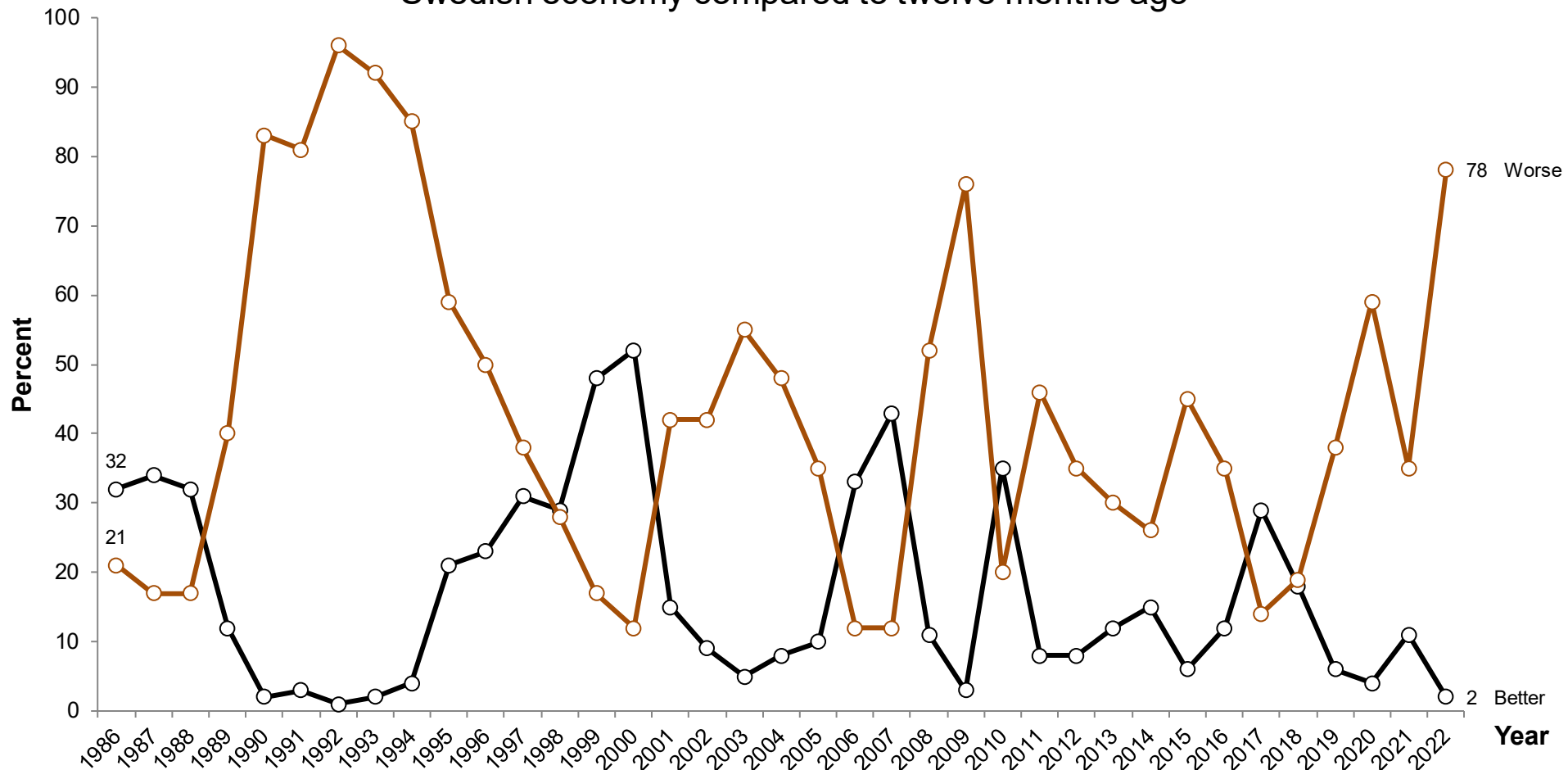


- (For graphs, check the original publication)
- Summary: satisfaction with democracy globally lower now than in the late 90s
- Especially in central america, latin america, and in parts of africa
- Still relatively high in northern europe (and in the baltic countries)
- The nordic countries are among the countries with the lowest degree of dissatisfaction with democracy, and the baltic countries around the middle of the global ranking



ASSESSING THE ECONOMY

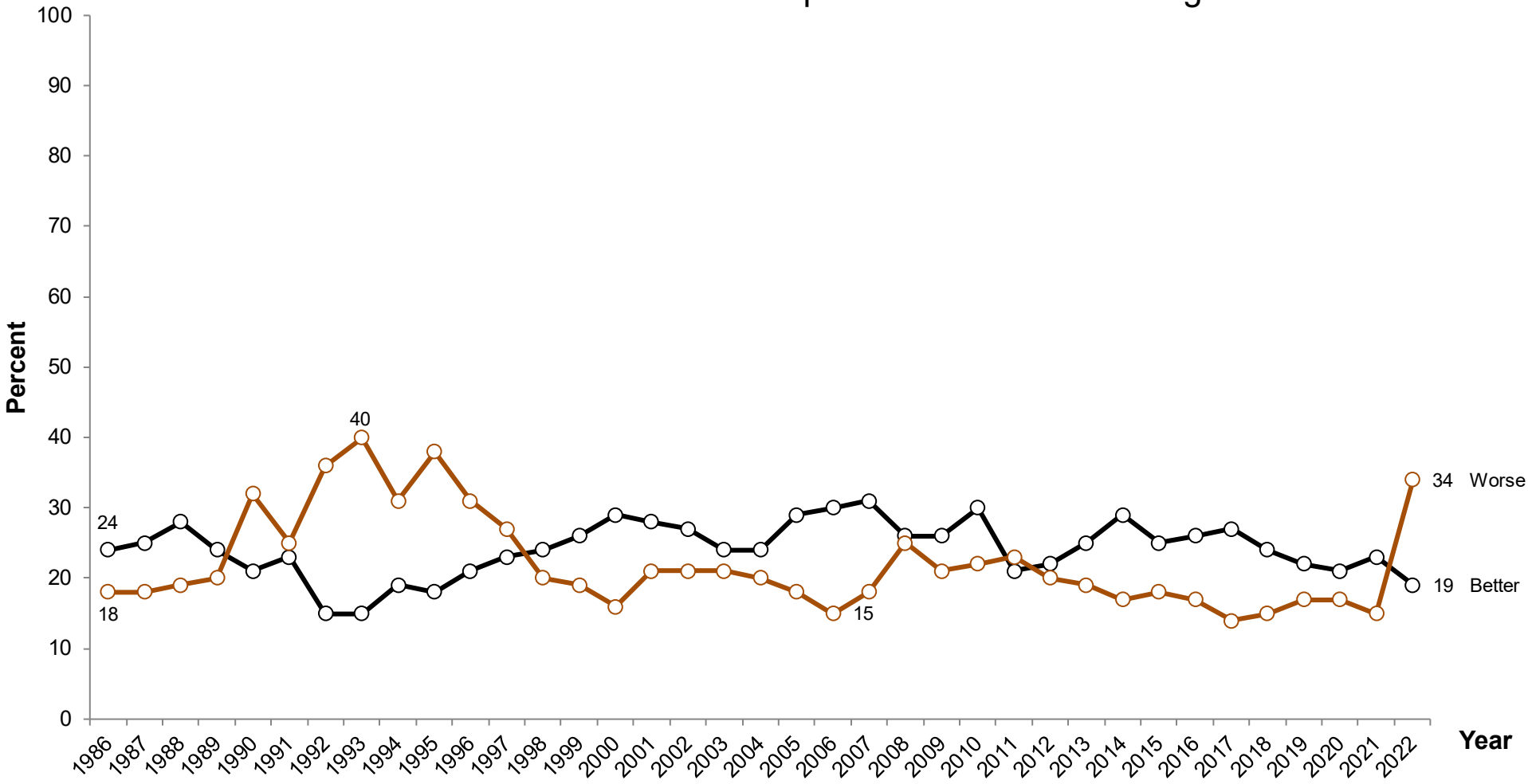
Swedish economy compared to twelve months ago



Comment: Five response alternatives to the question asked: "Gotten much better; Gotten somewhat better; Stayed about the same; Gotten somewhat worse; Gotten much worse". All respondents are included.

Question: "According to your view, during the last twelve months, has the Swedish economy gotten better, remained the same, or gotten worse?"

Personal financial situation compared to twelve months ago



Comment: Five response alternatives to the question asked: "Gotten much better; Gotten somewhat better; Stayed about the same; Gotten

Question: "According to your view, during the last twelve months, has your personal financial situation gotten better, remained the same, or

Summary of view on the economy

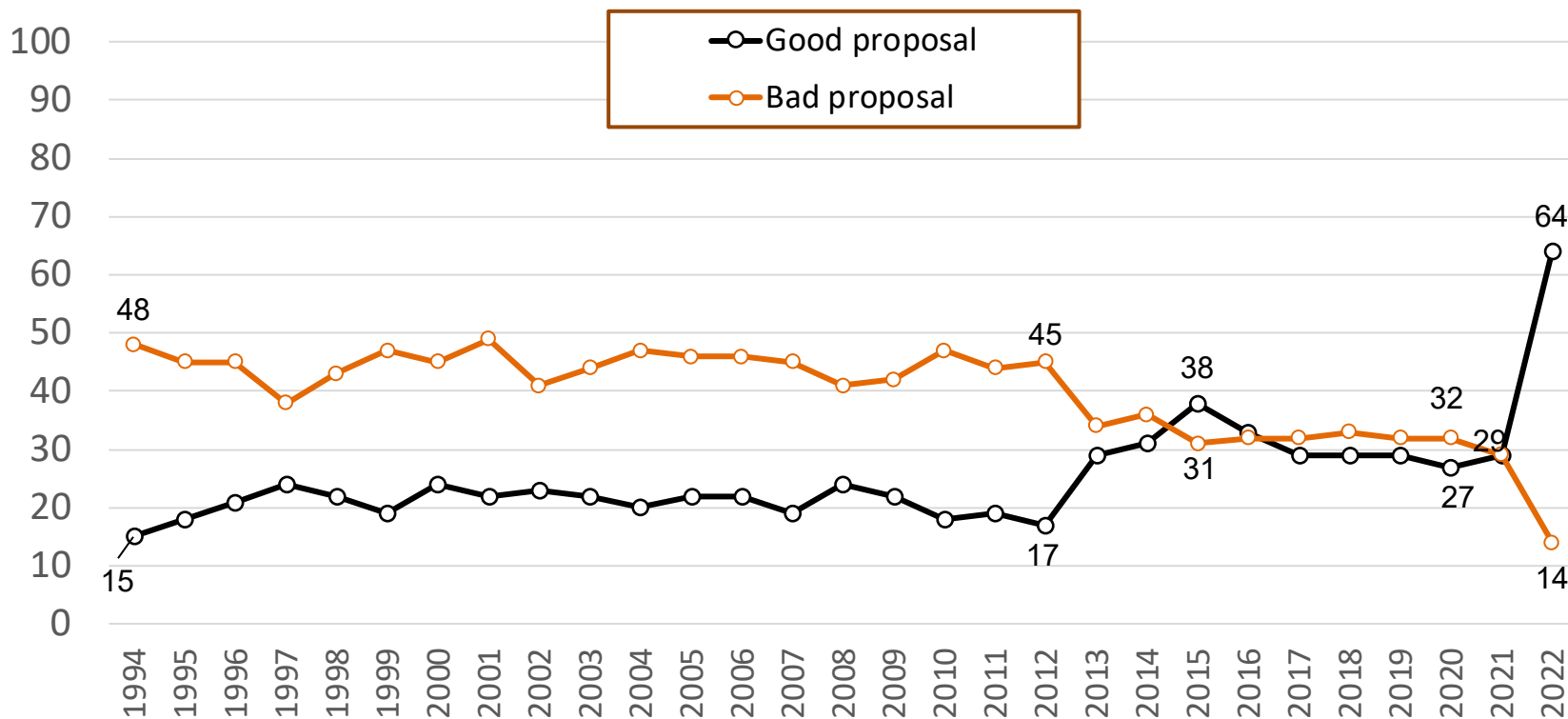
- ✓ The most negative economic assessments we have seen for very long time, both for society and the household economic situation
- ✓ The quickest worsening of the perceived household economy in one year since the start of the SOM surveys
- ✓ Most household say they still manage fairly well on their income



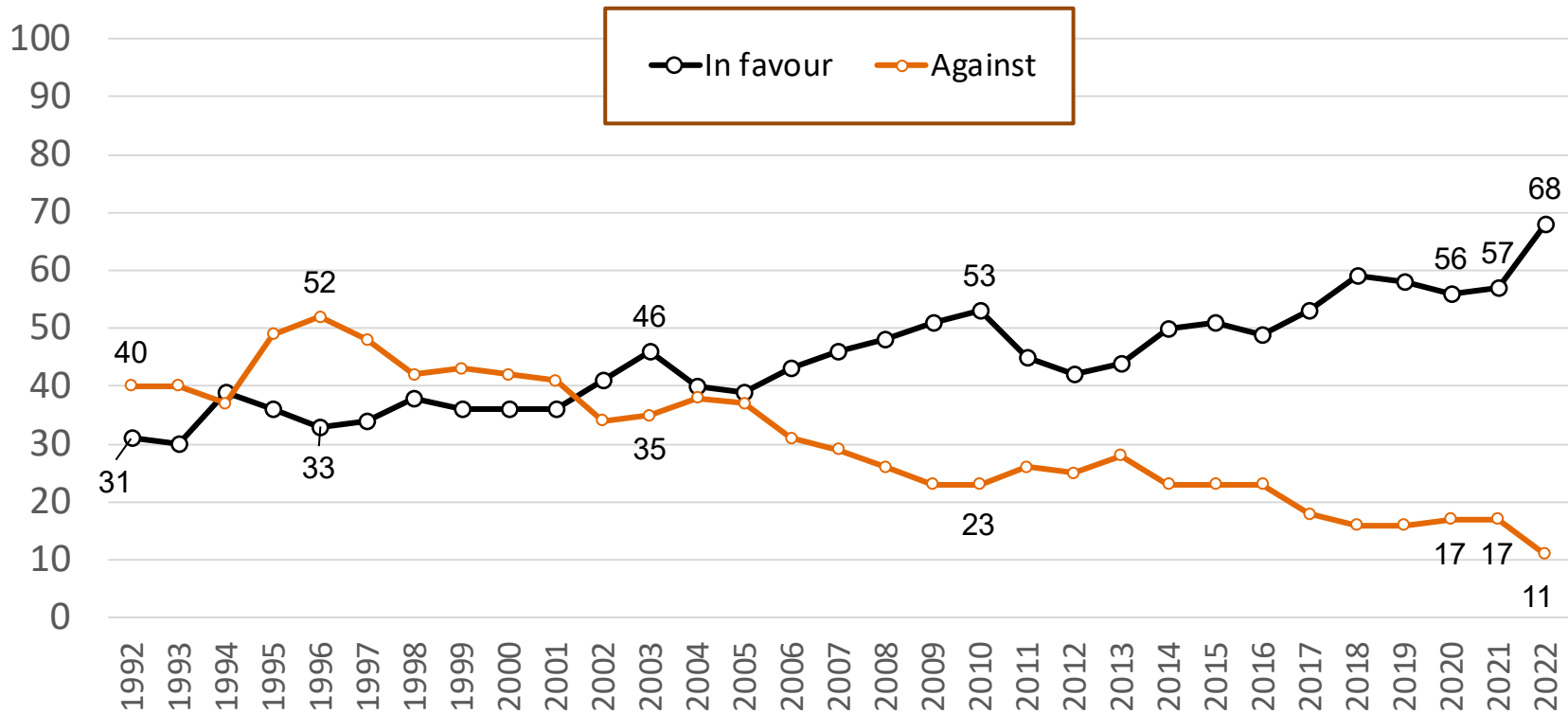
PUBLIC OPINION OVER TIME IN SOME IMPORTANT AREAS

"Sweden should become a member of NATO"

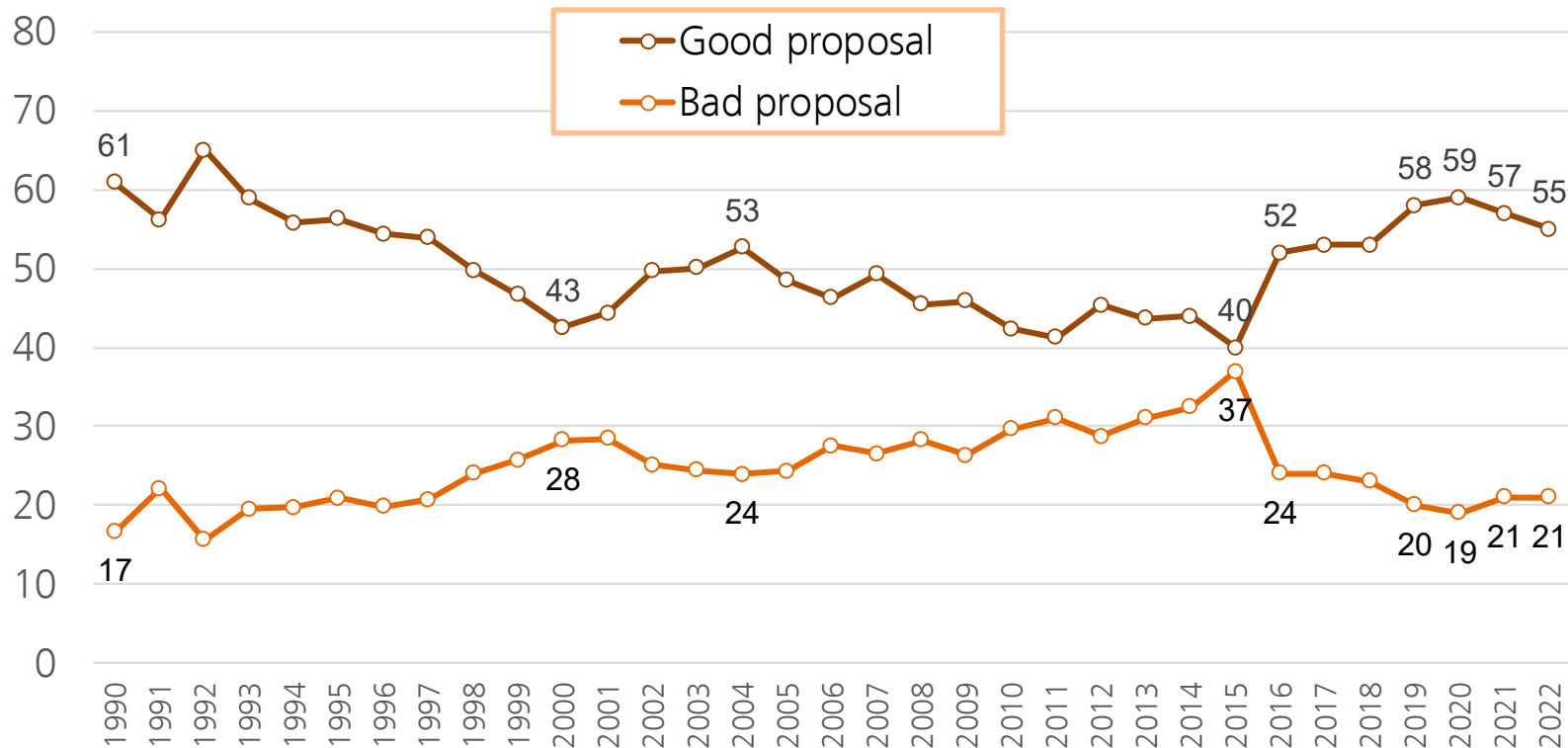
Attitudes to swedish NATO membership



Attitudes to the Swedish EU membership



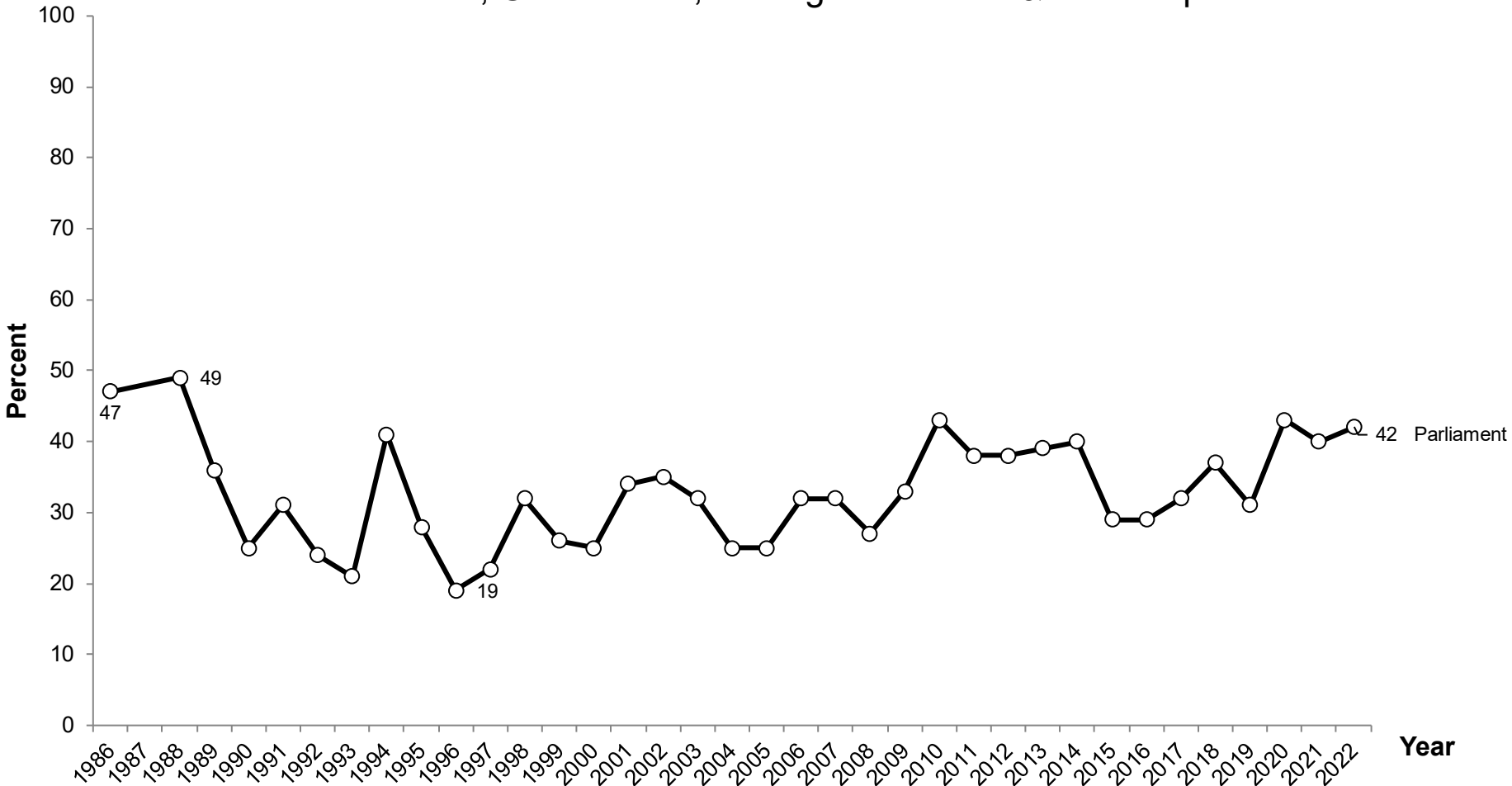
Opinion on receiving *fewer* refugees in Sweden





THE PUBLIC'S TRUST IN PUBLIC AGENCIES AND THE PARLIAMENT

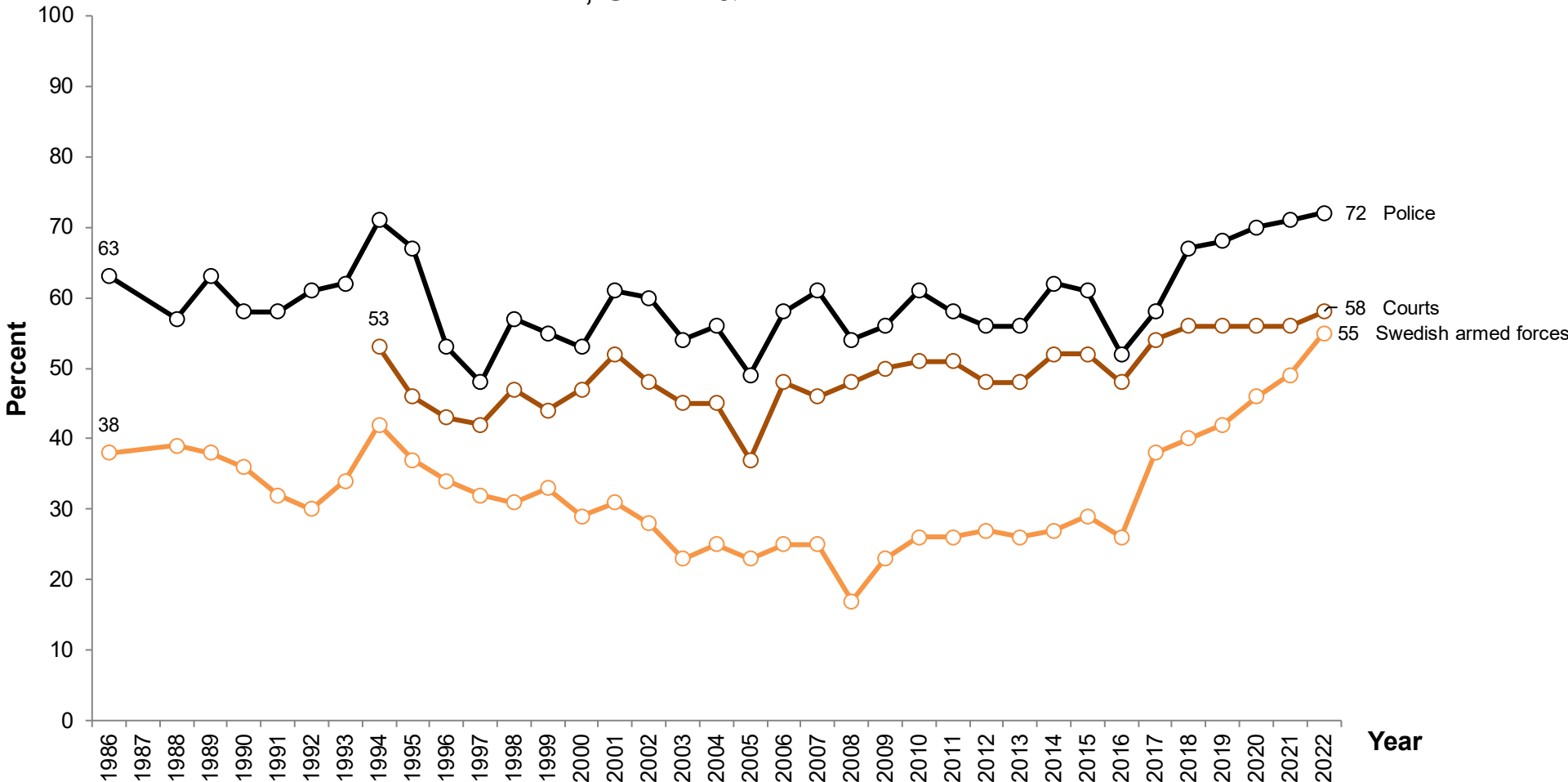
Parliament, Government, Local governments & Political parties



Comment: Five response alternatives to the question asked: "Very much; Fairly much; Neither much nor little; Fairly little; Very little". The lines show the percentage of respondents indicating very or fairly

Question: "How much confidence do you have in the way the following institutions/groups do their job?"

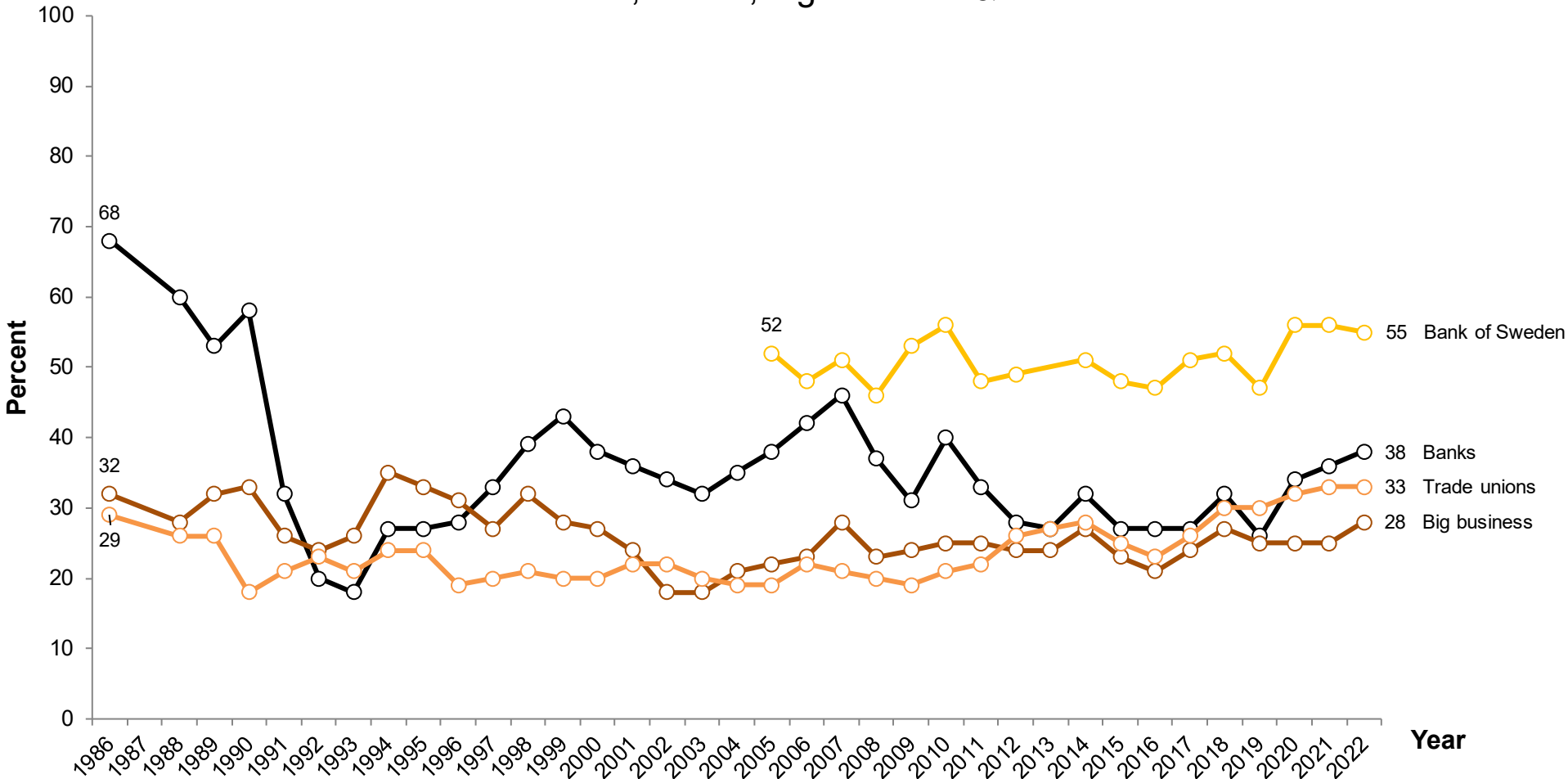
Police, Courts & Swedish armed forces



Comment: Five response alternatives to the question asked: "Very much; Fairly much; Neither much nor little; Fairly little; Very little". The lines show the percentage of respondents indicating very or fairly

Question: "How much confidence do you have in the way the following institutions/groups do their job?"

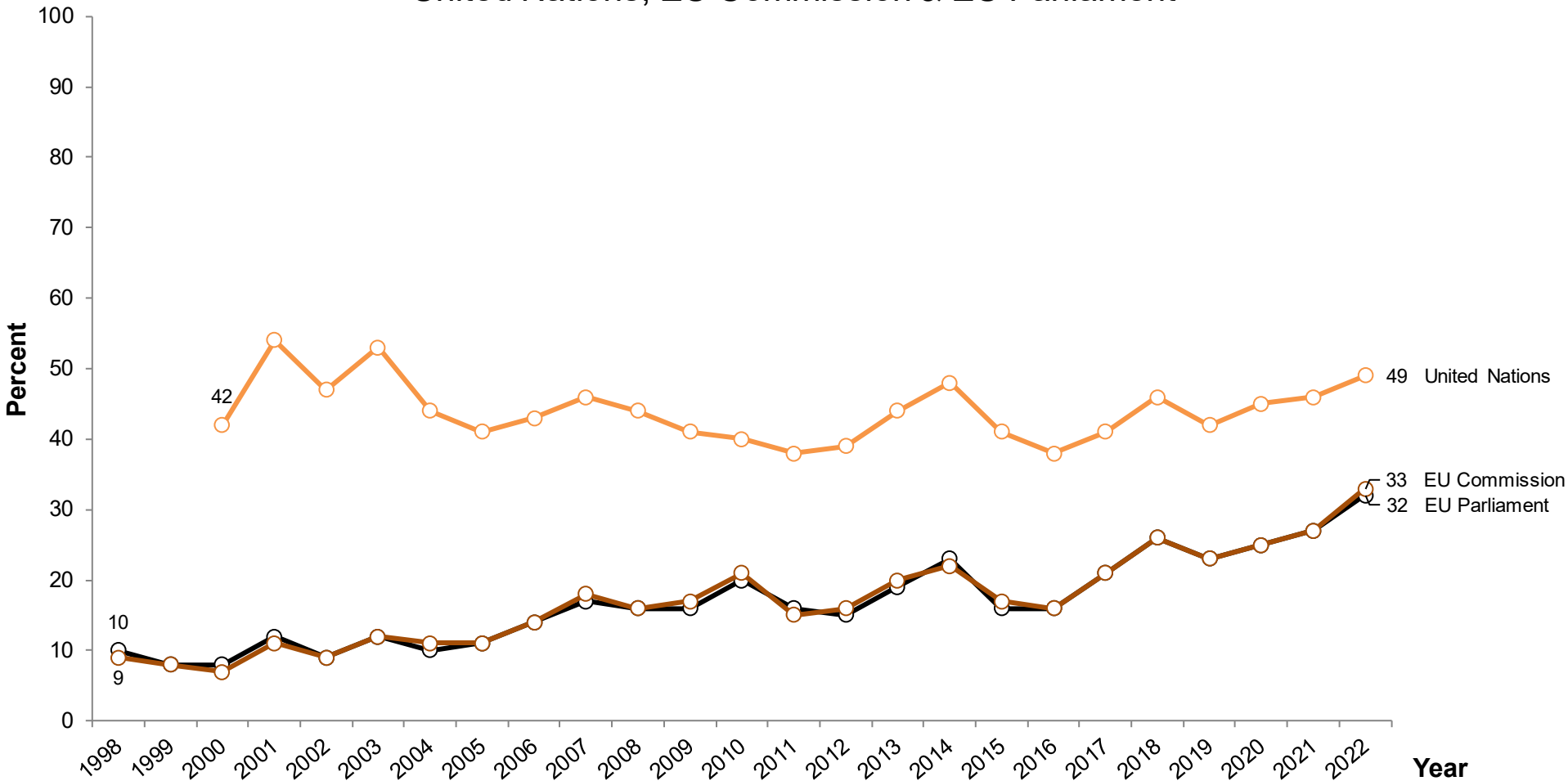
Bank of Sweden, Banks, Big business & Trade unions



Comment: Five response alternatives to the question asked: "Very much; Fairly much; Neither much nor little; Fairly little; Very little". The lines show the percentage of respondents indicating very or fairly

Question: "How much confidence do you have in the way the following institutions/groups do their job?"

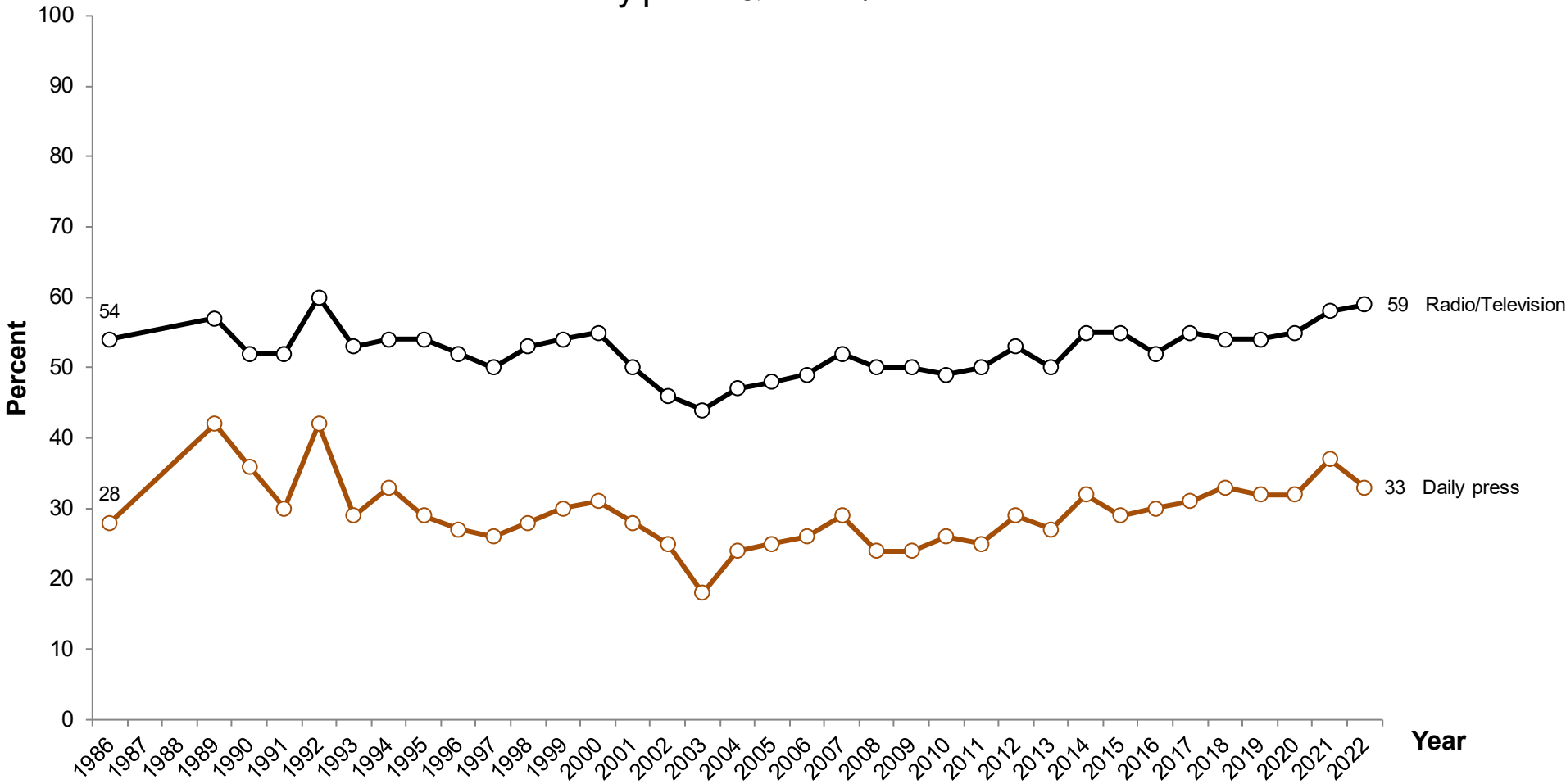
United Nations, EU Commission & EU Parliament



Comment: Five response alternatives to the question asked: "Very much; Fairly much; Neither much nor little; Fairly little; Very little". The lines show the percentage of respondents indicating very or fairly

Question: "How much confidence do you have in the way the following institutions/groups do their job?"

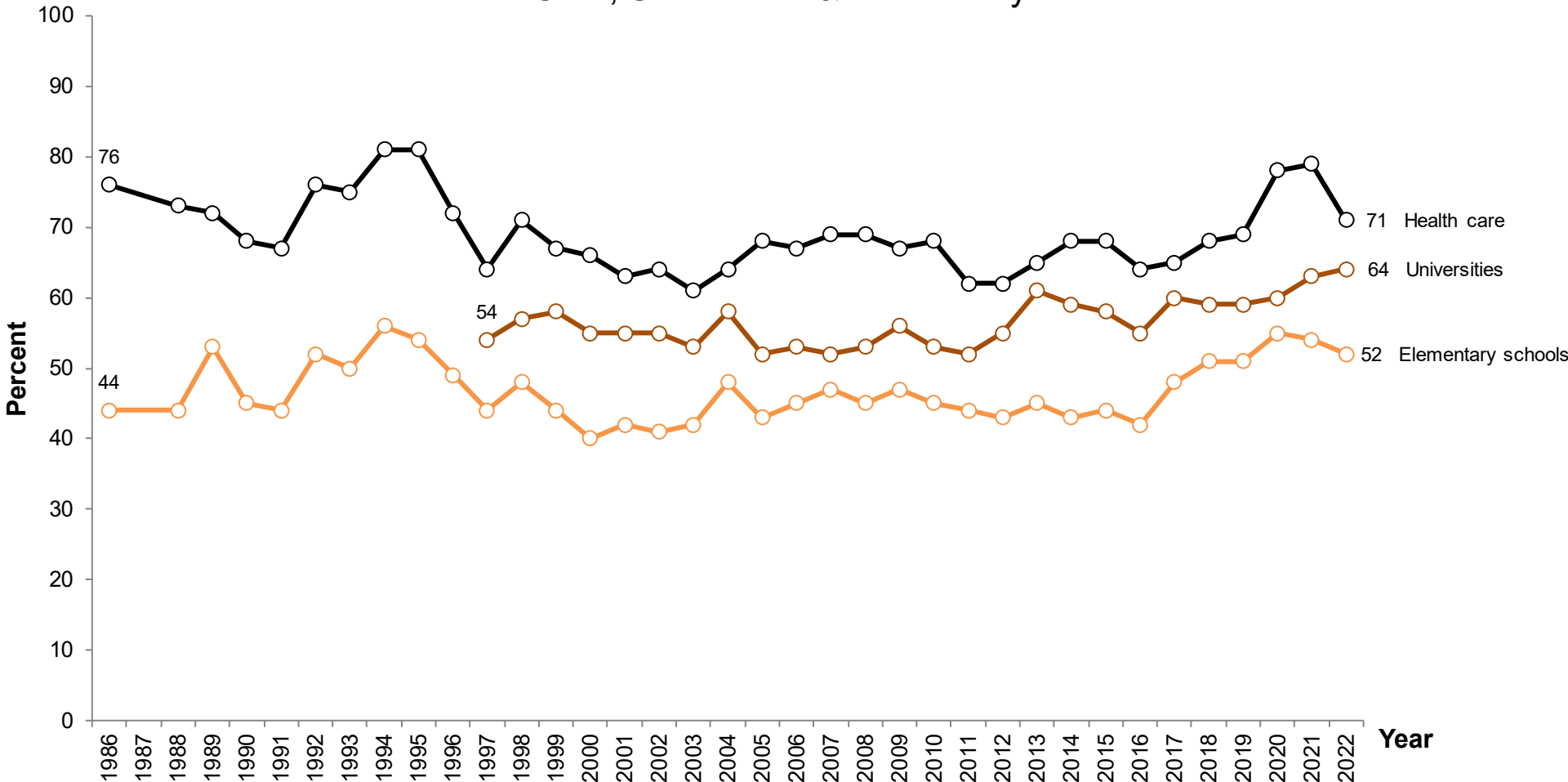
Daily press & Radio/Television



Comment: Five response alternatives to the question asked: "Very much; Fairly much; Neither much nor little; Fairly little; Very little". The lines show the percentage of respondents indicating very or fairly

Question: "How much confidence do you have in the way the following institutions/groups do their job?"

Health Care, Universities & Elementary Schools



Comment: Five response alternatives to the question asked: "Very much; Fairly much; Neither much nor little; Fairly little; Very little". The lines show the percentage of respondents indicating very or fairly

Question: "How much confidence do you have in the way the following institutions/groups do their job?"



WHICH ARE THE MOST IMPORTANT SOCIETAL ISSUES AND PROBLEMS ACCORDING TO THE SWEDISH PUBLIC?



Most important problems 2022

Share who mentions different issues on an open ended question. Up to three answers were allowed.

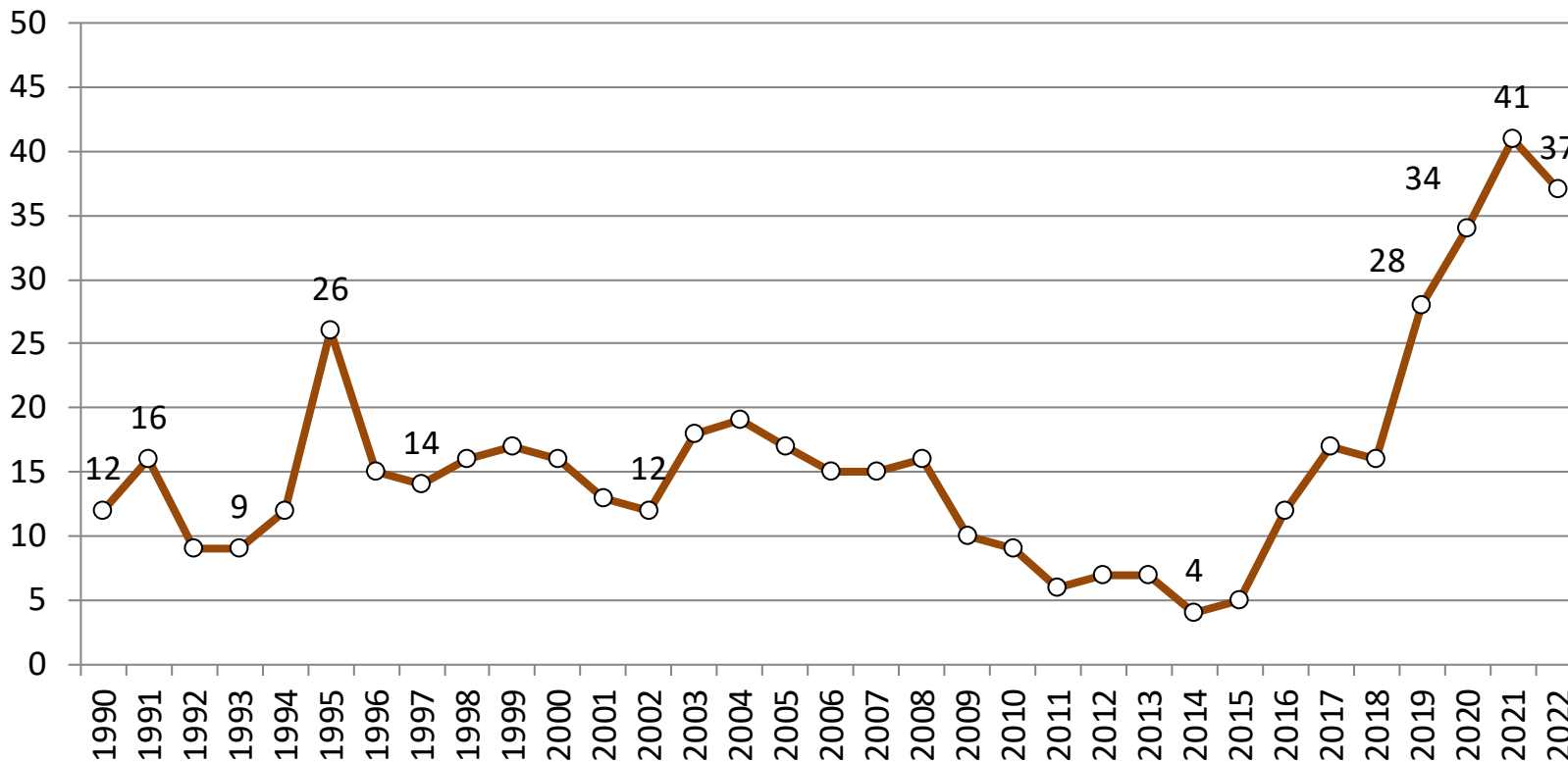
#1	Crime	37
#2	Health care	36
#3	Climate and energy	30
#4	Education	24
#5	Immigration & integration	22
#6	Social issues	12
#7	Economy	10
#8	Elderly care	7
#9	Democracy/rights	4
#10	Labour market	3

Which issues or societal problems do you think are the most important in Sweden today?



Most important issues: Crime

Share mentioning the issues as one of the most important 1990-2022 (percent)



Summary of the public's political agenda 2022

- ✓ Crime still issue no 1
- ✓ Economy increasing, but still not in the absolute top
- ✓ Migration/integration continues to lose gradually in importance
- ✓ Energy issues increasing in importance quickly



Thank you for your attention