



GÖTEBORGS  
UNIVERSITET

# SCIENCE FOR LIFE LABORATORY AND WALLENBERG NATIONAL PROGRAM FOR DATA-DRIVEN LIFE SCIENCE (DDL S)

Margit Mahlapuu

Prof. in Molecular Genetics at Univ. of Gothenburg

Co-Director of Wallenberg Center for Molecular and Translational Medicine, Gothenburg

# SciLifeLab and Wallenberg National Program for Data-Driven Life Science (DDLs)

- 12 year effort
- 3.1 billion SEK investment
- 11 partners



*Knut och Alice  
Wallenbergs  
Stiftelse*

 **SciLifeLab**








WALLENBERG CENTRES FOR MOLECULAR MEDICINE

**WASP** | WALLENBERG AI,  
AUTONOMOUS SYSTEMS  
AND SOFTWARE PROGRAM

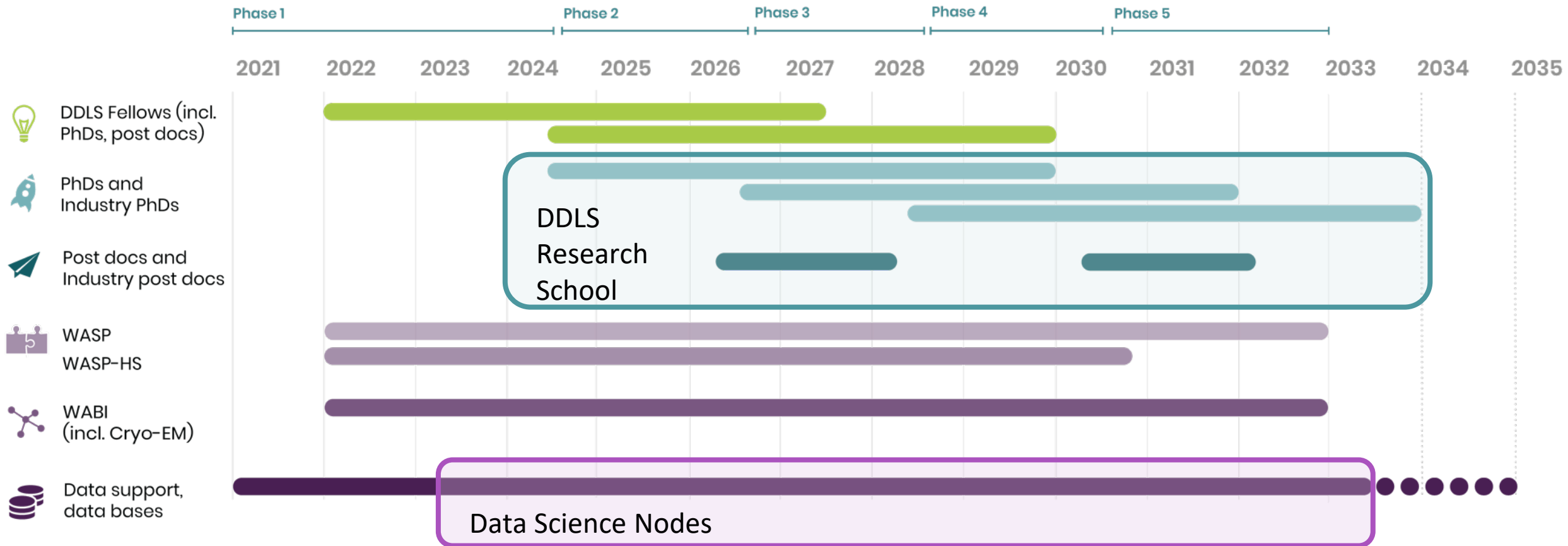
**WASP—HS**



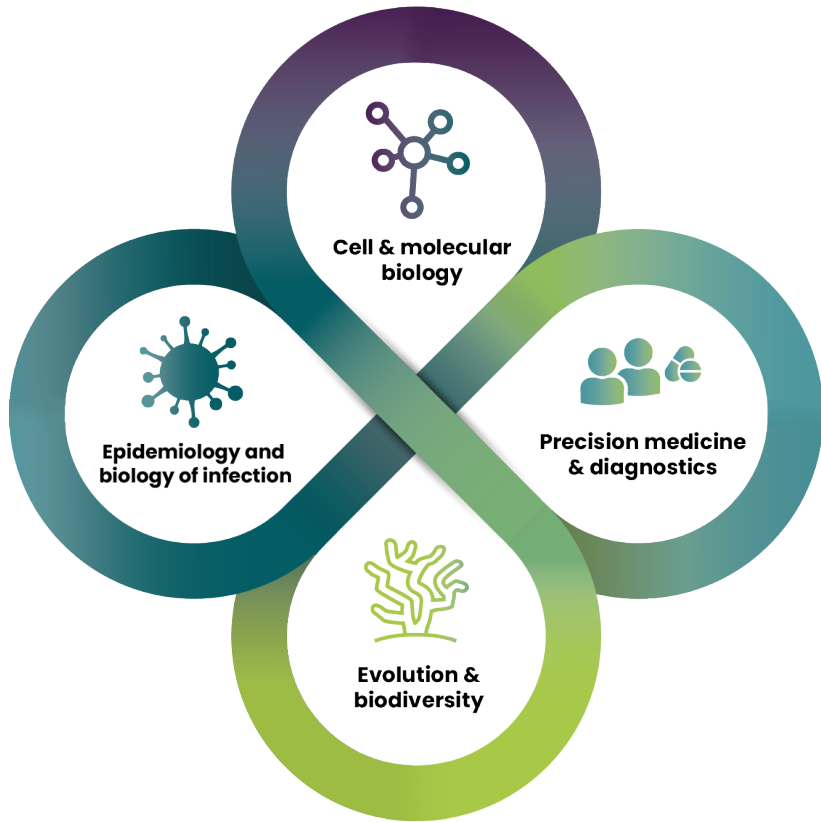
# Vision: The future of life science is data-driven

|                                |  |  |   |
|--------------------------------|--|--|---|
| Recruitment                    |  DDLS Fellows (incl. PhDs, post docs) | <b>39 DDLS Fellows</b><br><b>78 PhDs and 78 postdocs</b> |  <b>Integration</b> |
| Education                      |  PhDs and Industry PhDs               | <b>140 PhDs in academia and 45 industry PhDs</b>         |   |
| Training & networking          |  Post docs and Industry post docs     | <b>90 postdocs and 45 industry postdocs</b>              |   |
| Data, AI collab society impact |  WASP<br>WASP-HS                      | <b>210 MSEK WASP</b><br><b>35 MSEK WASP- HS</b>          |   |
| Bioinfo & comp capabilities    |  WABI (incl. Cryo-EM)                | <b>235 MSEK</b>  |   |
| Data nodes, FAIR, AI, compute  |  Data support, data bases           | <b>670 MSEK</b>  |   |

# Overall 12-year plan for the DDLS program



# Building a DDLS community in Sweden in four research areas



Strategic research areas

13 PIs

Precision Medicine & Diagnostics



UMU, SLU

10 PIs

Epidemiology & biology of infection



Cell & Molecular Biology

9 PIs



UU, SLU

KI, KTH, SU, NRM

GU, CTH

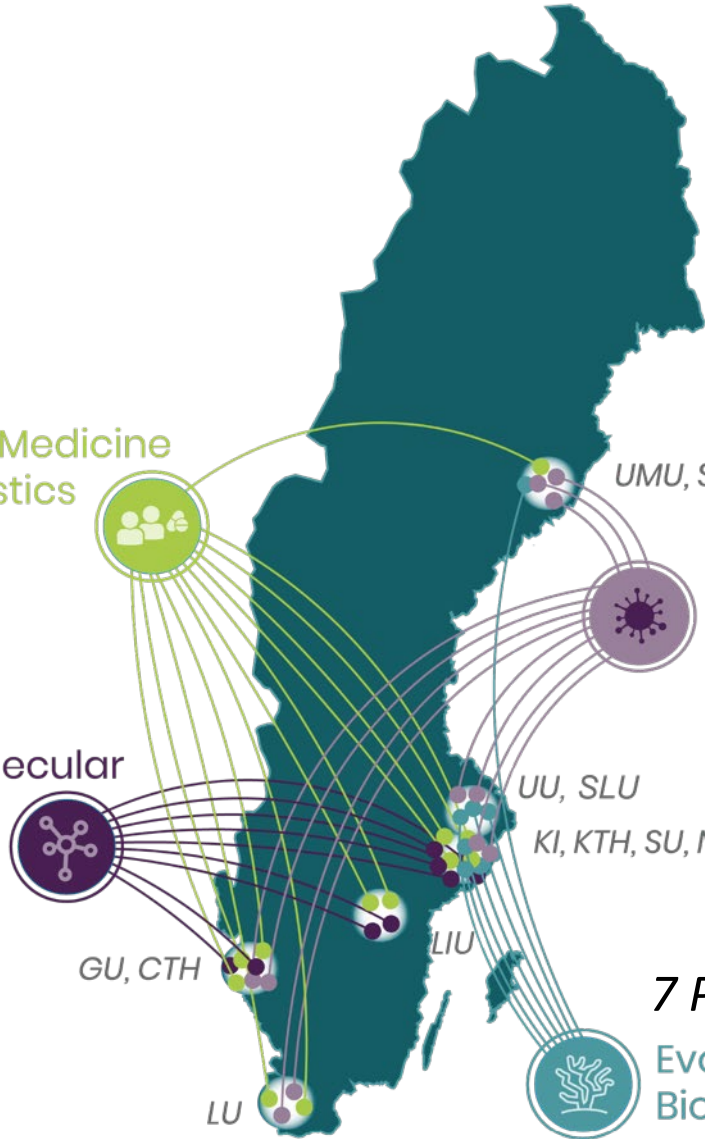
LIU

7 PIs

Evolution & Biodiversity



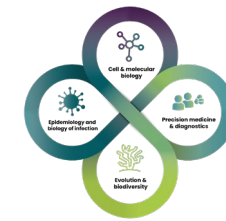
LU





# DDLS Fellows Phase 1

Phase 2 recruitment:  
Summer 2023 ->



Updated: November, 2022



## Cell & molecular biology



**Nicholas Pearce**  
*Linköping University*



**Johan Bengtsson-Palme**  
*Chalmers*



**Juliette Griffie**  
*Stockholm University*



**Wei Ouyang**  
*KTH*



*Stockholm University*

## Epidemiology & biology of infection



**Laura Carroll**  
*Umeå University*



**Thomas van Boeckel**  
*Göteborg University*



**Luisa W. Hugerth**  
*Uppsala University*



**Camila Consiglio**  
*Lund University*



*Karolinska Institutet*

## Evolution & biodiversity



**Tom van der Valk**  
*The Swedish Museum of Natural History*



**Tobias Andermann**  
*Uppsala University*



**Kelly Swarts**  
*SLU, Umeå*

## Precision medicine & diagnostics



**Wen Zhong**  
*Linköping University*



**Clemens Wittenbecher**  
*Chalmers*



**Fredrik Edfors**  
*KTH*



**Jakob Vogel**  
*Lund University*



**Abhishek Niroula**  
*Göteborg University*



*Karolinska Institutet*



*Umeå University*

# DDLs is coordinated by SciLifeLab and decisions made by the national board

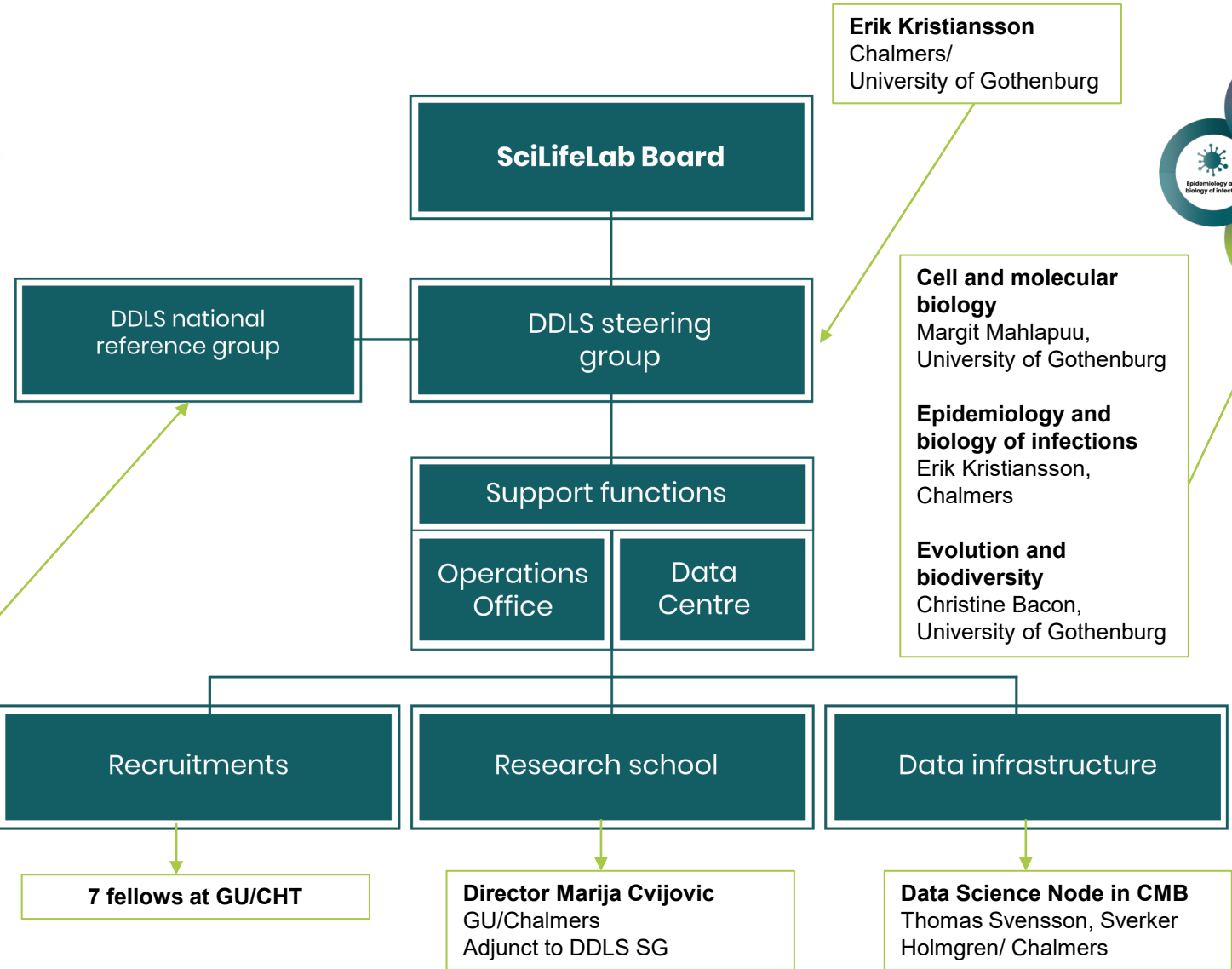


## Key contributions by GU/CHT



**Ann-Sofie Cans**, Chalmers  
(deputy: Ross King)

**Gustav Smith**, University of Gothenburg  
(deputy: Margit Mahlapuu)

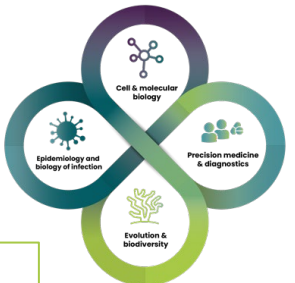


**Erik Kristiansson**  
Chalmers/  
University of Gothenburg

**Cell and molecular biology**  
Margit Mahlapuu,  
University of Gothenburg

**Epidemiology and biology of infections**  
Erik Kristiansson,  
Chalmers

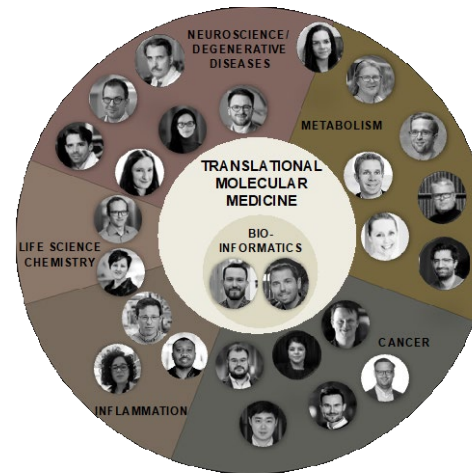
**Evolution and biodiversity**  
Christine Bacon,  
University of Gothenburg



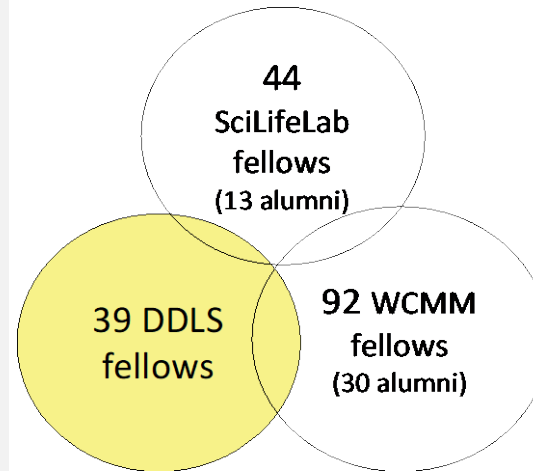
# Wallenberg Centres for Molecular Medicine

Initiative from Knut and Alice Wallenberg Foundation, KAW

- Year 2015 – 2024 + prolongation for 2025 – 2028
- Co-operation between the four universities and their hospital regions. In Gothenburg, also AstraZeneca and more recently OligoNova, are included.
- Mission: recruiting top PIs and connecting strong research environments in molecular medicine in Sweden.
- Current status: Since 2015, over 125 new group leaders in molecular medicine have been recruited nationally.
- A joint Fellows Program was created 2017 together with SciLifeLab - **Academic Leaders in Life Science (PALS)** - which creates a national network of successful young academic group leaders.



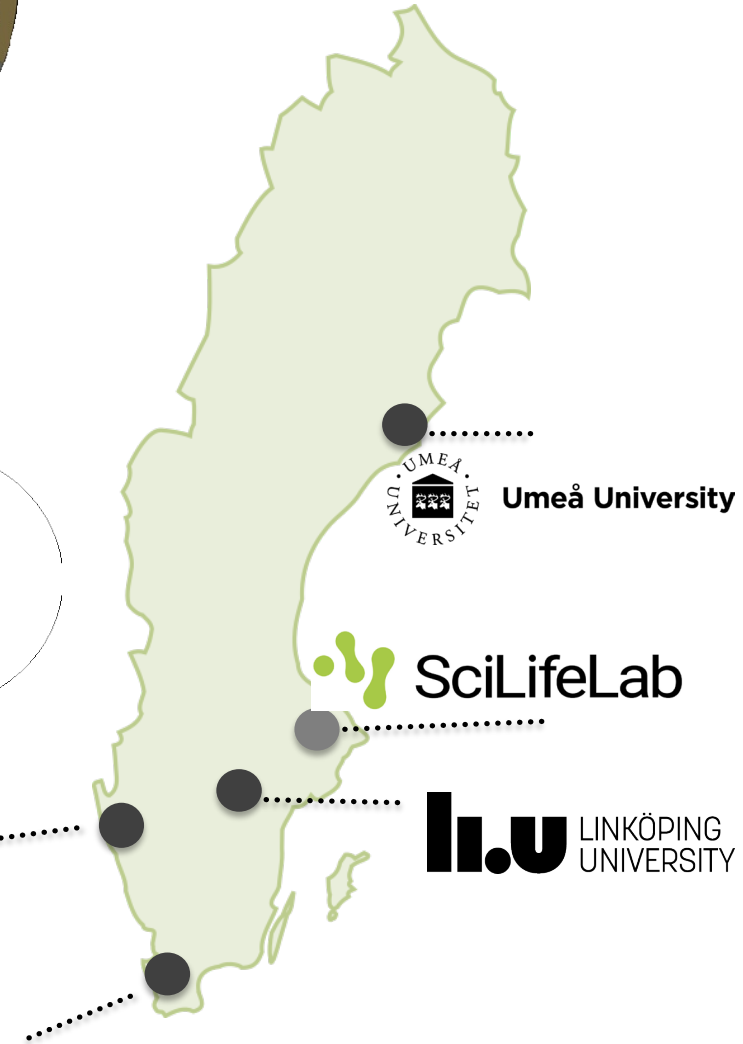
WCMTM in Gothenburg: 26 PI with over 150 researchers in the teams



UNIVERSITY OF  
GOTHENBURG



LUND UNIVERSITY





Thank you all for listening



*Knut and Alice  
Wallenberg  
Foundation*

