



# SciLifeLab Gothenburg

Elisabet Carlsohn, Site Director, and Maria Smedh, Site Coordinator



**CHALMERS**  
UNIVERSITY OF TECHNOLOGY



UNIVERSITY OF GOTHENBURG

# SciLifeLab Gothenburg organization



**SciLifeLab site**

Coordinator 80%  
Data support 50%

Head of units SciLifeLab /Scientific directors  
Representatives for WCMTM and DDLS/ DSN  
SciLifeLab group leaders

Overview of Gothenburg site  
⇒ Poster 26



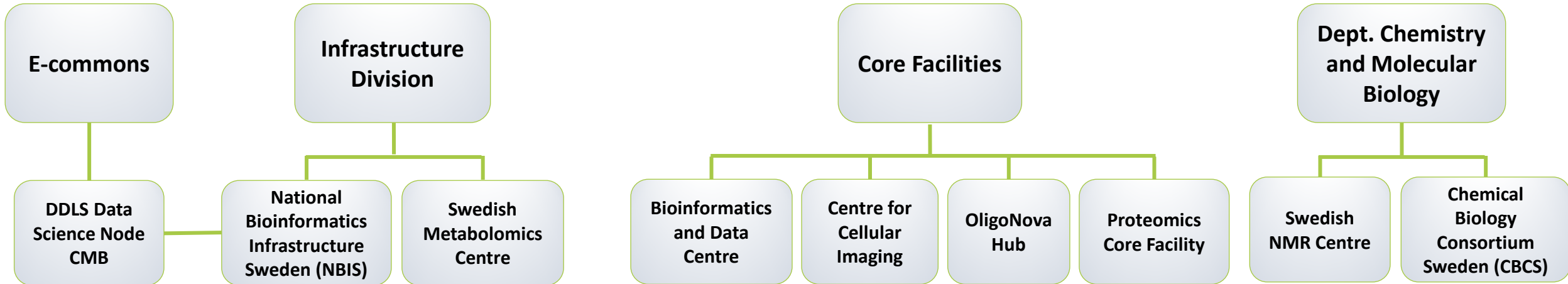
UNIVERSITY OF  
GOTHENBURG



Dept. of Physics    Dept. of Life Science

Sahlgrenska Academy

Faculty of Science



# SciLifeLab Gothenburg - our concept



- Increase the visibility and accessibility to SciLifeLab's infrastructures, calls and programs for researchers at Chalmers, GU and VGR.
- Increase the national / regional utilization rate of existing local infrastructures.
- Enable new collaborations and scientific networks by integrating the research infrastructures into translational research areas (SciLifeLab, University of Gothenburg, Chalmers, VGR, WCMTM, DDLS).
- Establish clear communication between the SciLifeLab infrastructure and the local partners (University of Gothenburg and Chalmers) for strong multilevel interactions.
- Create a cohesive local platform for increased interaction between SciLifeLab, existing locally present national infrastructures e.g. BioMS, NMI, PPS, GMS, BIS and participating universities including DDLS.
- Make the research infrastructures more accessible for external actors by presence at GoCo Health Innovation City, Astra Zeneca etc.



# SciLifeLab Gothenburg Units



## **Global proteomics and Glycoproteomics** *Clinical Proteomics & Immunology platform*

The Global proteomics and Glycoproteomics unit is part of the Proteomics Core Facility and the analysis is based on advanced mass spectrometry technologies.

⇒ Poster 1-2



Carina Sihlbom  
HoU PCF

## **Centre for Cellular Imaging** *Cellular & Molecular Imaging platform*

Provides Correlative Array Tomography (CAT) for the Integrated Microscopy Technologies unit and Cryo-EM Screening for the Cryo-EM unit.

⇒ Poster 4-6



Julia Fernandez-Rodriguez  
HoU CCI

## **Swedish NMR Centre** *Integrated Structural Biology platform*

The Gothenburg node has several NMR spectrometers and support many research areas, such as structural biology, metabolomics, chemical biology, material science and small molecule-NMR.

⇒ Poster 3



Cecilia Persson  
HoU NMR

## **Chemical Biology Consortium Sweden** *Chemical Biology & Genome Engineering platform*

Assists with the discovery, development and utilization of small molecules and chemical tools for all life science applications.

⇒ Poster 11-12



Weixiao Yuan  
Wahlgren  
Contact CBCS

# SciLifeLab Gothenburg Units



## OligoNova Hub

*Drug Discovery & Development platform*

Supports the full process from design and synthesis of therapeutic oligonucleotides to evaluation of drug efficiency and toxicity.

⇒ Poster 17



Dmitri Ossipov  
HoU  
Oligonucleotide  
Chemistry



Mario Ruiz  
HoU  
Oligonucleotide  
Biology

## Clinical Genomics Gothenburg

*Clinical Genomics platform*

CGG is part of Bioinformatics and Data Centre and provides sequencing and bioinformatics support for clinical research and clinical implementation projects with a focus on NGS.



Marcela Davila  
HoU CGG



Per Sikora  
HoU BDC

⇒ Poster 29-30

## Swedish Metabolomics Centre

*Metabolomics platform*

The Gothenburg node of SMC is part of Chalmers Mass Spectrometry Infrastructure and is specialized in analyzing metabolites with advanced mass spectrometry based methods.

⇒ Poster 22



Otto Savolainen  
HoU Metabolomics

## National Bioinformatics Infrastructure Sweden (NBIS)

*Bioinformatics platform*

With over seventy staff members, and around 10 located in Gothenburg, NBIS provides bioinformatics support, infrastructure and training.



Thomas Svensson  
HoU NBIS

⇒ Exhibition H

## DDLs Data Science Node

Chalmers has been selected to host the DSN for the strategic research area "Cell and Molecular Biology"



Sverker Holmgren  
HoU DSN

⇒ Exhibition G

# Site coordination, office and meeting point



“The overall mandate is to coordinate SciLifeLab activities at each site but also to function as ambassadors for SciLifeLab as a whole.”

- ⇒ Increase accessibility to, and usage of, SciLifeLab's infrastructures, calls and programs for researchers and students at University of Gothenburg, Chalmers and Region Västra Götaland.
- ⇒ Increase Gothenburg contribution to SciLifeLab as a whole
- ⇒ Increase the national usage of the local SciLifeLab infrastructure units

View from public corridor



Office and lounge area



Meeting room



## Contact us!

E-mail: [gothenburg@scilifelab.se](mailto:gothenburg@scilifelab.se)

Local web page: [gu.se/en/scilifelab](http://gu.se/en/scilifelab)

# Welcome to new SciLifeLab group leaders

*Researchers with highly strategic and operational importance for the development of the research infrastructure*



Anna  
Winqvist



Cecilia  
Engdahl



Davide  
Angeletti



Eduard  
Kerkhoven



Vladislav  
Orekhov



Mattias  
Svensson



Jörg  
Hanreider



Lars  
Palmqvist



Lars  
Westberg



Ulrika  
Islander



Gustav  
Smith



Karl  
Brunius



Richard  
Landberg



Ana Luis



Pär  
Matsson

# SciLifeLab group leaders

