

# Swedish Opinion on Nuclear Power 1986–2021

Research project:  
SWEDISH OPINIONS ON ENVIRONMENT,  
ENERGY AND CLIMATE CHANGE (EECC)  
Financed by the Swedish Energy Agency

Sören Holmberg  
June 2022

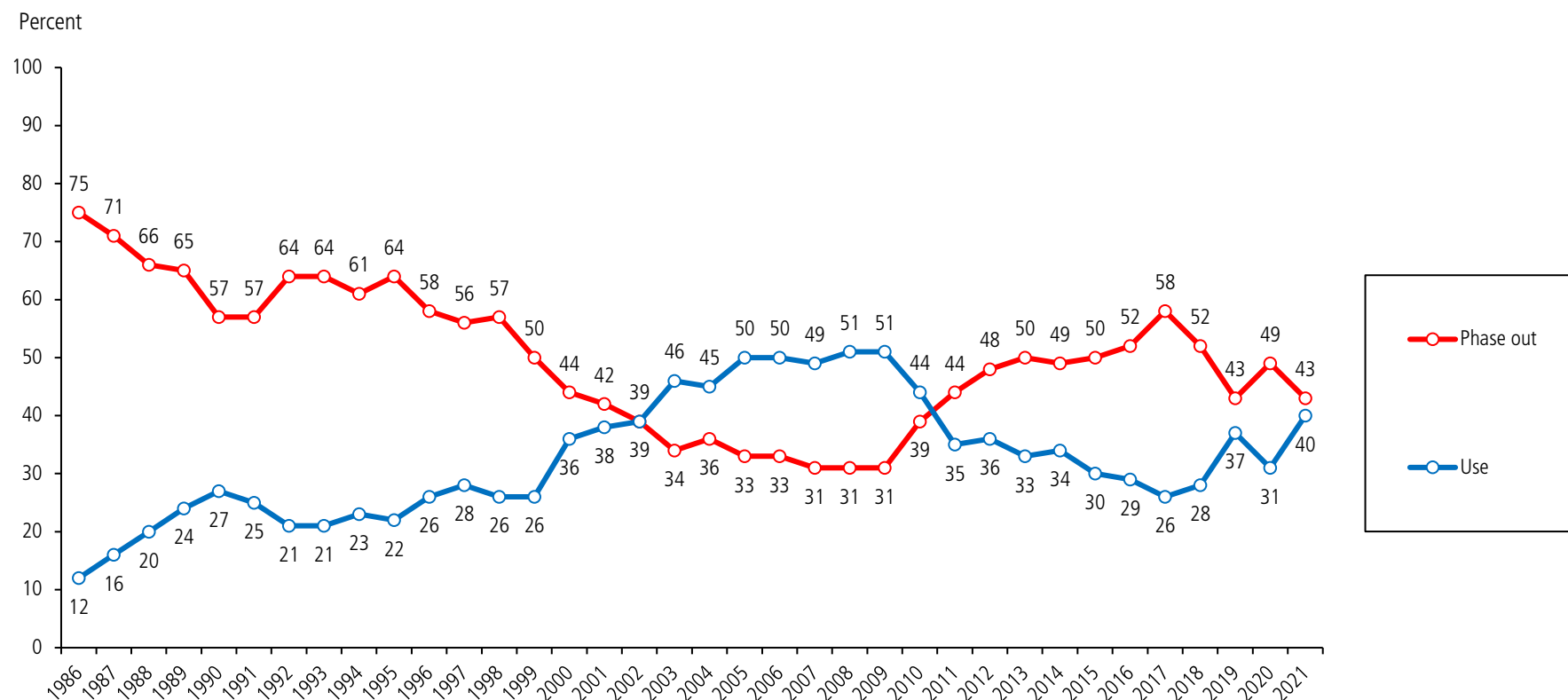


SOM-INSTITUTET  
SAMHÄLLE OPINION MEDIER



GÖTEBORGS UNIVERSITET

# Figure 1 Swedes on the Use of Nuclear Power as an Energy Source

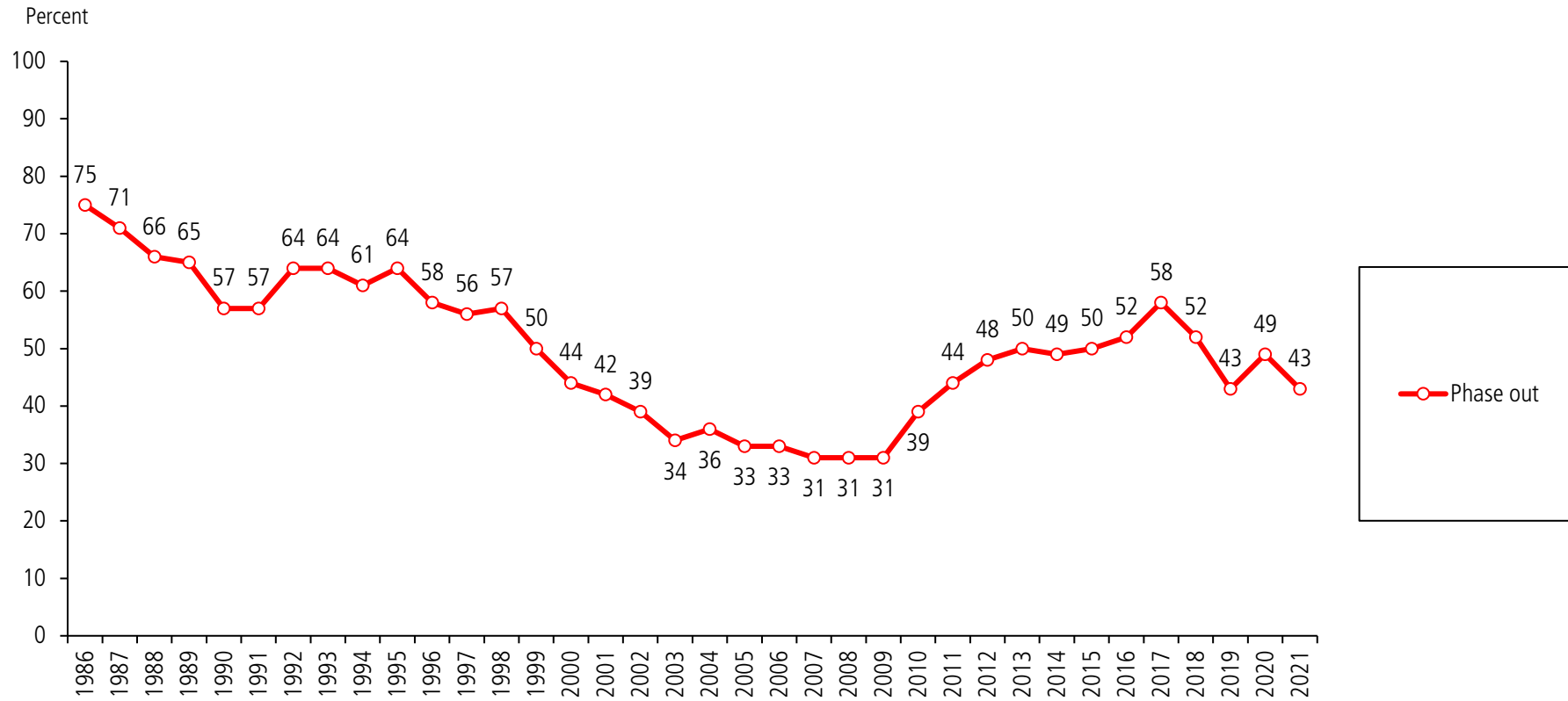


**Data:** The SOM Institute, University of Gothenburg; Annual nationwide surveys in Sweden; Sample size 3 000 persons 16–85 years old; Mail questionnaires with an average response rate of 60 percent. The survey question asks about Swedes’ opinion on the use/long term use of nuclear power as an energy source in Sweden. Response alternatives, including a “no opinion” alternative, are phrased as relatively concrete policy proposals and have varied some over the years (see Appendix). The number of substantial response alternatives was five up until 1996/97, but there after reduced to four. The words “use nuclear power” and “phase out nuclear power” has all the time been used in the response phrasings, making it possible to distinguish between people in favour of using nuclear power versus people in favour of phasing out nuclear power. Changes in question wording occurred between the years 1986-1987 (to question A), 1997-1998 (from question A to B), 1999-2000 (from question B to C), 2004-2005 (from question C to D) and 2009-2010 (from question D to E). See the Appendix for further details. In the figure, the old five substantial response alternative- question is used up until 1997 and after that the new four substantial response alternative-question starting in 1998. In 1986, the “don’t know” response was left out; therefore, the results for this year have been adjusted. The actual results were 84 percent “abolish”, 13 percent “use” and 3 percent no answer.

**Comment:** All respondents are included in the percent calculations.

**Principal investigator:** Sören Holmberg, phone +4631 7861227, e-mail [soren.holmberg@pol.gu.se](mailto:soren.holmberg@pol.gu.se). Data processed by Erik Jönsson.

## Figure 2 Percent Swedes in Favour of Phasing Out Nuclear Power

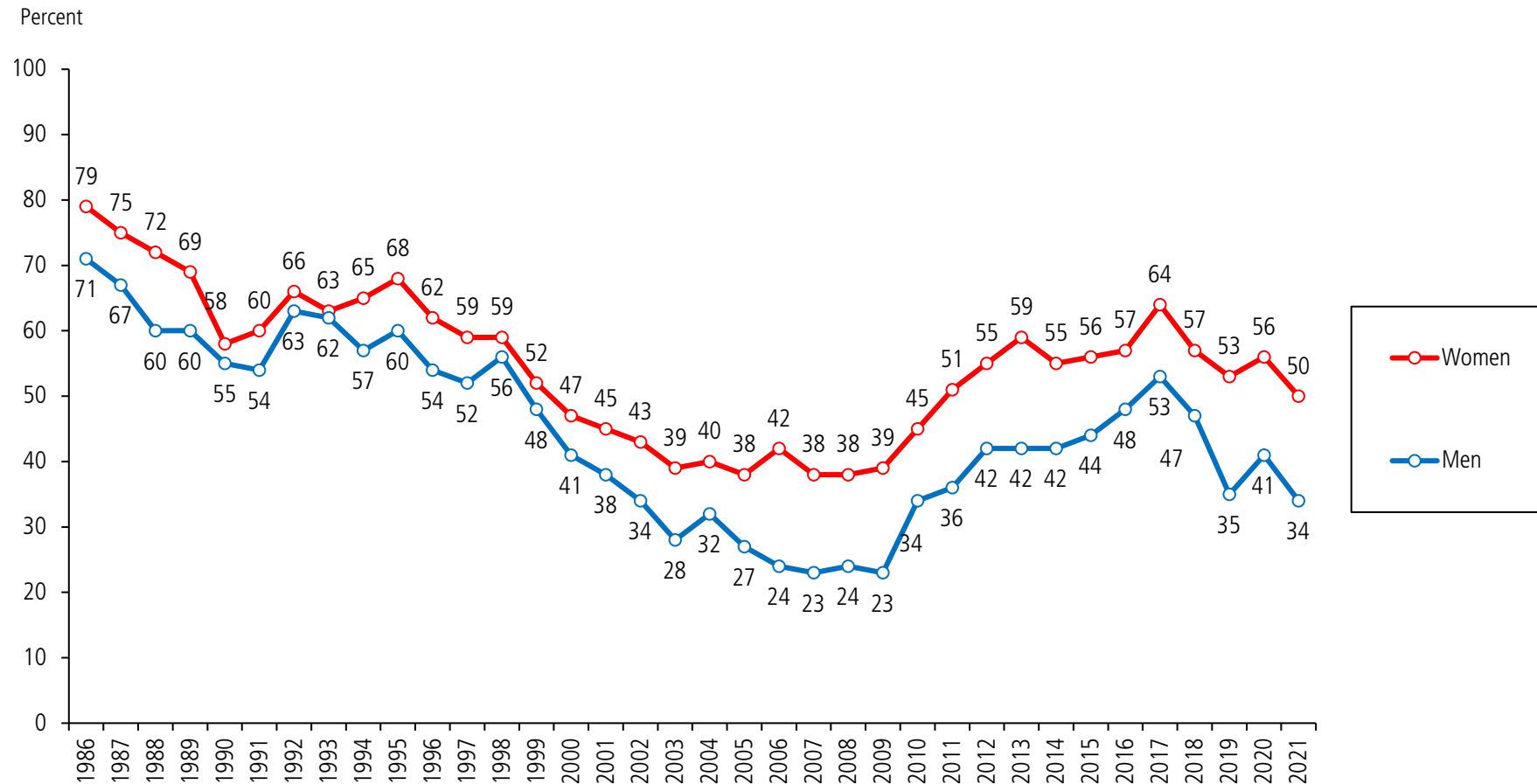


**Data:** The SOM Institute, University of Gothenburg; Annual nationwide surveys in Sweden.

**Comment:** All respondents are included in the percent calculations.

**Principal investigator:** Sören Holmberg, phone +4631 7861227, e-mail [soren.holmberg@pol.gu.se](mailto:soren.holmberg@pol.gu.se). Data processed by Erik Jönsson.

### Figure 3 Percent in Favour of Phasing Out Nuclear Power among Swedish Women and Men

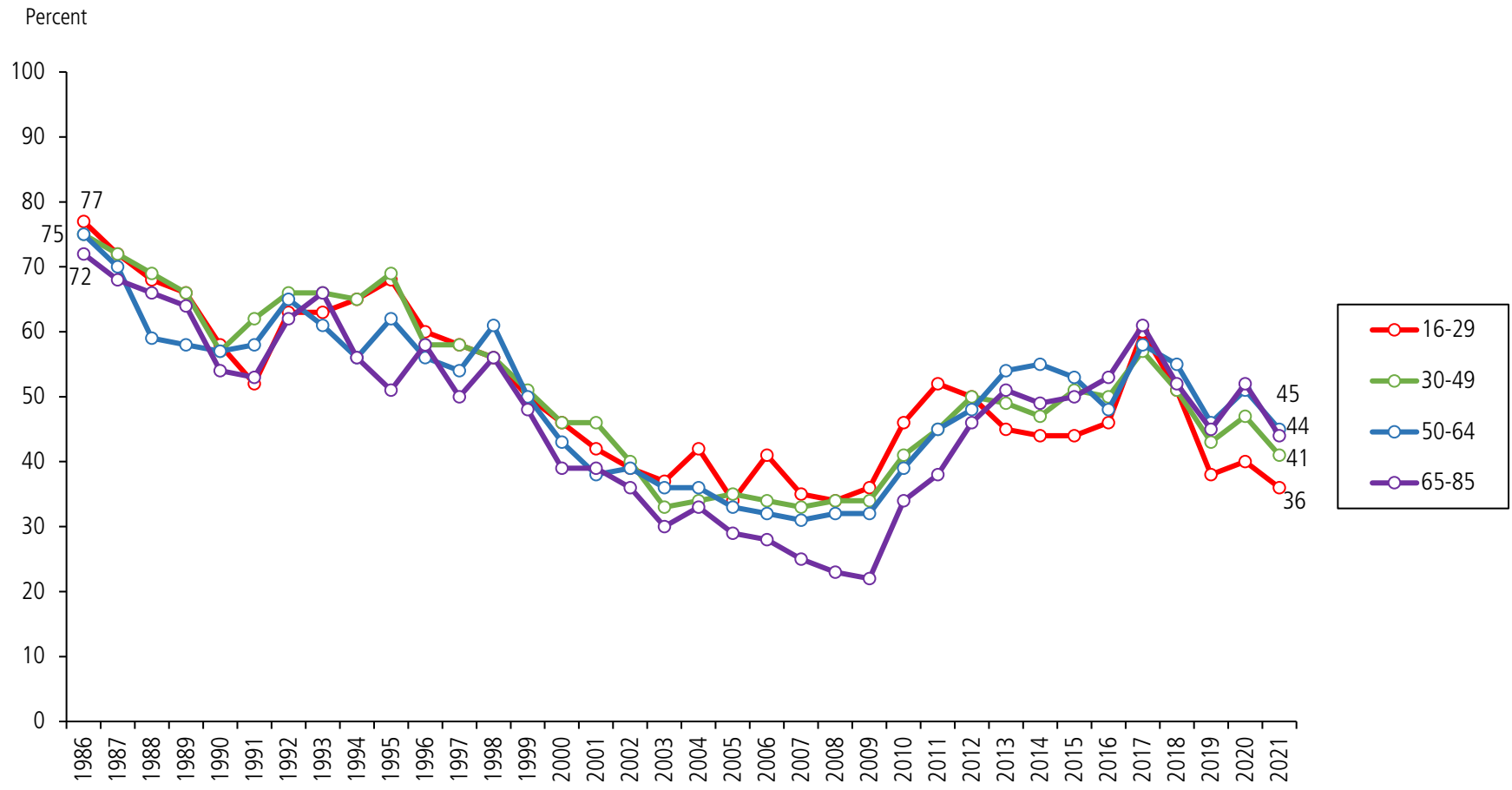


**Data:** The SOM Institute, University of Gothenburg; Annual nationwide surveys in Sweden.

**Comment:** All respondents are included in the percent calculations.

**Principal investigator:** Sören Holmberg, phone +4631 7861227, e-mail [soren.holmberg@pol.gu.se](mailto:soren.holmberg@pol.gu.se). Data processed by Erik Jönsson.

# Figure 4 Percent in Favour of Phasing Out Nuclear Power among Swedes in Different Age Groups

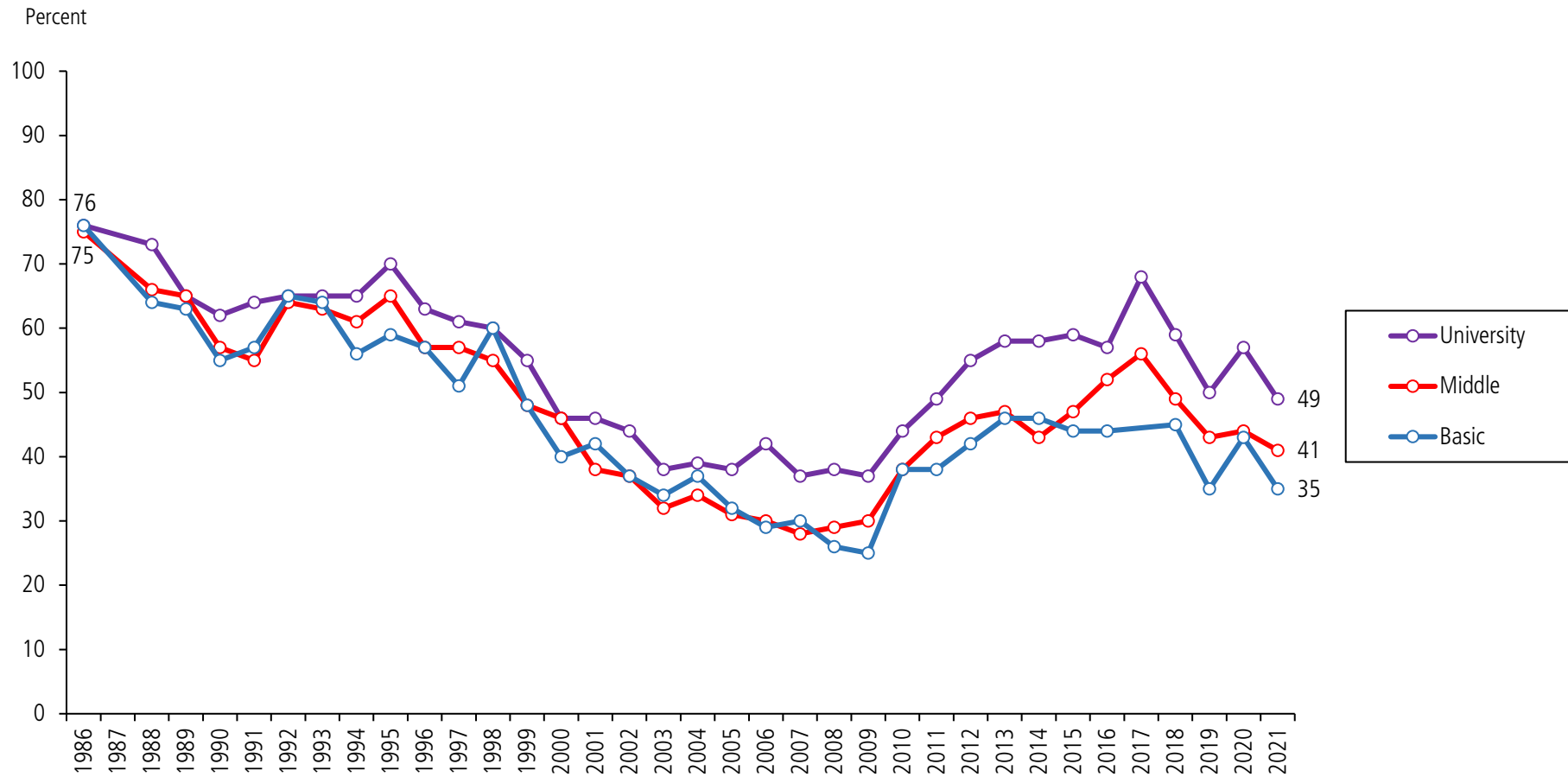


**Data:** The SOM Institute, University of Gothenburg; Annual nationwide surveys in Sweden.

**Comment:** All respondents are included in the percent calculations.

**Principal investigator:** Sören Holmberg, phone +4631 7861227, e-mail [soren.holmberg@pol.gu.se](mailto:soren.holmberg@pol.gu.se). Data processed by Erik Jönsson.

# Figure 5 Percent in Favour of Phasing Out Nuclear Power among Swedes in Different Educational Groups

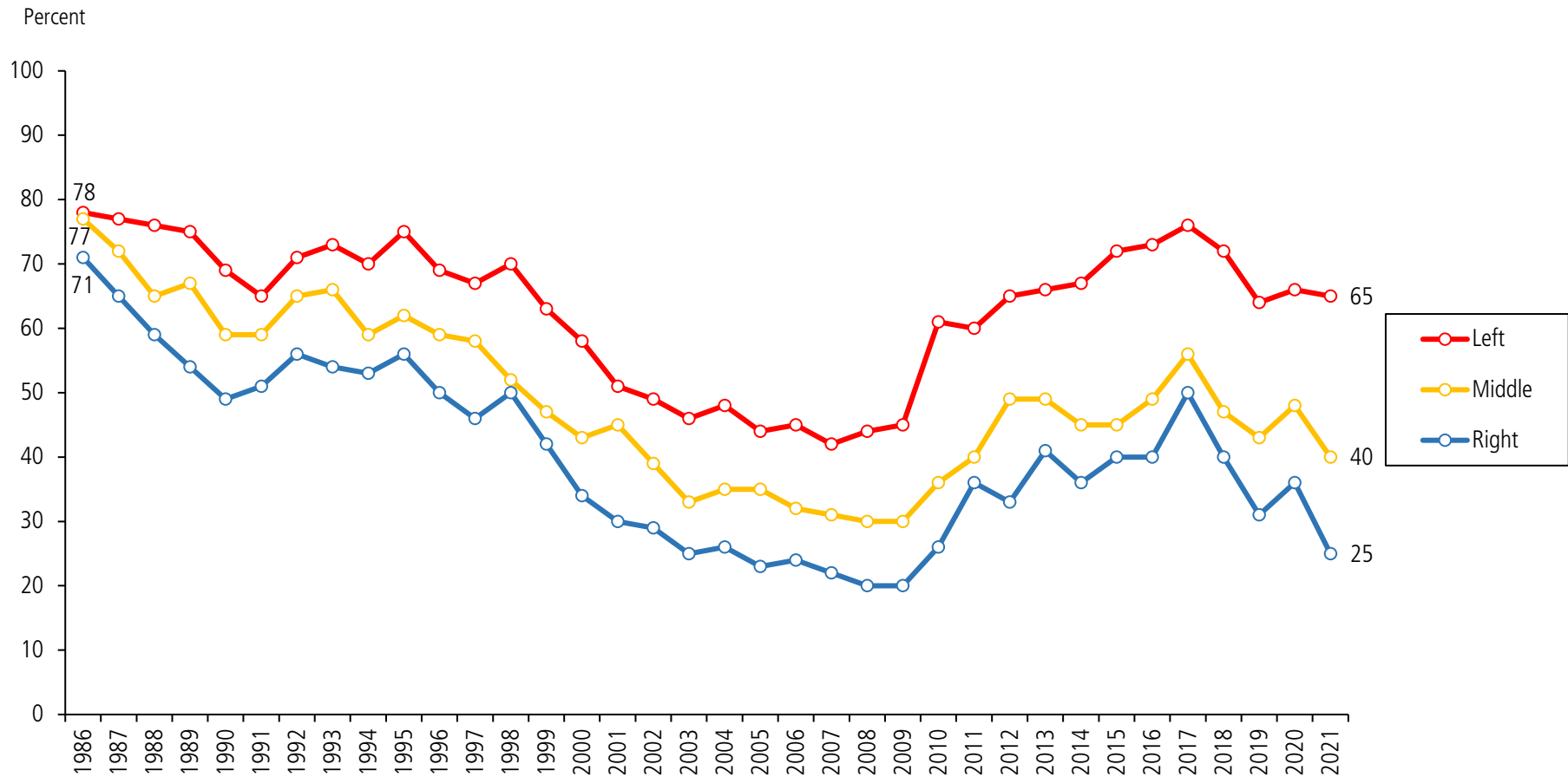


**Data:** The SOM Institute, University of Gothenburg; Annual nationwide surveys in Sweden.

**Comment:** All respondents are included in the percent calculations.

**Principal investigator:** Sören Holmberg, phone +4631 7861227, e-mail [soren.holmberg@pol.gu.se](mailto:soren.holmberg@pol.gu.se). Data processed by Erik Jönsson.

# Figure 6 Percent in Favour of Phasing Out Nuclear Power among Swedes with Different Ideological Self-Placements

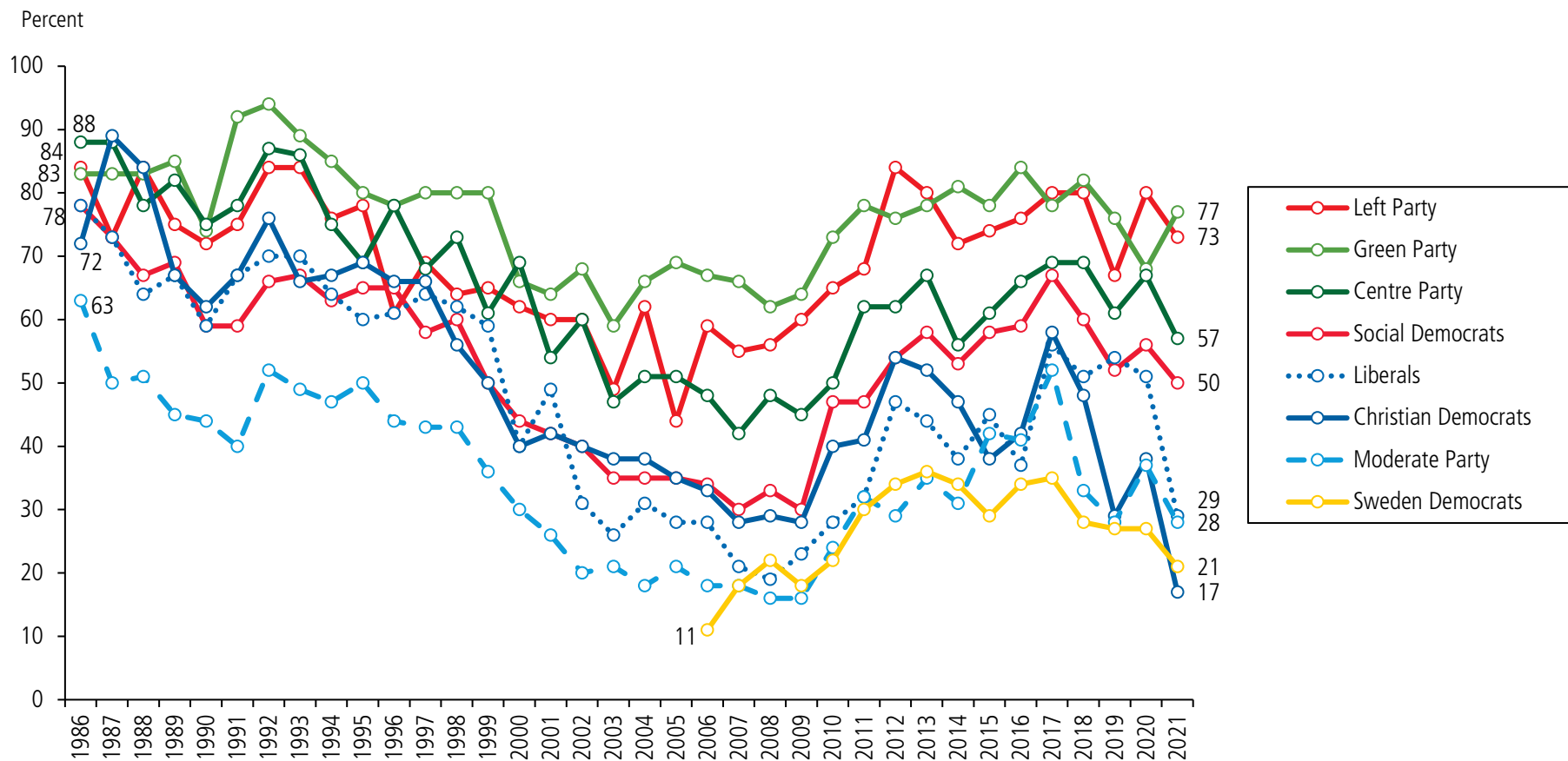


**Data:** The SOM Institute, University of Gothenburg; Annual nationwide surveys in Sweden.

**Comment:** All respondents are included in the percent calculations.

**Principal investigator:** Sören Holmberg, phone +4631 7861227, e-mail [soren.holmberg@pol.gu.se](mailto:soren.holmberg@pol.gu.se). Data processed by Erik Jönsson.

# Figure 7 Percent in Favour of Phasing Out Nuclear Power among Swedes with Different Party Sympathies



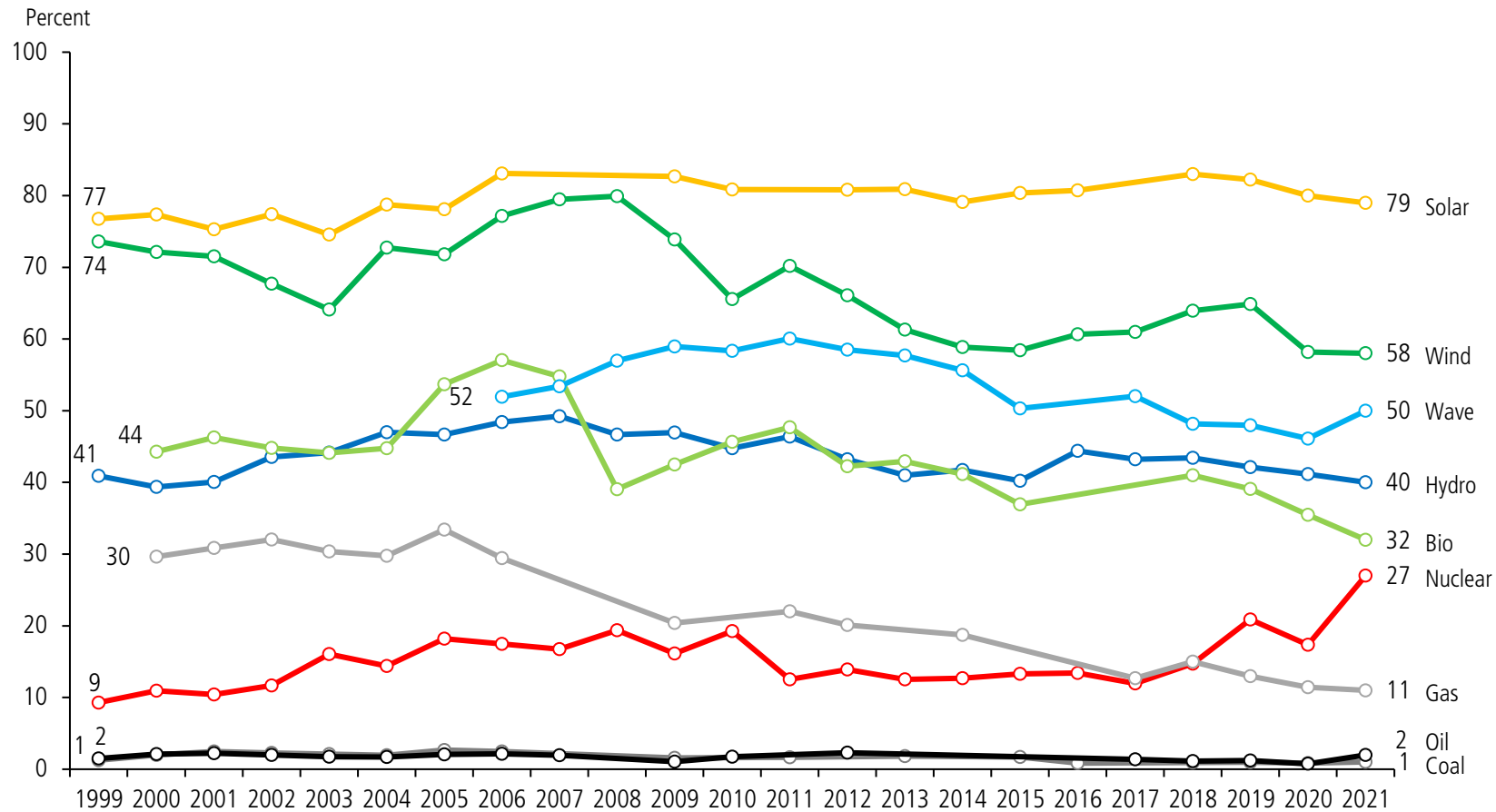
**Data:** The SOM Institute, University of Gothenburg; Annual nationwide surveys in Sweden.

**Comment:** All respondents are included in the percent calculations. The results for Feminist Initiative are 82 percent in 2014, 77 percent in 2015, 82 percent in 2016, 85 percent 2017 and 78 percent 2018.

**Principal investigator:** Sören Holmberg, phone +4631 7861227, e-mail soren.holmberg@pol.gu.se. Data processed by Erik Jönsson.



# Figure 8 Percent Swedes Who Think Sweden – More than Today – Should Go For Different Energy Sources



**Data:** The SOM Institute, University of Gothenburg; Annual nationwide surveys in Sweden.

**Comment:** See question I in Appendix. Percentages are calculated among respondents who answered the question for the different energy sources. The results for biofuel and gas in 1999 were 29 and 21 percent, respectively. Due to a suspected context effect in the questionnaire, the results are not presented in the figure.

**Principal investigator:** Sören Holmberg, phone +4631 7861227, e-mail [soren.holmberg@pol.gu.se](mailto:soren.holmberg@pol.gu.se). Data processed by Erik Jönsson.

# **Appendix**

## **Swedish Opinion on Nuclear Power**

**Results from Different Measurements  
by the SOM Institute  
1986–2021**

**Research project:  
SWEDISH OPINIONS ON ENVIRONMENT,  
ENERGY AND CLIMATE CHANGE (EECC)  
Financed by the Swedish Energy Agency  
Erik Jönsson  
June 2022**

# Swedish Opinion on Nuclear Power 1986-2021

**Question A:** After the 1980 Referendum, Parliament decided that nuclear power should be phased out in Sweden by 2010. What is your opinion on the use of nuclear power in Sweden?

	1986	1987	1988	1989	1990	1991	1992	1993	1994	1995	1996	1997
Stop nuclear power immediately	15	8	7	6	5	5	5	7	6	5	5	4
Phase out nuclear power faster than by 2010	27	18	16	12	7	10	12	12	10	8	6	6
Phase out nuclear power by 2010	28	27	21	23	17	20	24	24	24	23	20	16
Phase out nuclear power but not as fast as by 2010	17	20	24	25	29	24	25	23	23	30	31	32
Use nuclear power, do not phase out	13	17	21	25	28	26	21	21	24	23	27	30
No definite opinion	–	10	11	9	14	15	13	13	13	11	11	12
Sum percent	100	100	100	100	100	100	100	100	100	100	100	100
Number of respondents	1 624	1 625	1 594	1 535	1 535	1 520	1 858	1 827	1 657	1 716	1 681	1 678
Percent no answer	3	3	3	3	3	3	2	2	3	3	5	4
Number of respondents with no answer	54	47	49	43	47	53	31	30	45	61	98	76

**Question A:** After the 1980 Referendum, Parliament decided that nuclear power should be phased out in Sweden by 2010. What is your opinion on the use of nuclear power in Sweden?

	1986	1987	1988	1989	1990	1991	1992	1993	1994	1995	1996	1997
Stop nuclear power immediately	15	8	6	6	5	5	5	6	6	5	5	4
Phase out nuclear power faster than by 2010	26	17	15	12	7	9	12	12	10	8	5	6
Phase out nuclear power by 2010	27	27	21	23	17	19	23	23	23	22	19	16
Phase out nuclear power but not as fast as by 2010	16	19	24	24	28	24	24	23	22	29	29	30
Use nuclear power, do not phase out	13	16	20	24	27	25	21	21	23	22	26	28
No definite opinion/ no answer	3	13	14	11	16	18	15	15	16	14	16	16
Sum percent	100	100	100	100	100	100	100	100	100	100	100	100
Number of respondents	1 624	1 673	1 643	1 578	1 582	1 520	1 889	1 857	1 702	1 777	1 779	1 764

**Question B:** What is your opinion on the long-term use of nuclear power as an energy source in Sweden?

	1996	1997	1998	1999
Phase out nuclear power by 2010	24	20	17	17
Phase out nuclear power but use the 12 reactors we have until they are worn out	32	34	42	37
Use nuclear power and renew the 12 reactors we have when they are worn out, making sure that we have 12 operational reactors in the future	19	21	21	21
Use nuclear power and go for more than 12 reactors in the future	6	7	5	7
No definite opinion	19	18	15	18
Sum percent	100	100	100	100
Number of respondents	1 682	1 649	1 692	1 587
Percent no answer	5	6	3	7
Number of respondents with no answer	97	105	48	116

**Question B:** What is your opinion on the long-term use of nuclear power as an energy source in Sweden?

	1996	1997	1998	1999
Phase out nuclear power by 2010	22	19	17	16
Phase out nuclear power but use the 12 reactors we have until they are worn out	31	32	40	34
Use nuclear power and renew the 12 reactors we have when they are worn out, making sure that we have 12 operational reactors in the future	18	19	21	19
Use nuclear power and go for more than 12 reactors in the future	6	7	5	7
No definite opinion/no answer	23	23	17	24
Sum percent	100	100	100	100
Number of respondents	1 779	1 754	1 740	1 703

**Question C:** What is your opinion on the long-term use of nuclear power as an energy source in Sweden?

	2000	2001	2002	2003	2004
Phase out nuclear power by 2010	15	14	13	12	12
Phase out nuclear power but use the reactors we have until they are worn out	31	30	28	23	26
Use nuclear power and renew the reactors we have when they are worn out, but do not build additional reactors	27	31	30	32	32
Use nuclear power and go for additional reactors in the future	11	10	11	16	16
No definite opinion	16	15	18	17	14
Sum percent	100	100	100	100	100
Number of respondents	1 616	1 625	1 689	1 746	1 680
Percent no answer	5	7	5	4	5
Number of respondents with no answer	88	114	88	70	94

**Question C:** What is your opinion on the long-term use of nuclear power as an energy source in Sweden?

	2000	2001	2002	2003	2004
Phase out nuclear power by 2010	15	14	12	12	11
Phase out nuclear power but use the reactors we have until they are worn out	29	28	27	22	25
Use nuclear power and renew the reactors we have when they are worn out, but do not build additional reactors	26	29	28	31	30
Use nuclear power and go for additional reactors in the future	10	9	11	15	15
No definite opinion/no answer	20	20	22	20	19
Sum percent	100	100	100	100	100
Number of respondents	1 704	1 739	1 777	1 818	1 774

**Question D: What is your opinion on the long-term use of nuclear power as an energy source in Sweden?**

	2005	2006	2007	2008	2009	2010	2011
Phase out nuclear power very soon	10	10	9	9	9	9	11
Phase out nuclear power but use the reactors we have until they are worn out	25	24	24	23	23	23	26
Use nuclear power and renew the reactors we have when they are worn out, but do not build additional reactors	35	34	32	31	33	33	33
Use nuclear power and go for additional reactors in the future	17	17	19	21	19	21	15
No definite opinion	13	15	16	16	16	14	15
Sum percent	100	100	100	100	100	100	100
Number of respondents	1 655	1 591	3 290	3 180	4 824	1 584	1 479
Percent no answer	4	2	4	2	2	4	3
Number of respondents with no answer	69	38	145	79	102	68	52

**Question D: What is your opinion on the long-term use of nuclear power as an energy source in Sweden?**

	2005	2006	2007	2008	2009	2010	2011
Phase out nuclear power very soon	9	10	8	9	9	8	10
Phase out nuclear power but use the reactors we have until they are worn out	24	23	23	22	22	22	26
Use nuclear power and renew the reactors we have when they are worn out, but do not build additional reactors	33	33	31	30	32	32	32
Use nuclear power and go for additional reactors in the future	17	17	18	21	19	20	14
No definite opinion/no answer	17	17	20	18	18	18	18
Sum percent	100	100	100	100	100	100	100
Number of respondents	1 724	1 629	3 435	3 259	4 926	1 652	1 531

**Question E:** What is your opinion on the long-term use of nuclear power as an energy source in Sweden?

	2010	2011	2012	2013	2014	2015	2016	2017	2018	2019
Phase out nuclear power very soon	8	11	12	12	11	13	12	15	12	10
Phase out nuclear power, but make use of the 10 reactors we have until they are worn out	32	35	39	41	39	40	42	45	41	36
Use nuclear power and replace the present reactors with a maximum of 10 new reactors	28	25	26	24	26	22	20	17	18	23
Use nuclear power and build more reactors than the present 10 in the future	17	12	11	10	9	8	10	9	11	14
No opinion	15	17	12	13	15	17	16	14	18	17
Sum percent	100	100	100	100	100	100	100	100	100	100
Number of respondents	1 608	1 528	1 464	1 572	1 658	1 666	1 605	1 779	1 752	1 676
Percent no answer	3	4	4	4	3	4	3	3	2	3
Number of respondents with no answer	45	69	60	72	51	73	45	48	45	54

**Question E:** What is your opinion on the long-term use of nuclear power as an energy source in Sweden?

	2010	2011	2012	2013	2014	2015	2016	2017	2018	2019
Phase out nuclear power very soon	8	10	11	11	11	12	12	14	12	9
Phase out nuclear power, but make use of the 10 reactors we have until they are worn out	31	34	37	39	38	38	40	44	40	34
Use nuclear power and replace the present reactors with a maximum of 10 new reactors	27	24	25	23	25	22	19	17	17	23
Use nuclear power and build more reactors than the present 10 in the future	17	11	11	10	9	8	10	8	11	14
No opinion/no answer	17	21	16	17	17	20	19	17	20	20
Sum percent	100	100	100	100	100	100	100	100	100	100
Number of respondents	1 653	1 597	1 524	1 644	1 709	1 739	1 650	1 827	1 797	1 730

**Question F:** What is your opinion on the long-term use of nuclear power as an energy source in Sweden?

	2020	2021
Phase out nuclear power very soon	10	9
Phase out nuclear power, but make use of the reactors we have until they are worn out	40	35
Use nuclear power and replace the present reactors with a maximum equal to what we have today	20	21
Use nuclear power and build more reactors than what we have today in the future	13	21
No opinion	17	14
Sum percent	100	100
Number of respondents	1 809	1544
Percent no answer	3	4
Number of respondents with no answer	62	66

**Question F:** What is your opinion on the long-term use of nuclear power as an energy source in Sweden?

	2020	2021
Phase out nuclear power very soon	10	9
Phase out nuclear power, but make use of the reactors we have until they are worn out	39	34
Use nuclear power and replace the present reactors with a maximum equal to what we have today	19	20
Use nuclear power and build more reactors than what we have today in the future	12	20
No opinion/no answer	20	17
Sum percent	100	100
Number of respondents	1 871	1 610



**Question G: Keep nuclear power, even after 2010**

	1986	1987	1988	1989	1990	1991	1992	1993	1994	1995	1996	1997
Very good proposal	11	17	23	27	34	24	20	19	20	24	26	–
Fairly good proposal	12	16	17	19	21	23	23	20	21	22	23	–
Neither good or bad	17	20	22	18	20	22	22	22	22	19	21	–
Fairly bad proposal	18	17	15	13	11	13	14	16	16	14	13	–
Very bad proposal	42	30	23	23	14	18	21	23	21	21	17	–
Sum percent	100	100	100	100	100	100	100	100	100	100	100	–
Number of respondents	1 562	1 612	1 567	1 515	1 512	1 498	1 821	1 784	1 641	1 715	1 687	–
Percent no answer	4	4	5	4	4	5	4	4	4	3	5	–
Number of respondents with no answer	62	60	76	63	70	75	68	73	61	62	92	–

**Question G: Keep nuclear power, even after 2010**

	1986	1987	1988	1989	1990	1991	1992	1993	1994	1995	1996	1997
Very good proposal	11	16	22	26	33	22	19	18	19	23	25	–
Fairly good proposal	12	15	16	18	21	22	22	20	21	21	22	–
Neither good or bad	16	19	21	18	19	21	21	21	21	19	20	–
Fairly bad proposal	17	17	14	12	10	13	14	15	15	13	12	–
Very bad proposal	40	29	22	22	13	17	20	22	20	20	16	–
No answer	4	4	5	4	4	5	4	4	4	4	5	–
Sum percent	100	100	100	100	100	100	100	100	100	100	100	–
Number of respondents	1 624	1 672	1 643	1 578	1 582	1 573	1 889	1 857	1 702	1 777	1 779	–

**Question H: Long-term, Sweden should phase out nuclear power**

	1998	1999	2000	2001	2002	2003	2004	2005	2006	2007	2008	2009
Very good proposal	23	22	23	20	18	15	15	14	16	18	17	20
Fairly good proposal	26	24	23	22	24	20	20	21	23	23	24	19
Neither good or bad	21	23	22	25	25	24	24	21	25	26	21	26
Fairly bad proposal	17	17	19	18	18	21	21	23	19	18	23	19
Very bad proposal	13	14	13	15	15	20	20	21	17	16	15	16
Sum percent	100	100	100	100	100	100	100	100	100	100	100	100
Number of respondents	3 446	3 341	1 748	3 428	3 396	3 487	3 398	1 610	1 541	1 576	1 540	1 515
Percent no answer	3	4	5	6	6	5	6	7	5	5	4	4
Number of respondents with no answer	115	70	94	210	210	188	214	114	88	90	58	67

	2010	2011	2012	2013	2014	2015	2016	2017	2018	2019	2020	2021
Very good proposal	20	21	19	23	20	21	21	25	22	18	19	17
Fairly good proposal	19	22	25	23	24	23	24	24	24	21	22	19
Neither good or bad	28	29	29	26	26	25	26	25	21	22	26	20
Fairly bad proposal	17	17	16	16	18	16	17	15	18	19	18	21
Very bad proposal	16	11	11	12	12	15	12	11	15	20	15	23
Sum percent	100	100	100	100	100	100	100	100	100	100	100	100
Number of respondents	1 587	1 463	1 459	3 239	3 284	1 627	3 049	3 275	1 725	1 662	1 808	1 522
Percent no answer	4	4	4	3	3	6	6	10	4	4	3	5
Number of respondents with no answer	65	68	65	111	116	112	192	380	72	68	63	88

**Question H: Long-term, Sweden should phase out nuclear power**

	1998	1999	2000	2001	2002	2003	2004	2005	2006	2007	2008	2009
Very good proposal	22	21	22	19	17	14	14	13	15	17	16	19
Fairly good proposal	25	23	22	21	23	19	19	20	22	22	24	18
Neither good or bad	21	22	21	23	23	23	23	20	23	24	20	25
Fairly bad proposal	16	16	18	17	17	20	20	21	18	17	22	18
Very bad proposal	13	13	12	14	14	19	18	19	16	15	15	16
No answer	3	5	5	6	6	5	6	7	5	5	4	4
Sum percent	100	100	100	100	100	100	100	100	100	100	100	100
Number of respondents	3 561	3 503	1 842	3 638	3 606	3 675	3 612	1 724	1 629	1 666	1 598	1 582

	2010	2011	2012	2013	2014	2015	2016	2017	2018	2019	2020	2021
Very good proposal	20	20	18	23	19	20	19	22	21	17	19	17
Fairly good proposal	18	21	24	22	23	21	23	22	23	21	21	18
Neither good or bad	27	28	28	25	25	24	25	22	21	21	25	18
Fairly bad proposal	16	16	15	16	18	15	16	14	17	19	18	20
Very bad proposal	15	10	11	11	12	14	11	10	14	18	14	22
No answer	4	5	4	3	3	6	6	10	4	4	3	5
Sum percent	100	100	100	100	100	100	100	100	100	100	100	100
Number of respondents	1 652	1 531	1 524	3 350	3 398	1 739	3 241	3 655	1 797	1 730	1 871	1 610

**Question I: During the upcoming 5-10 years, how much should we go for (nuclear power)?**

	1999	2000	2001	2002	2003	2004	2005	2006	2007	2008	2009	2010	2011	2012	2013	2014	2015	2016	2017	2018	2019	2020	2021
More than today	9	11	11	12	16	14	18	18	17	19	16	19	12	14	13	13	13	13	12	15	21	17	27
About as today	34	34	36	37	38	36	36	35	33	31	34	32	30	31	29	29	27	25	23	26	27	24	25
Less than today	26	30	29	29	24	27	24	25	28	26	26	27	29	30	29	29	28	27	30	27	25	26	23
Completely give up (nuclear power)	20	19	18	16	15	16	15	15	15	16	16	14	21	18	20	18	20	23	23	19	15	19	14
No opinion	11	6	6	6	7	7	7	7	7	8	8	8	8	7	9	11	12	12	12	13	12	14	11
Sum percent	100	100	100	100	100	100	100	100	100	100	100	100	100	100	100	100	100	100	100	100	100	100	100
Number of respondents	1592	1573	1611	1624	1713	1634	1633	1544	1559	1517	1524	1568	1431	1437	1540	1603	1593	1541	1696	1708	1642	1747	1501
Percent no answer	7	8	6	9	6	8	5	5	6	5	4	5	7	6	6	6	8	7	7	5	5	7	7
Number of respondents with no answer	111	131	101	153	103	140	91	85	107	81	58	84	100	87	104	103	146	109	131	89	88	124	109

**Question I: During the upcoming 5-10 years, how much should we go for (nuclear power)?**

	1999	2000	2001	2002	2003	2004	2005	2006	2007	2008	2009	2010	2011	2012	2013	2014	2015	2016	2017	2018	2019	2020	2021
More than today	9	10	10	11	15	13	17	17	16	18	15	18	12	13	12	12	12	13	11	14	20	16	25
About as today	31	31	33	34	36	33	34	33	31	29	33	30	28	29	27	28	25	23	21	24	26	23	23
Less than today	25	28	27	26	23	25	23	24	26	25	25	25	27	29	27	27	26	25	28	26	23	24	22
Completely give up (nuclear power)	19	18	17	15	14	15	14	14	14	15	15	14	19	17	19	16	18	21	22	18	14	18	13
No opinion/no answer	16	13	13	14	12	14	12	12	13	13	12	13	14	12	15	17	19	18	18	18	17	19	17
Sum percent	100	100	100	100	100	100	100	100	100	100	100	100	100	100	100	100	100	100	100	100	100	100	100
Number of respondents	1703	1704	1739	1777	1816	1774	1774	1629	1666	1598	1582	1652	1531	1524	1644	1706	1739	1650	1827	1797	1730	1871	1610

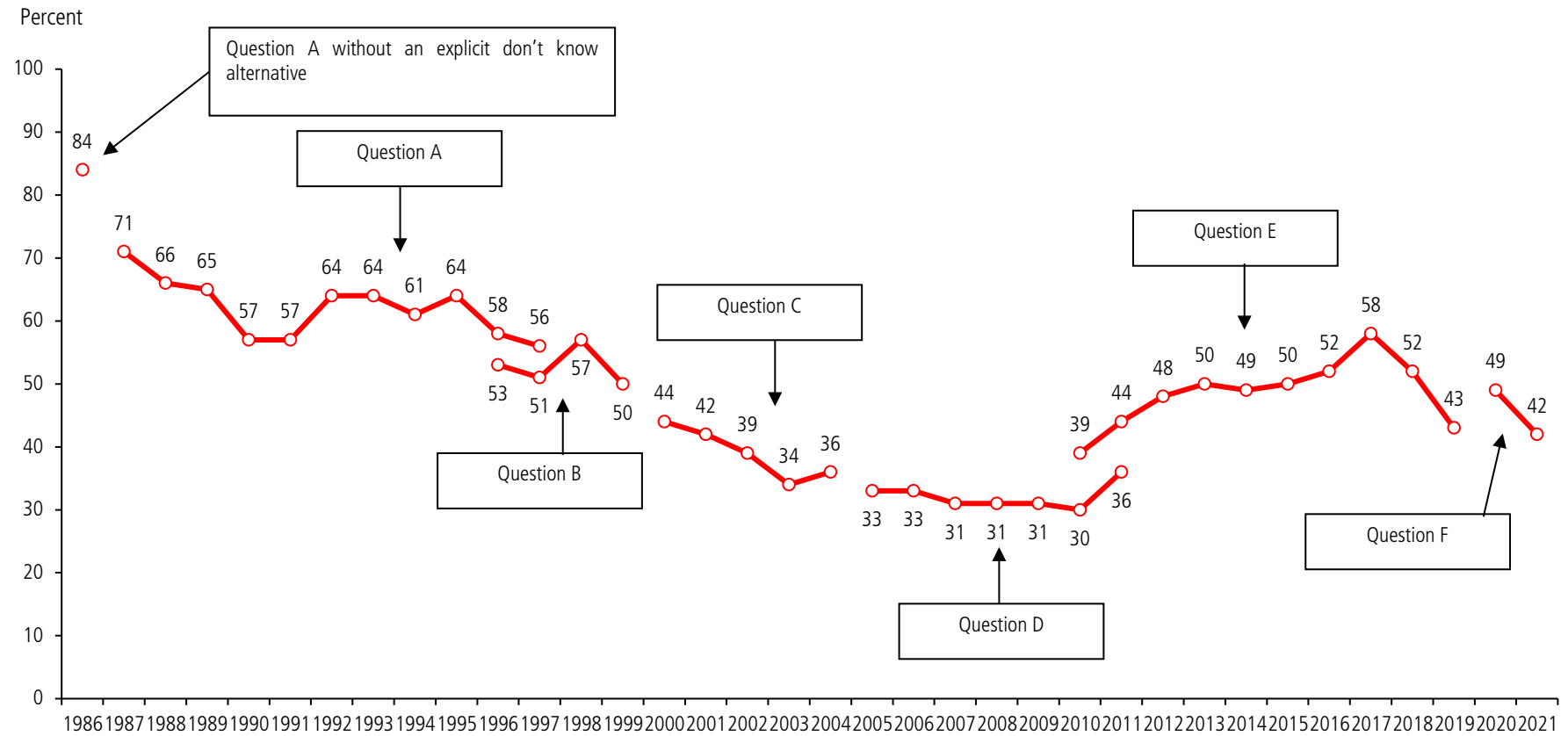
**Question J:** In general, which opinion do you have on the following energy sources? /Nuclear power/

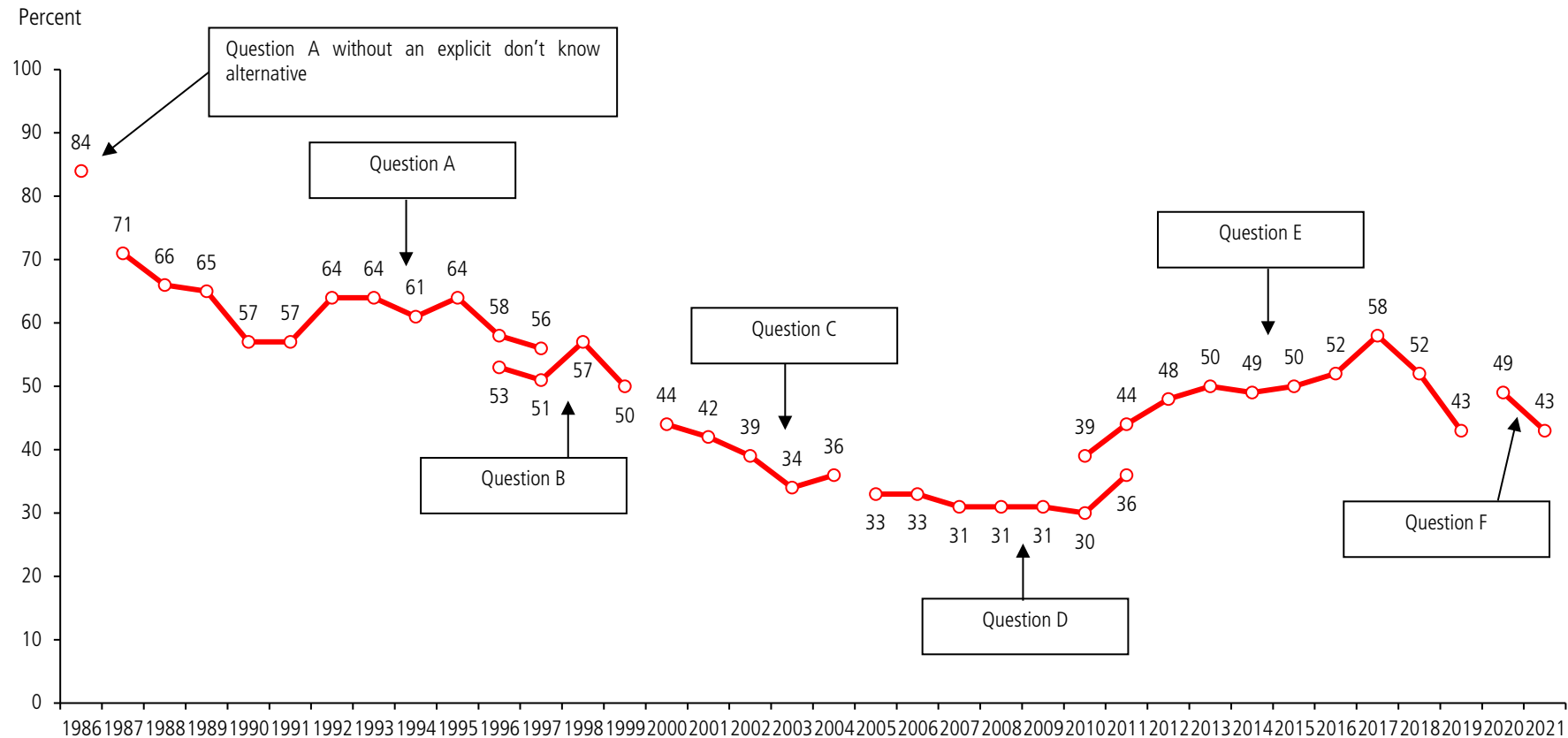
	2012	2013	2014	2015	2016	2017	2018	2019	2020	2021
Very positive	12	11	12	11	12	10	12	16	12	20
Fairly positive	22	21	19	19	18	17	19	22	19	21
Neither positive or negative	24	20	24	23	21	21	21	19	22	21
Fairly negative	20	22	21	19	20	23	20	19	20	17
Very negative	18	20	17	21	21	21	19	16	18	15
No opinion	4	6	7	7	8	8	9	8	9	6
Sum percent	100	100	100	100	100	100	100	100	100	100
Number of respondents	1 452	1 560	1 634	1 633	1 575	1 749	1 741	1 672	1 801	1 508
Positive	34	32	31	30	30	27	31	38	31	41
Negative	38	42	38	40	41	44	39	35	38	32
Difference positive minus negative	-4	-10	-7	-10	-11	-17	-8	+3	-7	+9
Percent no answer	5	5	4	6	5	4	3	3	4	7
Number of respondents with no answer	72	84	75	106	75	78	56	58	70	102

**Question J:** In general, which opinion do you have on the following energy sources? /Nuclear power/

	2012	2013	2014	2015	2016	2017	2018	2019	2020	2021
Very positive	11	10	11	11	11	10	11	16	12	19
Fairly positive	21	20	19	17	18	16	19	21	19	19
Neither positive or negative	22	19	23	22	20	20	20	18	21	19
Fairly negative	19	21	20	18	19	21	19	18	19	16
Very negative	18	19	16	19	20	21	19	16	17	14
No opinion/no answer	9	11	11	13	12	12	12	11	12	13
Sum percent	100	100	100	100	100	100	100	100	100	100
Number of respondents	1 524	1 644	1 709	1 739	1 650	1 827	1 797	1 730	1 871	1 610
Positive	32	30	30	28	29	26	30	37	31	38
Negative	37	40	36	37	39	42	38	34	36	30
Difference positive minus negative	-5	-10	-6	-9	-10	-16	-8	+3	-5	+8

# Percent Swedes in Favour of Phasing Out Nuclear Power 1986–2021





**Data:** The SOM Institute, University of Gothenburg; Annual nationwide surveys in Sweden.

**Comment:** All respondents are included in the percent calculations. For question wording, see the Appendix. Changes in question wording have been done in 1987 (in question A; in 1986 the question did not have an explicit don't know alternative), in 1996-98 from question A to B, in 2000 from question B to C, in 2005 from question C to D, in 2010-11 from question D to E, and in 2020 from question E to F. See Appendix.

**Principal investigator:** Sören Holmberg, phone +4631 786 1227, e-mail [soren.holmberg@pol.gu.se](mailto:soren.holmberg@pol.gu.se). Data processed by Erik Jönsson.

## Percent in Favour of Phasing Out Nuclear Power among Swedes in Different Age Groups (Figure 4)

	16–29	30–49	50–64	65–85
1986	77	75	75	72
1987	72	72	70	68
1988	68	69	59	66
1989	66	66	58	64
1990	58	57	57	54
1991	52	62	58	53
1992	63	66	65	62
1993	63	66	61	66
1994	65	65	56	56
1995	68	69	62	51
1996	60	58	56	58
1997	58	58	54	50
1998	56	56	61	56
1999	50	51	50	48
2000	46	46	43	39
2001	42	46	38	39
2002	39	40	39	36
2003	37	33	36	30
2004	42	34	36	33
2005	34	35	33	29
2006	41	34	32	28
2007	35	33	31	25
2008	34	34	32	23
2009	36	34	32	22
2010	46	41	39	34
2011	52	45	45	38
2012	50	50	48	46
2013	45	49	54	51
2014	44	47	55	49
2015	44	51	53	50
2016	46	50	48	53
2017	60	57	58	61
2018	51	51	55	52
2019	38	43	46	45
2020	40	47	51	52
2021	36	41	45	44



## Percent in Favour of Phasing Out Nuclear Power among Swedes in Different Educational Groups (Figure 5)

	University	Middle	Basic
1986	76	75	76
1987			
1988	73	66	64
1989	65	65	63
1990	62	57	55
1991	64	55	57
1992	65	64	65
1993	65	63	64
1994	65	61	56
1995	70	65	59
1996	63	57	57
1997	61	57	51
1998	60	55	60
1999	55	48	48
2000	46	46	40
2001	46	38	42
2002	44	37	37
2003	38	32	34
2004	39	34	37
2005	38	31	32
2006	42	30	29
2007	37	28	30
2008	38	29	26
2009	37	30	25
2010	44	38	38
2011	49	43	38
2012	55	46	42
2013	58	47	46
2014	58	43	46
2015	59	47	44
2016	57	52	44
2017	68	56	
2018	59	49	45
2019	50	43	35
2020	57	44	43
2021	49	41	35

## Percent in Favour of Phasing Out Nuclear Power among Swedes with Different Ideological Self-Placements (Figure 6)

	Left	Middle	Right
1986	78	77	71
1987	77	72	65
1988	76	65	59
1989	75	67	54
1990	69	59	49
1991	65	59	51
1992	71	65	56
1993	73	66	54
1994	70	59	53
1995	75	62	56
1996	69	59	50
1997	67	58	46
1998	70	52	50
1999	63	47	42
2000	58	43	34
2001	51	45	30
2002	49	39	29
2003	46	33	25
2004	48	35	26
2005	44	35	23
2006	45	32	24
2007	42	31	22
2008	44	30	20
2009	45	30	20
2010	61	36	26
2011	60	40	36
2012	65	49	33
2013	66	49	41
2014	67	45	36
2015	72	45	40
2016	73	49	40
2017	76	56	50
2018	72	47	40
2019	64	43	31
2020	66	48	36
2021	65	40	25

## Percent in Favour of Phasing Out Nuclear Power among Swedes with Different Party Sympathies (Figure 7)

	Green Party	Left Party	Centre Party	Social Democrats	Liberals	Christian Democrats	Moderate Party	Sweden Democrats
1986	83	84	88	78	78	72	63	
1987	83	73	88	73	73	89	50	
1988	83	84	78	67	64	84	51	
1989	85	75	82	69	67	67	45	
1990	74	72	75	59	59	62	44	
1991	92	75	78	59	67	67	40	
1992	94	84	87	66	70	76	52	
1993	89	84	86	67	70	66	49	
1994	85	76	75	63	64	67	47	
1995	80	78	69	65	60	69	50	
1996	78	61	78	65	61	66	44	
1997	80	69	68	58	64	66	43	
1998	80	64	73	60	62	56	43	
1999	80	65	61	50	59	50	36	
2000	66	62	69	44	40	40	30	
2001	64	60	54	42	49	42	26	
2002	68	60	60	40	31	40	20	
2003	59	49	47	35	26	38	21	
2004	66	62	51	35	31	38	18	
2005	69	44	51	35	28	35	21	
2006	67	59	48	34	28	33	18	11
2007	66	55	42	30	21	28	18	18
2008	62	56	48	33	19	29	16	22
2009	64	60	45	30	23	28	16	18
2010	73	65	50	47	28	40	24	22
2011	78	68	62	47	32	41	32	30
2012	76	84	62	54	47	54	29	34
2013	78	80	67	58	44	52	35	36
2014	81	72	56	53	38	47	31	34
2015	78	74	61	58	45	38	42	29
2016	84	76	66	59	37	42	41	34
2017	78	80	69	67	56	58	52	35
2018	82	80	69	60	51	48	33	28
2019	76	67	61	52	54	29	28	27
2020	68	80	67	56	51	38	37	27
2021	77	73	57	50	29	17	28	21

## Percent Swedes Who Think Sweden – More than Today – Should Go For Different Energy Sources (Figure 8)

	Hydro	Wind	Solar	Nuclear	Bio	Gas	Coal	Oil	Wave
1999	41	74	77	9			1	2	
2000	39	72	77	11	44	30	2	2	
2001	40	72	75	10	46	31	2	2	
2002	44	68	77	12	45	32	2	2	
2003	44	64	75	16	44	30	2	2	
2004	47	73	79	14	45	30	2	2	
2005	47	72	78	18	54	33	3	2	
2006	48	77	83	17	57	29	2	2	52
2007	49	79		17	55			2	53
2008	47	80		19	39				57
2009	47	74	83	16	43	20	2	1	59
2010	45	66	81	19	46			2	58
2011	46	70		13	48	22	2		60
2012	43	66	81	14	42	20		2	59
2013	41	61	81	13	43		2		58
2014	42	59	79	13	41	19			56
2015	40	58	80	13	37		2		50
2016	44	61	81	13			1		
2017	43	61		12		13		1	52
2018	43	64	83	15	41	15	1	1	48
2019	42	65	82	21	39	13	1	1	48
2020	41	58	80	17	35	11	1	1	46
2021	40	58	79	27	32	11	1	2	50