

Swedish Opinion on Wind Power 1999–2021

Research project:
**SWEDISH OPINIONS ON ENVIRONMENT,
ENERGY AND CLIMATE CHANGE (EECC)**
Financed by the Swedish Energy Agency

Erik Jönsson
June 2022

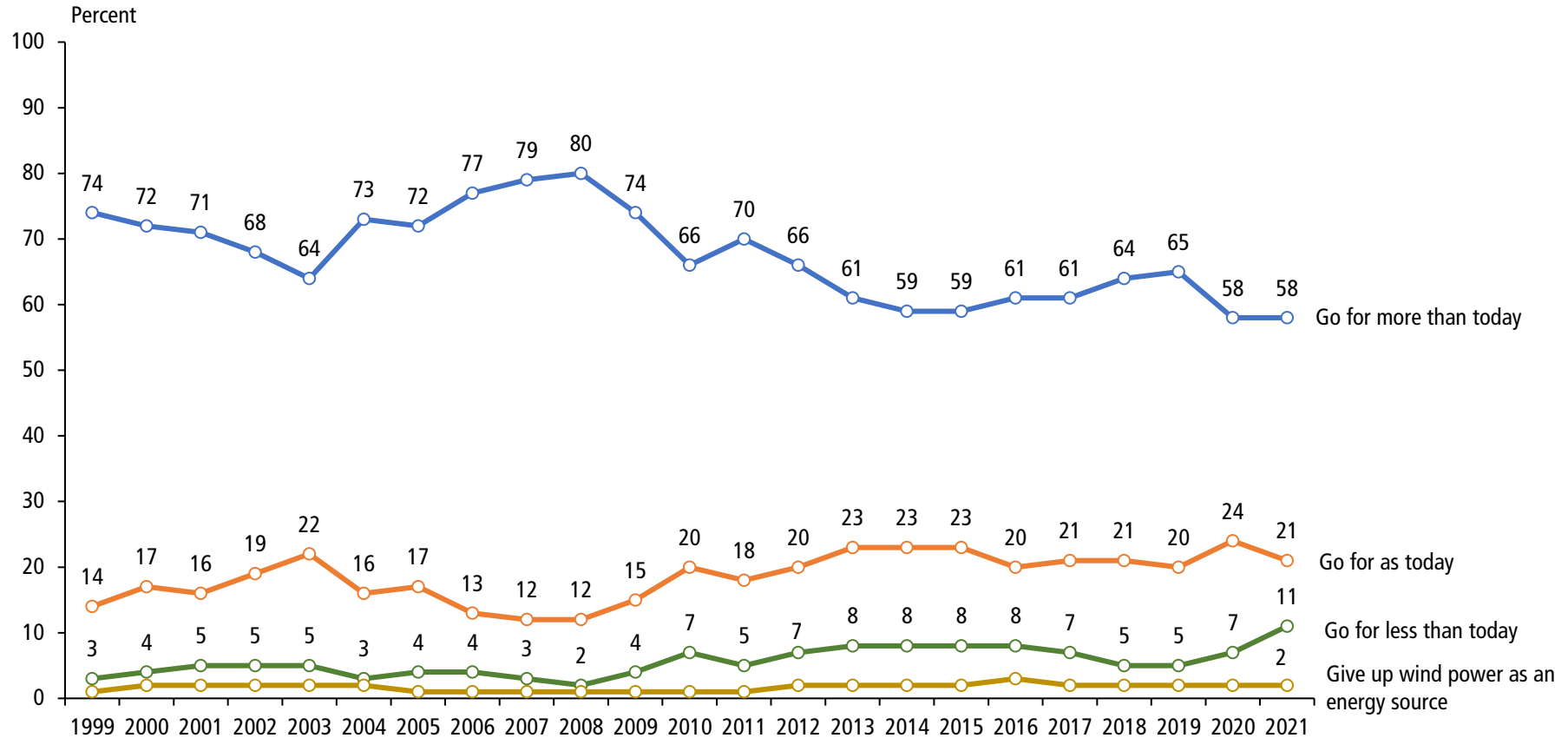


SOM-INSTITUTET
SAMHÄLLE OPINION MEDIER



GÖTEBORGS UNIVERSITET

Figure 1 **Percent in Favour of Go for More or Less Wind Power than Today Among all Swedes**



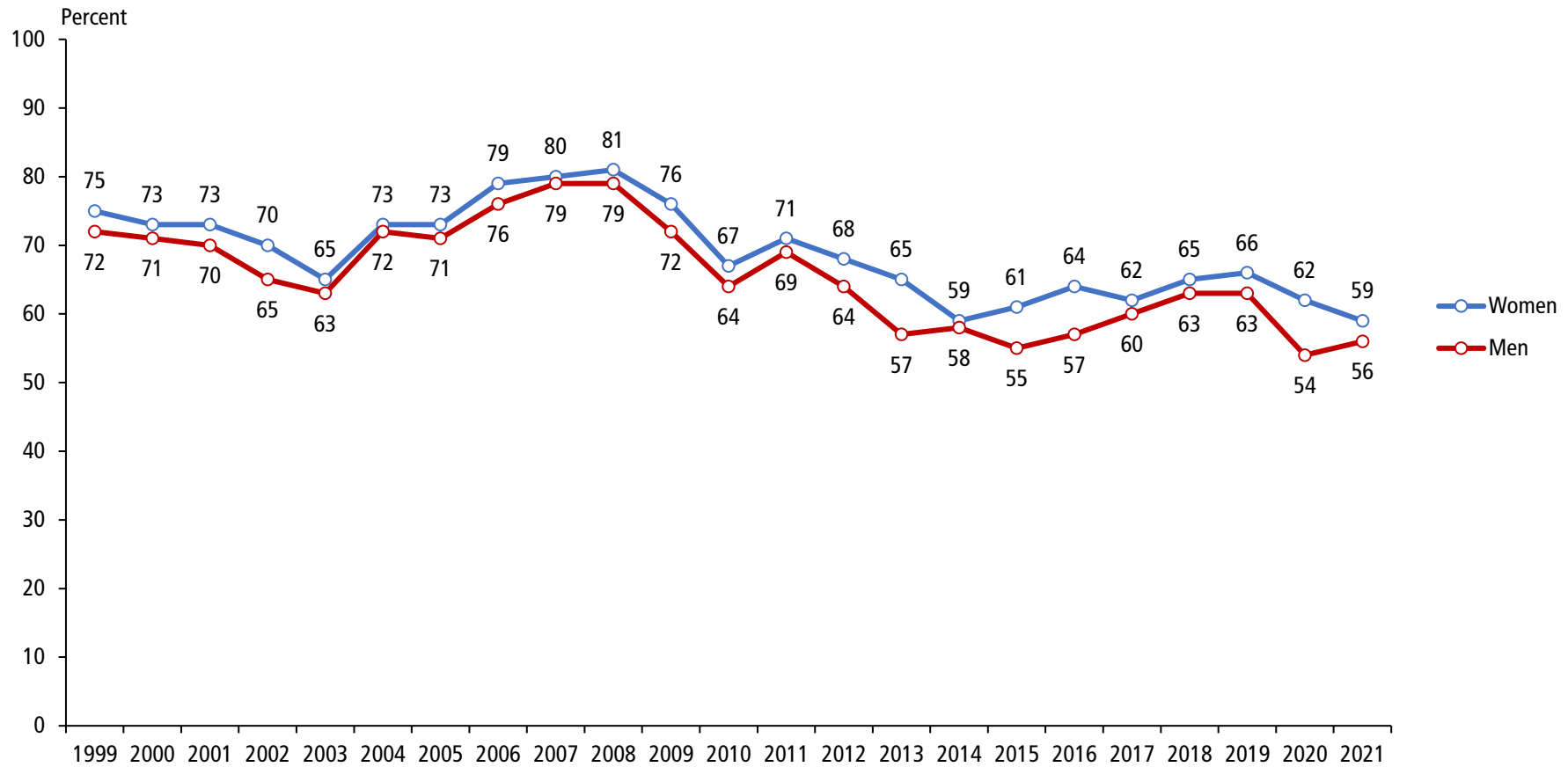
Question: ‘During the upcoming 5–10 years, how much should we go for wind power?’ Five response alternatives: ‘go for more than today’, ‘go for as today’, ‘go for less than today’, ‘give up wind power as an energy source’ and ‘no opinion’.

Comment: The response alternative ‘no opinion’ is not reported in the figure. The ‘no opinion’ response alternative varies between 5–9 percent over the years (2021, 8 percent). Percent calculations does not include respondents who, either fully or partially, skipped the question.

Data: The National SOM Survey 1999–2021, The SOM Institute, University of Gothenburg.

Principal investigator: Erik Jönsson, e-mail: erik.jonsson@gu.se

Figure 2 **Percent in Favour of Go For More Wind Power than Today
Among Swedish Women and Men**

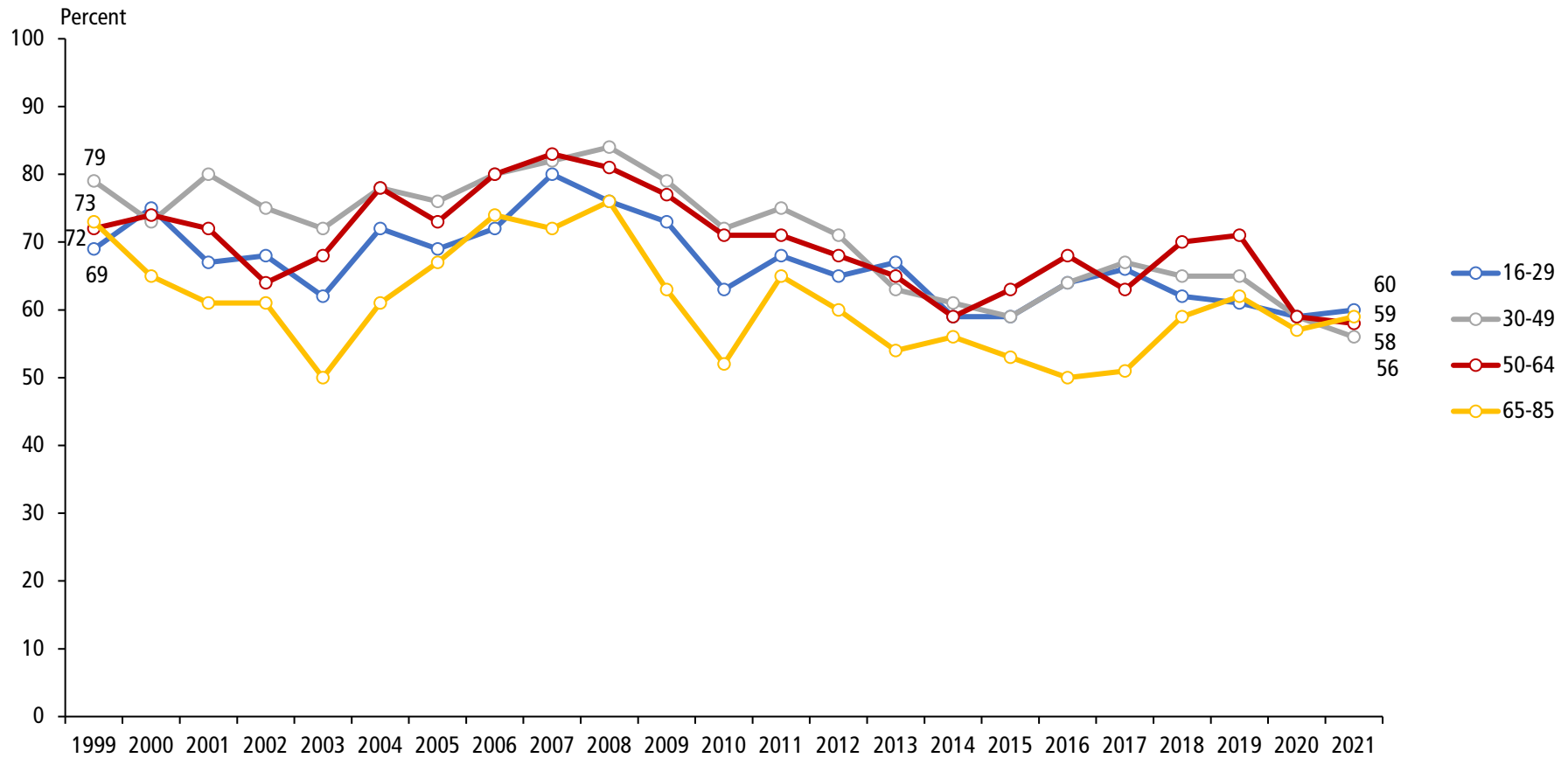


Comment: Percent calculations does not include respondents who, either fully or partially, skipped the question.

Data: The National SOM Survey 1999–2021, The SOM Institute, University of Gothenburg.

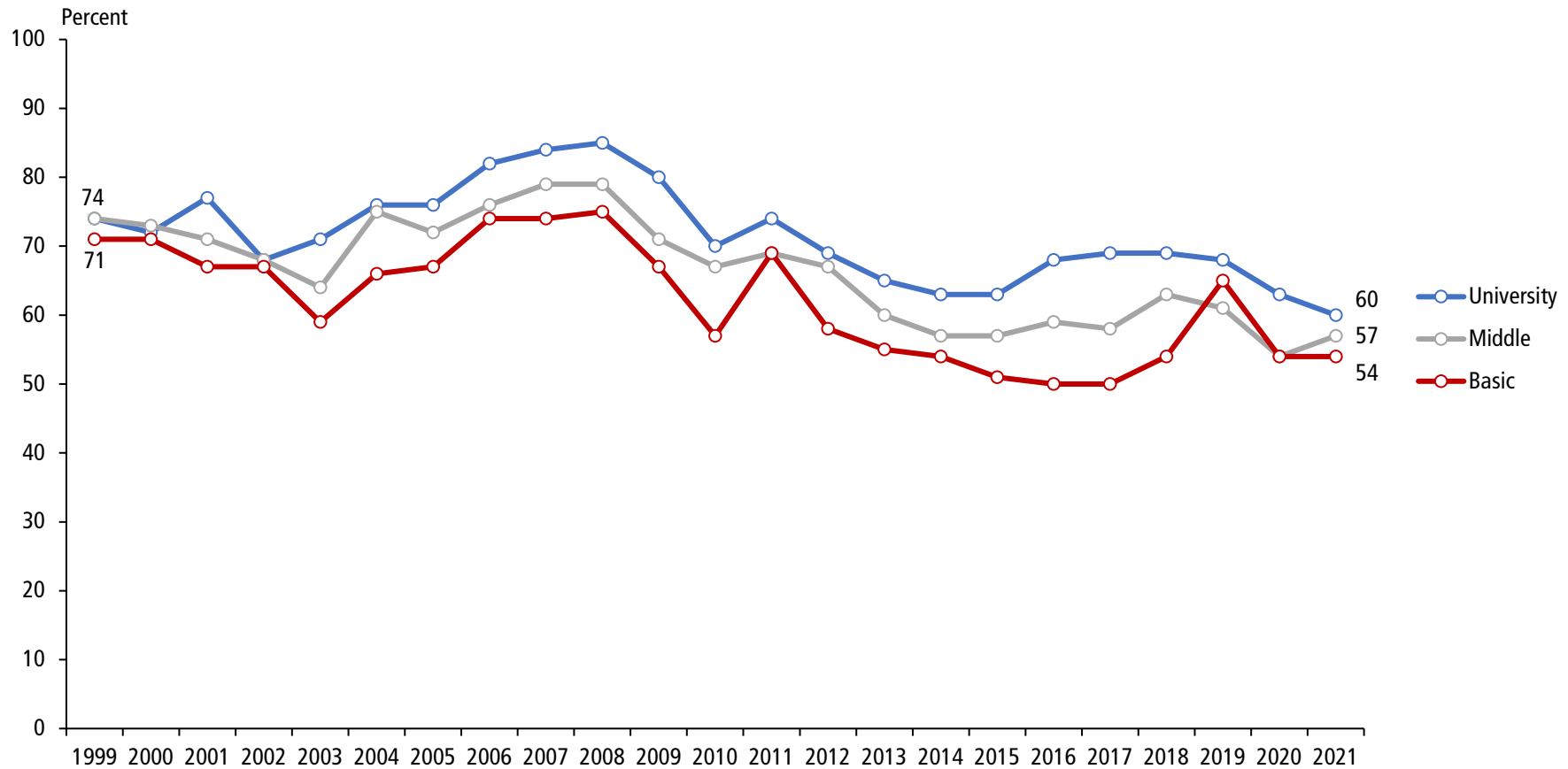
Principal investigator: Erik Jönsson, e-mail: erik.jonsson@gu.se

Figure 3 **Percent in Favour of Go For More Wind Power than Today
Among Swedes in Different Age Groups**



Comment: Percent calculations does not include respondents who, either fully or partially, skipped the question.
Data: The National SOM Survey 1999–2021, The SOM Institute, University of Gothenburg.
Principal investigator: Erik Jönsson, e-mail: erik.jonsson@gu.se

Figure 4 **Percent in Favour of Go For More Wind Power than Today Among Swedes in Different Educational Groups**

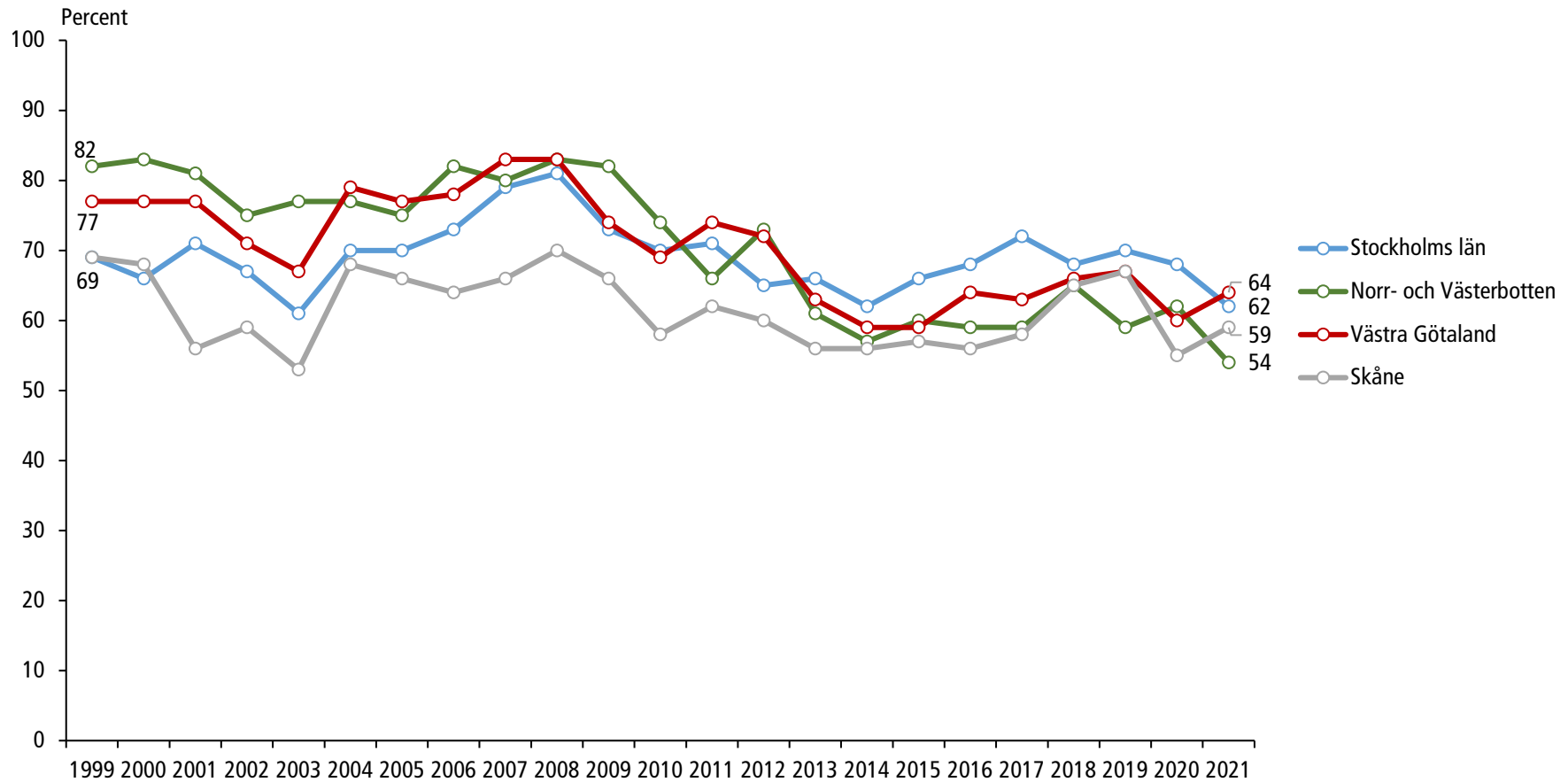


Comment: Percent calculations does not include respondents who, either fully or partially, skipped the question.

Data: The National SOM Survey 1999–2021, The SOM Institute, University of Gothenburg.

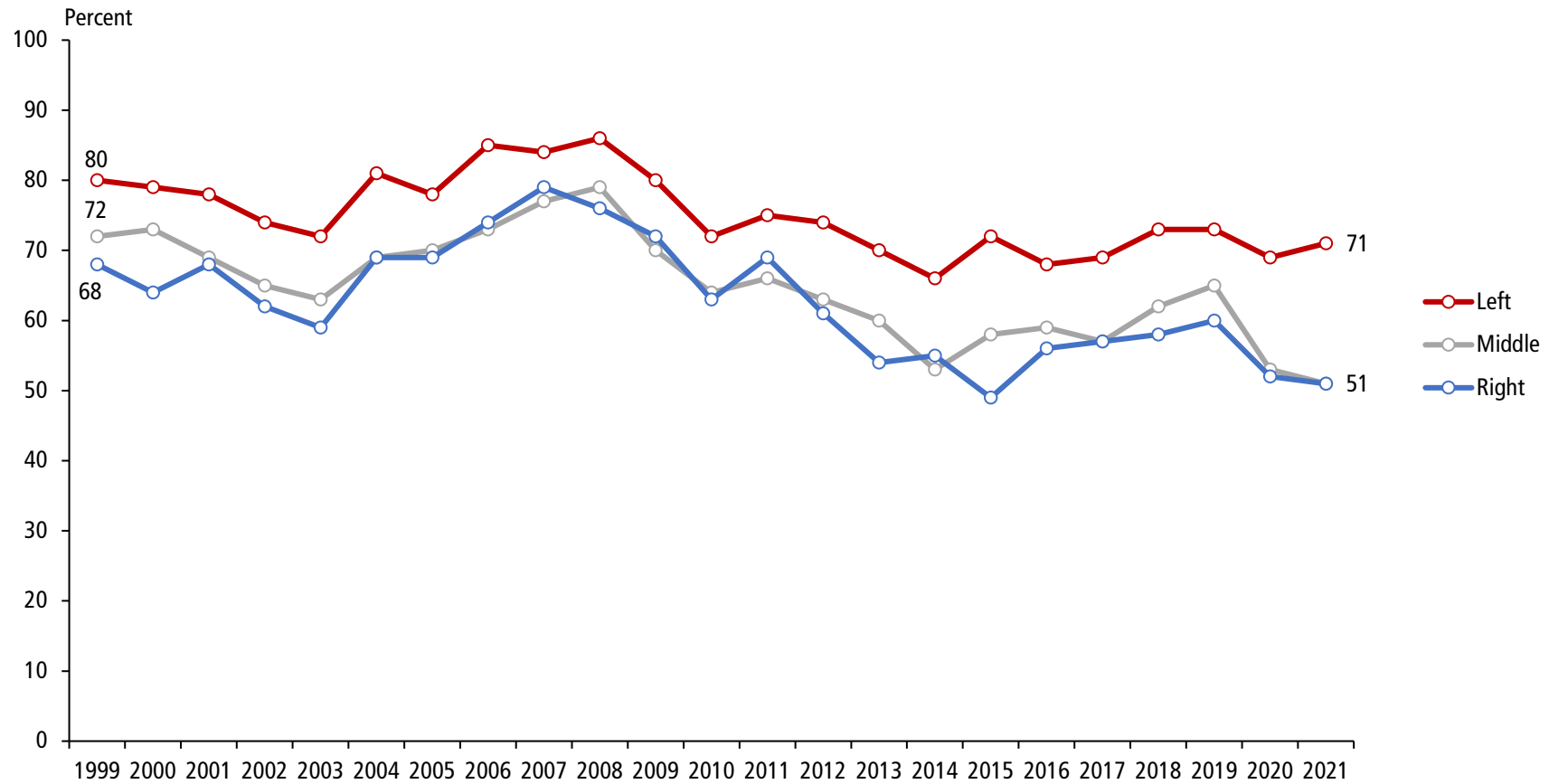
Principal investigator: Erik Jönsson, e-mail: erik.jonsson@gu.se

Figure 5 **Percent in Favour of Go For More Wind Power than Today Among Swedes in Different Regional Parts of Sweden**



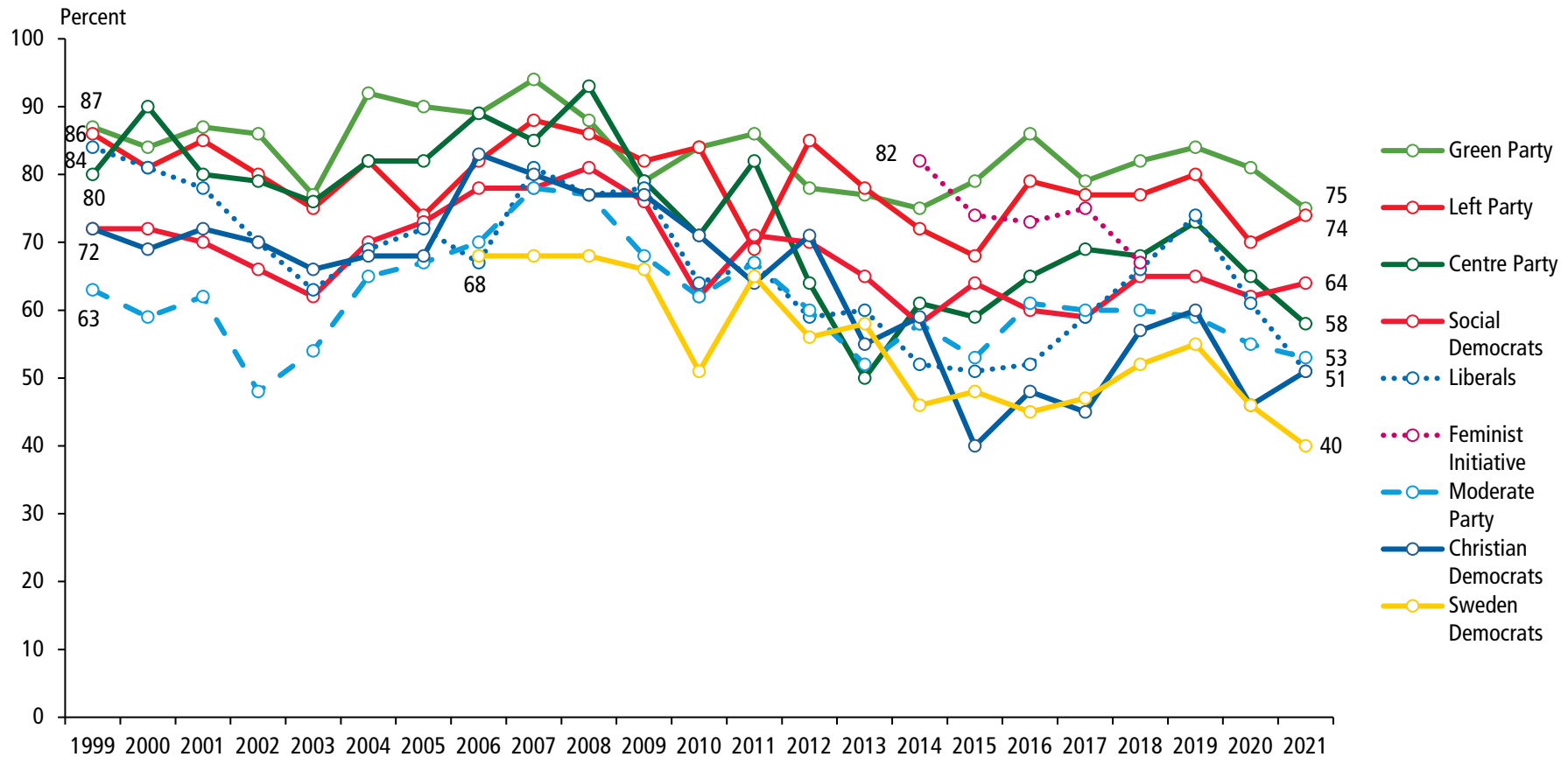
Comment: Percent calculations does not include respondents who, either fully or partially, skipped the question.
Data: The National SOM Survey 1999–2021, The SOM Institute, University of Gothenburg.
Principal investigator: Erik Jönsson, e-mail: erik.jonsson@gu.se

Figure 6 **Percent in Favour of Go For More Wind Power than Today
Among Swedes with Different Ideological Self-Placements**



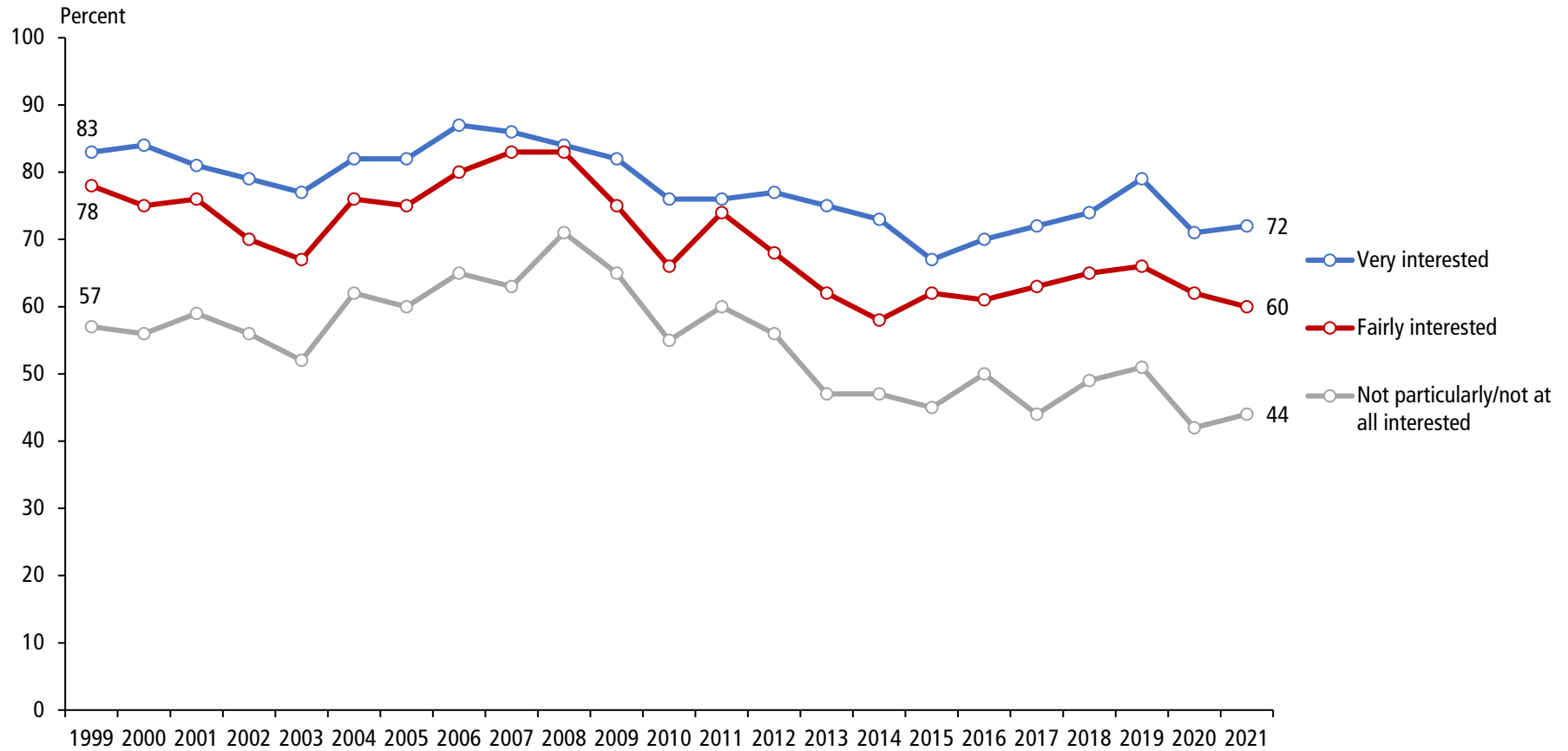
Comment: Percent calculations does not include respondents who, either fully or partially, skipped the question.
Data: The National SOM Survey 1999–2021, The SOM Institute, University of Gothenburg.
Principal investigator: Erik Jönsson, e-mail: erik.jonsson@gu.se

Figure 7 **Percent in Favour of Go For More Wind Power than Today
Among Swedes with Different Party Sympathies**



Comment: Percent calculations does not include respondents who, either fully or partially, skipped the question.
Data: The National SOM Survey 1999–2021, The SOM Institute, University of Gothenburg.
Principal investigator: Erik Jönsson, e-mail: erik.jonsson@gu.se

Figure 8 **Percent in Favour of Go For More Wind Power than Today
Among Swedes with Different Interest in Environmental Issues**

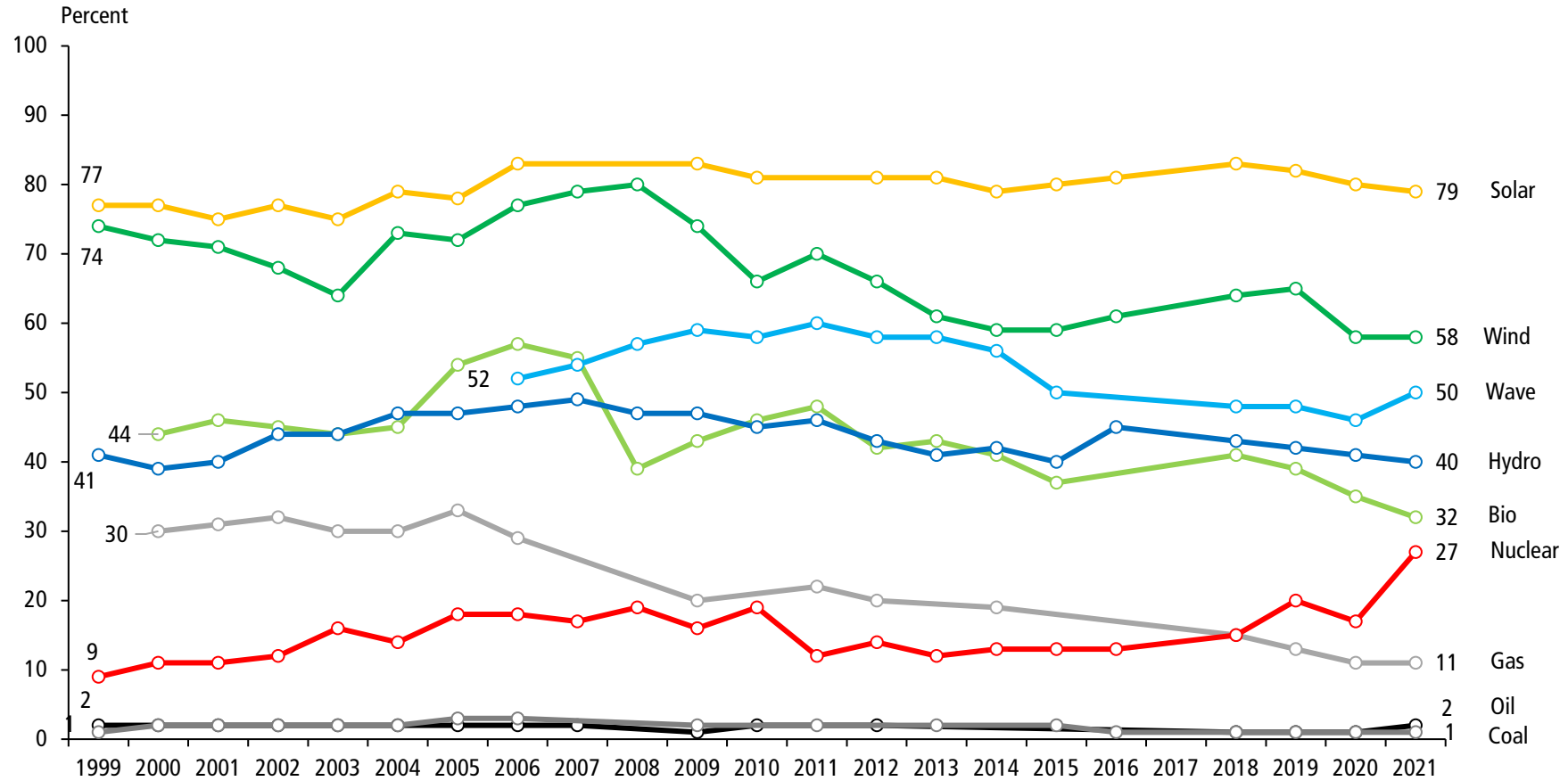


Comment: Percent calculations does not include respondents who, either fully or partially, skipped the question.

Data: The National SOM Survey 1999–2021, The SOM Institute, University of Gothenburg.

Principal investigator: Erik Jönsson, e-mail: erik.jonsson@gu.se

Figure 9 **Percent Swedes Who Think Sweden – More than Today – Should Go For Different Energy Sources**



Comment: Percent calculations does not include respondents who, either fully or partially, skipped the question.

Data: The National SOM Survey 1999–2021, The SOM Institute, University of Gothenburg.

Principal investigator: Erik Jönsson, e-mail: erik.jonsson@gu.se

Table 1**Percent in Favour of Go For More Wind Power than Today
Among Swedes in Different Age Groups (Figure 3)**

	16–29	30–49	50–64	65–85
1999	69	79	72	73
2000	75	73	74	65
2001	67	80	72	61
2002	68	75	64	61
2003	62	72	68	50
2004	72	78	78	61
2005	69	76	73	67
2006	72	80	80	74
2007	80	82	83	72
2008	76	84	81	76
2009	73	79	77	63
2010	63	72	71	52
2011	68	75	71	65
2012	65	71	68	60
2013	67	63	65	54
2014	59	61	59	56
2015	59	59	63	53
2016	64	64	68	50
2017	66	67	63	51
2018	62	65	70	59
2019	61	65	71	62
2020	59	59	59	57
2021	60	56	58	59

Table 2**Percent in Favour of Go For More Wind Power than Today
Among Swedes in Different Educational Groups (Figure 4)**

	University	Basic	Middle
1999	74	71	74
2000	72	71	73
2001	77	67	71
2002	68	67	68
2003	71	59	64
2004	76	66	75
2005	76	67	72
2006	82	74	76
2007	84	74	79
2008	85	75	79
2009	80	67	71
2010	70	57	67
2011	74	69	69
2012	69	58	67
2013	65	55	60
2014	63	54	57
2015	63	51	57
2016	68	50	59
2017	69	50	58
2018	69	54	63
2019	68	65	61
2020	63	54	54
2021	60	54	57

Table 3**Percent in Favour of Go For More Wind Power than Today
Among Swedes in Different Regional Parts of Sweden (Figure
5)**

	Stockholms län	Västra Götaland	Skåne	Norr- och Västerbotten
1999	69	77	69	82
2000	66	77	68	83
2001	71	77	56	81
2002	67	71	59	75
2003	61	67	53	77
2004	70	79	68	77
2005	70	77	66	75
2006	73	78	64	82
2007	79	83	66	80
2008	81	83	70	83
2009	73	74	66	82
2010	70	69	58	74
2011	71	74	62	66
2012	65	72	60	73
2013	66	63	56	61
2014	62	59	56	57
2015	66	59	57	60
2016	68	64	56	59
2017	72	63	58	59
2018	68	66	65	65
2019	70	67	67	59
2020	68	60	55	62
2021	62	64	59	54

Table 4 **Percent in Favour of Go For More Wind Power than Today
Among Swedes with Different Ideological Self-Placements
(Figure 6)**

	Left	Middle	Right
1999	80	72	68
2000	79	73	64
2001	78	69	68
2002	74	65	62
2003	72	63	59
2004	81	69	69
2005	78	70	69
2006	85	73	74
2007	84	77	79
2008	86	79	76
2009	80	70	72
2010	72	64	63
2011	75	66	69
2012	74	63	61
2013	70	60	54
2014	66	53	55
2015	72	58	49
2016	68	59	56
2017	69	57	57
2018	73	62	58
2019	73	65	60
2020	69	53	52
2021	71	51	51

Table 5 **Percent in Favour of Go For More Wind Power than Today
Among Swedes with Different Party Sympathies (Figure 7)**

	Green Party	Left Party	Liberals	Centre Party	Social Democrats	Feminist Initiative	Christian Democrats	Moderate Party	Sweden Democrats
1999	87	86	84	80	72	–	72	63	–
2000	84	81	81	90	72	–	69	59	–
2001	87	85	78	80	70	–	72	62	–
2002	86	80	70	79	66	–	70	48	–
2003	77	75	63	76	62	–	66	54	–
2004	92	82	69	82	70	–	68	65	–
2005	90	74	72	82	73	–	68	67	–
2006	89	82	67	89	78	–	83	70	68
2007	94	88	81	85	78	–	80	78	68
2008	88	86	77	93	81	–	77	77	68
2009	79	82	78	79	76	–	77	68	66
2010	84	84	64	71	62	–	71	62	51
2011	86	69	67	82	71	–	64	67	65
2012	78	85	59	64	70	–	71	60	56
2013	77	78	60	50	65	–	55	52	58
2014	75	72	52	61	58	82	59	58	46
2015	79	68	51	59	64	74	40	53	48
2016	86	79	52	65	60	73	48	61	45
2017	79	77	59	69	59	75	45	60	47
2018	82	77	66	68	65	67	57	60	52
2019	84	80	74	73	65	–	60	59	55
2020	81	70	61	65	62	–	46	55	46
2021	75	74	51	58	64	–	51	53	40

Table 6 **Percent in Favour of Go For More Wind Power than Today
Among Swedes with Different Interest in Environmental Issues
(Figure 8)**

	Very interested	Fairly interested	Not particularly/not at all interested
1999	83	78	57
2000	84	75	56
2001	81	76	59
2002	79	70	56
2003	77	67	52
2004	82	76	62
2005	82	75	60
2006	87	80	65
2007	86	83	63
2008	84	83	71
2009	82	75	65
2010	76	66	55
2011	76	74	60
2012	77	68	56
2013	75	62	47
2014	73	58	47
2015	67	62	45
2016	70	61	50
2017	72	63	44
2018	74	65	49
2019	79	66	51
2020	71	62	42
2021	72	60	44

Table 7 **Percent Swedes Who Think Sweden – More than Today – Should Go For Different Energy Sources (Figure 9)**

	Solar	Wind	Bio	Hydro	Gas	Nuclear	Oil	Coal	Wave
1999	77	74	–	41	–	9	2	1	–
2000	77	72	44	39	30	11	2	2	–
2001	75	71	46	40	31	11	2	2	–
2002	77	68	45	44	32	12	2	2	–
2003	75	64	44	44	30	16	2	2	–
2004	79	73	45	47	30	14	2	2	–
2005	78	72	54	47	33	18	2	3	–
2006	83	77	57	48	29	18	2	3	52
2007	–	79	55	49	–	17	2		54
2008	–	80	39	47	–	19	–		57
2009	83	74	43	47	20	16	1	2	59
2010	81	66	46	45	–	19	2		58
2011	–	70	48	46	22	12	–	2	60
2012	81	66	42	43	20	14	2		58
2013	81	61	43	41	–	12	–	2	58
2014	79	59	41	42	19	13	–		56
2015	80	59	37	40	–	13	–	2	50
2016	81	61	–	45	–	13	–	1	–
2017	–	–	–	–	–	–	–	–	–
2018	83	64	41	43	15	15	1	1	48
2019	82	65	39	42	13	20	1	1	48
2020	80	58	35	41	11	17	1	1	46
2021	79	58	32	40	11	27	2	1	50